

# **RUBLE CATTLE SERVICES**

## *Spring Turnout*

**SATURDAY, MAY 25, 2024 • BLOOMFIELD, IA**

**1:00 PM CST • BLOOMFIELD LIVESTOCK MARKET**

**300 HEAD OF SIMMENTAL, SIMANGUS, ANGUS & RED ANGUS CATTLE**

**150 HEAD FROM THE MCLAIN LINK CATTLE CO. HERD DISPERSAL**

**SPRING COW-CALF PAIRS, FALL BRED COWS, OPEN HEIFERS,  
COMMERCIAL FEMALES, BULLS & FROZEN GENETICS**



# INVESTED IN YOUR SUCCESS!

Spring is upon us and boy do we have a lot to be thankful for. After a drought in our area, we've been blessed with much needed rain, sunshine and plentiful green grass. The cattle market is continuing to see record highs and cattle will be worth even more this fall. The RCS Spring Turnout is the best set of cattle in volume we have ever had the privilege of marketing. The sale features the McLain Link Cattle Co. Dispersal Sale. Gene McLain has been one of Missouri's best kept secrets. I received a call from Mr. McLain while out looking at new sire groups. He talked about having a dispersal sale, so I made the trek down to his ranch. I was absolutely blown away with the quality from top to bottom. What impressed me the most was the quality and the fact that the cattle have been bred under low inputs with fescue-based pasture. Mr. McLain quietly put together one of the nicest cow herds in the Midwest, which has mainly been bred from groups of purchased bred heifers many years ago. You can start with the spring cow calf pairs. They have purposely been kept open so you can flush, ai, breed or put a high dollar embryo in them. The choice will be yours. The bred females are super nice and will calve in a short period this fall. The open heifers are the best of the best. The average heifers were sent earlier to the sale barn. The bulls and bull calves are top quality too. You need to come see them the week of the sale in Bloomfield and you'll be glad you did. Let's not take anything away from the other consigners. We have females and bulls from multiple breeds and in every stage of production. We also have one exceptional flush and semen that I would recommend from some of my best customers who have invested in genetics I love and also use personally. This sale will be an event for everyone and the quality is hard produce. Come to Bloomfield and join us for a free lunch, fellowship and a damn good set of cattle and genetics! I will do my best to accurately describe the cattle and represent you if you are unable to make the sale. I consider myself fortunate to be able to manage a sale with a combination of dispersal cattle and other consigners with such beautiful animals. If you can I would recommend making plans to attend the sale.

Sincerely, Jeremie Ruble



Jeremie Ruble & Family



406-581-7940 (cell)  
515-850-8741  
rublecattleservices@gmail.com  
www.rublecattleservices.com

## CONSIGNORS

### 4E Angus

Shawn Echelberry, 515-975-7315  
20505 305th St., Hedrick, IA 52563  
sechelberry@yourcountybank.com

### B3 Ranch LLC

Lucas Burns, 660-349-8576  
b3ranchllc@gmail.com  
20694 Island Drive, Brookfield, MO 64628

### Bracker Livestock

Matt Bracker, 402-510-5285  
BrackerLivestock@gmail.com  
Cade Bracker, 712-310-1082  
21239 Juniper Rd, Underwood, IA 51576

### Hidden Pines Cattle

Gerald Nolt, 573-539-2175  
riversidecont@ibygax.com  
10994 HWY 5, Versailles, IA 65084

### Jared Werning Cattle

Jared Werning, 605-933-1661  
jared.werning@gmail.com  
Kassi Rice, 319-939-7476  
26920 413th AVE, Ethan, SD 57334

### Krosch Cattle Company

Scott Krosch, 712-870-3298  
scottkrosch@yahoo.com  
1056 Jewell Ave, Kingsley IA 51028

### McLain Link Cattle Co.

Gene and Janet McLain  
Gene McLain, 660-214-0459  
Jennifer McLain Link, 660-752-5303  
21159 Clark Drive, Meadville, MO 64659

### River Creek Farms

Abram Mertz, 785-456-3986  
accounting@rivercreekfarms.com  
1331 Poyntz Ave, Manhattan, KS 66502

### Ruble Cattle Services

Jeremie Ruble, 406-581-7940  
rublecattleservices@gmail.com  
1525 140th St., Corydon, IA 50050

### Terry Oliver

Terry, 918-721-2515  
fulghamroper@yahoo.com  
422 Oliver Lane, Quinton, OK 25166

### Tyler Haerr/Haerr Farms

Tyler Haerr, 217-257-4639  
haerrfarms@gmail.com  
220 CR 313, Taylor, MO 63471

# RUBLE CATTLE SERVICES

# Spring Turnout

**SATURDAY, MAY 25, 2024 • BLOOMFIELD, IA**  
1:00 PM CST • BLOOMFIELD LIVESTOCK MARKET

## SALE MANAGER

Ruble Cattle Services  
Jeremie Ruble  
406-581-7940 / 515-231-3831  
1525 140th St. Corydon, IA 50060  
rublecattleservices@gmail.com

## SALE LOCATION

Bloomfield Livestock Market  
510 Weaver Road  
Bloomfield, IA 52537

## ACCOMMODATIONS

Southfork Motel & Grill  
907 S. Washington Street  
Bloomfield, IA 52537  
Rooms Blocked by RCS

## INSPECTION OF CATTLE

Cattle may be viewed at the sale site beginning at 12:00 PM on Friday, April May 24th. Prior to Friday cattle may be viewed at their respective farms. Dispersal cattle from McLain Link Cattle Co. will be tagged and on site by mid-afternoon on Tuesday in larger groups.

## HEALTH

Interstate health papers will be furnished on all cattle selling.

## TERMS & CONDITIONS

All cattle will sell under the suggested sale terms and conditions of the American Simmental Association.

## TRUCKING

Dick Coleman / 765-461-0954  
Brian Wyatt / 423-240-5533  
John Jarrett / 918-429-5596  
Kevin Foster / 208-760-9695  
Truckers believed reliable will be available to assist you in shipping your purchases.

## INSURANCE

Jamie Secondino, American Livestock Insurance  
812-208-0956

## SALE WEEKEND SCHEDULE

### Friday, May 24, 2024

1:00 pm - Dusk . . . . . Sale Cattle on Display

### Saturday, May 25, 2024

9:00 am . . . . . Sale Cattle on Display

11:30 am - 1:00 pm . . . . . Lunch served by Cattlemen's Association

1:00 pm . . . . . Spring Turnout Sale

5:00 pm . . . . . After Sale Party, Located at 25236 190th St., Bloomfield, IA 52537

## SALE DAY PHONES & STAFF

Jeremie Ruble, *Ruble Cattle Services* . . . . . 406-581-7940  
Jeremie Ruble, *Ruble Cattle Services* . . . . . 515-850-8741  
Marshall Ruble, *Ruble Cattle Services* . . . . . 515-231-3198  
Bill Schermer, *The Stockman* . . . . . 641-425-2641  
Tom Rooney, *Midwest Marketer* . . . . . 515-491-6025  
Austin Brandt, *Midwest Marketer* . . . . . 712-621-1829  
Chris Beuler, *Livestock Digital* . . . . . 402-380-8244  
Roman Schooley, *Consultant* . . . . . 515-450-3685  
Cody Lowerderman, *Auctioneer* . . . . . 712-263-0755

## ABSENTEE BIDDING

Bids may be accepted by sale representatives or sale managers. Sale day phone is 406-581-7940

## SALE UPDATES

We have made every attempt to supply the most current and accurate information available on the cattle being offered. Any updated or additional information made available at the sale will take precedence over previously printed material.

## SALE ORDER

A supplement sheet and sale order will be available sale day.

## LIABILITY

All persons who attend the sale do so at their own risk and neither owners, Ruble Cattle Services or Bloomfield Livestock Auction assumes any responsibility, legal or otherwise, for damages, accidents, theft, errors in the catalog or omissions. All cattle are at the purchaser's risk as soon as sold. Assistance will be offered in loading and/or shipment of cattle, but no risk is assumed by any group of individual associated with the sale.

## ONLINE BIDDING

DVAuction, *Tech Support* . . . . . 402-316-5460





MCLAIN LINK CATTLE CO. DISPERSAL  
SPRING COW-CALF PAIRS



LOTS 1 AND 1A



MCLC TRUSTEE 49G KIMBER 39K  
SIRE OF LOT 2A



LOT 2

1

MCLAIN LINK CATTLE CO.

**MCLC TIMBER GLAMOUR 44G**

BD: 3/6/19 / ASA#: 3580816 / Tattoo: 44G / 3/4 SM 1/4 AN  
Spring Cow-Calf Pair / Black / Polled

HOOK `S YELLOWSTONE 97Y  
KOCH BIG TIMBER 685D  
KOCH MS HOOKS BOY



W/C PALEFACE 756X  
MCLC MS PALE FACE 89D  
MCLC CLINE 312

CE	BW	WW	YW	MCE	Milk	MWW	Stay	Marb	BF	REA	API	TI
13.0	-1.0	72.8	111.7	7.4	20.3	56.6	14.5	0.30	-0.025	0.48	129.5	77.4

1A: Heifer Calf / ASA#: 4348608 / DOB: 3/9/24 / Tattoo: 11M  
Sired by OMF Epic E27 (ASA#: 3317371)

Sells open and ready to breed.

MCLC TIMBER GLAMOUR 44G is a beautiful blaze face daughter of KOCH BIG TIMBER 685D. She is eye catching and good from every angle. She was chosen as the lead off cow of the dispersal sale because shows the quality within this offering. Her star headed heifer calf by OMF Epic E27 will grow up to be another stunner.

2

MCLAIN LINK CATTLE CO.

**MCLC LONGEVITY 138B HEATHER 13H**

BD: 3/2/20 / ASA#: 3701032 / Tattoo: 13H / 3/4 SM 1/4 AN  
Spring Cow-Calf Pair / Black / Homo Polled

ASR/GLS PACESETTER U862  
ASR LONGEVITY Y184  
ASR MISS PRIMROSE M231



ALL/FHG FIRST ASCENT 117Y  
MISS CHARLO 451B  
BAIRDS RIGHT TIME S136

CE	BW	WW	YW	MCE	Milk	MWW	Stay	Marb	BF	REA	API	TI
10.8	0.2	65.8	103.8	6.5	17.1	51.2	18.9	0.11	-0.059	0.77	122.1	67.6

2A: Heifer Calf / ASA#: 4352902 / DOB: 4/24/24 / Tattoo: 57M  
Sired by MCLC Trustee 49G Kimber 39K (ASA#: 4024073)

Sells open and ready to breed.

MCLC LONGEVITY 138B HEATHER is another beautiful blaze face female who is homo polled, angular, super correct and has a wonderful udder. She sells with a heifer calf who will grow up to be another stunner.



# MCLAIN LINK CATTLE CO. DISPERSAL SPRING COW-CALF PAIRS

3

MCLAIN LINK CATTLE CO.

## MCLC BG 25E JACKIE 43J

BD: 4/1/21 / ASA#: 3897165 / Tattoo: 43J / 1/4 SM 5/8 AN 1/8 HH  
Spring Cow-Calf Pair / Hetero Black / Polled

A A R TEN X 7008 SA

CLINES BLACK GOLD 443 TEN X

CLINES PRIDE 243 443 FA



WS ZENITH Z55

MCLC MS ZENITH 25E

MCLC SOCKS 275B



LOT 3

CE	BW	WW	YW	MCE	Milk	MWW	Stay	Marb	BF	REA	API	TI
17.5	-1.2	69.3	115.3	9.5	20.6	54.1	10.4	0.59	0.000	0.29	139.4	81.5

3A: Bull Calf / ASA#: 4348607 / DOB: 2/29/24 / Tattoo: 3M  
Sired by SFI Brigade D21 (ASA#: 3139298)

Sells open and ready to breed.

MCLC BG 25E JACKIE 43J is a hard working cow who exemplifies what a production cow on fescue should be. Check out her stud of a blaze face bull calf sired by SFI Brigade D21. He's a future 3/4 herd sire.

4

MCLAIN LINK CATTLE CO.

## TRPH MS FINALE Z208

BD: 3/1/12 / ASA#: 2661727 / Tattoo: Z208 / 1/2 SM 3/8 AN 3/32 AR 1/32 MX  
Spring Cow-Calf Pair / Black / Polled

S A V FINAL ANSWER 0035

TNT FINALE W241

TNT MISS R77



ELLINGSON LEGACY M229

3C CROCUS X0314 B

U8020



LOT 4

CE	BW	WW	YW	MCE	Milk	MWW	Stay	Marb	BF	REA	API	TI
14.8	-1.3	63.6	98.7	8.4	26.7	58.6	17.7	0.36	-0.026	0.52	139.0	74.8

4A: Bull Calf / ASA#: 4348594 / DOB: 3/13/24 / Tattoo: 14M  
Sired by SFI Brigade D21 (ASA#: 3139298)

Sells open and ready to breed.

TRPH MS FINALE Z208 is what MCLAIN LINK CATTLE CO. is all about. She is still stunning at her age. She has 10 natural progeny recorded to her. Her baldy bull calf sired by SFI Brigade D21. Might be her best. If you want to start a herd that looks and functions well purchase this cow and flush her to make daughters and grow this beautiful bull calf out and keep every daughter.

5

MCLAIN LINK CATTLE CO.

## MCLC TRUSTEE B40 KENDRA 12K

BD: 3/6/22 / ASA#: 4022000 / Tattoo: 12K / 1/2 SM 1/2 AN  
Spring Cow-Calf Pair / Black / Polled

CDI REVIVAL 370D

CDI TRUSTEE 387F

CDI MISS HOMETOWN 163C



S A F CONNECTION

MCLC CONNECTION BEV B40



LOT 5

CE	BW	WW	YW	MCE	Milk	MWW	Stay	Marb	BF	REA	API	TI
13.2	0.1	76.1	118.3	6.1	25.9	64.1	11.0	0.42	-0.034	0.81	129.8	82.3

5A: Bull Calf / ASA#: 4352900 / DOB: 4/23/24 / Tattoo: 55M  
Sired by MCLC Epic 4G Kernel 28K (ASA#: 4021995)

Sells open and ready to breed.

MCLC TRUSTEE B40 KENDRA 12K is a half blood CDI TRUSTEE 387F daughter take a look at her up close udder picture to see her teat quality. This cow herd has maternal bred into them and because they are grown and raised on fescue they will thrive anywhere.

MCLAIN LINK CATTLE CO. DISPERSAL  
 SPRING COW-CALF PAIRS

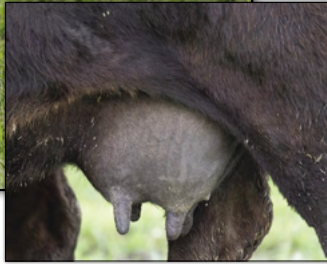


**6** MCLC EPIC 17D KAMERON 13K  
 MCLAIN LINK CATTLE CO.  
 BD: 3/6/22 / ASA#: 4021990 / Tattoo: 13K / PB SM  
 Spring Cow-Calf Pair / Homo Black / Homo Polled  
 WS ALL-AROUND Z35 HOOK`S YELLOWSTONE 97Y  
 OMF EPIC E27 MCLC MS YELLOWSTONE 17D  
 OMF TIME LESS B100 RYMO MS ALUMNI H99B

CE	BW	WW	YW	MCE	Milk	MWW	Stay	Marb	BF	REA	API	TI
13.5	-0.5	82.1	124.1	9.0	22.4	63.4	17.4	0.31	-0.057	0.73	151.4	87.8

6A: Bull Calf / ASA#: 4348598 / DOB: 3/2/24 / Tattoo: 4M  
 Sired by Hooks Blackhawk 50B (ASA#: 2854467)

*Sells open and ready to breed.*  
 MCLC Epic 17D Kameron 13K is a homo black and homo polled daughter of the great OMF EPIC E27 and the first of many to be featured in this dispersal sale. This young hard working female has great data and has a stout solid black future herd sire by HOOK`S BLACK HAWK 50B.



**7** MCLC MS YELLOWSTONE 17D  
 MCLAIN LINK CATTLE CO.  
 BD: 2/8/16 / ASA#: 3099988 / Tattoo: 17D / 3/4 SM 1/4 AN  
 Spring Cow-Calf Pair / Homo Black / Homo Polled  
 HOOKS TAURUS 24T S D S ALUMNI 115X  
 HOOK`S YELLOWSTONE 97Y RYMO MS ALUMNI H99B  
 HOOKS SHEYENNE 77S MISS PRICKLY PEAR 999W

CE	BW	WW	YW	MCE	Milk	MWW	Stay	Marb	BF	REA	API	TI
11.0	1.2	79.3	125.8	7.2	26.1	65.7	16.5	0.40	-0.064	0.75	137.0	82.6

7A: Bull Calf / ASA#: 4348576 / DOB: 1/0/00 / Tattoo: 16M  
 Sired by CCR 707 Cowboy 6055B (ASA#: 2882669)  
*Sells open and ready to breed.*  
 MCLC MS YELLOWSTONE 17D is homo black and homo polled. She is a big stout cow with a picture perfect udder. Her solid black bull calf by CCR 707 COWBOY 6055B is big, stout, big bellied and thick from end to end.



# MCLAIN LINK CATTLE CO. DISPERSAL SPRING COW-CALF PAIRS

8

MCLAIN LINK CATTLE CO.

## MCLC SUBSTANCE GIADA 4G

BD: 2/23/19 / ASA#: 3580884 / Tattoo: 4G / 3/8 SM 5/8 AN  
Spring Cow-Calf Pair / Black / Polled

GW PREMIUM BEEF 021TS

GW-WBF SUBSTANCE 820Y

GW MISS MATERNAL 558P



MCLC 3 509Z BENNETT



CE	BW	WW	YW	MCE	Milk	MWW	Stay	Marb	BF	REA	API	TI
11.8	0.2	69.7	108.6	6.7	26.1	60.8	9.5	0.53	-0.026	0.62	124.2	78.8

8A: Bull Calf / ASA#: 4348589 / DOB: 4/10/24 / Tattoo: 48M

Sired by MG/GCS Authority W14C (ASA#: 3057267)

Sells open and ready to breed.

MCLC SUBSTANCE GIADA 4G is another big stout slick haired fescue tolerant cow with a powerful solid black bull calf by MG/GCS AUTHORITY W14C. She has 4 recorded natural progeny with the ASA.

9

MCLAIN LINK CATTLE CO.

## MCLC BLACK ONYX 22K KENDALL 42

BD: 3/21/22 / ASA#: 4025525 / Tattoo: 42K / 1/4 SM 3/4 AN  
Spring Cow-Calf Pair / Black / Polled

CONNELLY BLACK GRANITE

QHF WWA BLACK ONYX 5Q11

WILKS BLACKCAP 0D82



ASR LONGEVITY Y184

MCLC LONGEVITY 33D HELEN 22H

MCLC IMAGE MAKER 33D



CE	BW	WW	YW	MCE	Milk	MWW	Stay	Marb	BF	REA	API	TI
14.9	-1.3	81.7	134.0	10.6	28.0	68.8	11.7	0.50	0.001	0.62	139.1	87.5

9A: Bull Calf / ASA#: 4352898 / DOB: 4/21/24 / Tattoo: 53M

Sired by MCLC Epic 4G Kernel 28K (ASA#: 4021995)

Sells open and ready to breed.

MCLC BLACK ONYX 22K KENDALL is just a 1/4 blood and they make beautiful cows. She is deep and angular and sells with a bull calf by our herd bull MCLC EPIC 4G KERNEL 28K. She would work awesome to any number of purebred Simmental blaze face bulls.

# MCLAIN LINK CATTLE CO.

Friends, Neighbors and Fellow Beef Cattle Producers,

I take this opportunity to welcome you to my family's complete herd dispersal sale! It is hard for me to believe that I have come to this point in my life and I am certain that I will experience many emotions over the coming weeks and months! My wife, Janet, has decided to retire later this year. As we discussed her retirement, it became more and more clear that it is time for both of us to cut back on some of the hard but enjoyable work on the farm and place ourselves in a spot where we can relax a little. I am due a hip replacement shortly after the sale. Our daughter, Jennifer, is at a point in her busy veterinary career and family life where she cannot handle the day-to-day chores of a large herd. We are all eager to see what our next act looks like.

Our family cattle business has existed in some iteration, since my Grandparents, Roger and Helen McLain bought their first quarter section to raise their family on in the late 1920s. This makes my daughter, Dr. Jennifer McLain Link and her son, Smith, generations four and five with involvement in our farm! When my wife and I moved back to the farm about 20 years ago, we purchased 12 fall bred Commercial heifers of Nichols genetics from one of my daughter's beef cattle clients from New Haven, MO. They were good, functional Momma cows and became the heart of our fall herd. Our spring herd was purchased soon after from my daughter's boss at the time, Dr. Steve Strubberg. You will see names from matriarchal lines from cows from both of these herds (Star, Red, Julie, Myrtle and Smokey) in our catalog today.

After my daughter moved back to the area with her husband and son, our "hobby" grew over the next few years from 40 - 200 head and we moved rapidly from a commercial to a registered Simmental and SimAngus model, using herd-wide AI. Out of all the breeds we have sampled, the Simmental or SimAngus

cow has most consistently brought the best combination of looks, longevity and production for us. We have always culled very hard here for feet, udder attachment, disposition and fertility. A cow simply doesn't stay on our farm if she isn't productive. We keep to 60 day breeding seasons for the best health and consistency in our calf crops. You will see in our offering that the majority of these animals are home-raised. Our goal has always been to make steady improvement to our cows with consistent, proven sires. The Simmental sires Yellowstone, Beacon, Epic, Black Hawk, Bounty and Longevity are represented in our offering.

To this end, I invite you to share in the opportunity to take advantage of the genetic development we have pursued within our cowherd over the last number of years. Jennifer and I believe that form follows function. Superior conformation makes superior animals. We feel we have developed a very consistent, functional, fertile set of production animals that are easy calving and easy keeping on fescue and will help you moving your herd forward and improve your bottom line.

I will make every effort to be available to you in the days leading up to the sale and during sale day to field any questions you may have about our cattle and how they have been fed, bred and cared for. I look forward to speaking to each and every one of you and truly thank you for taking an interest in our dispersal sale! I would also like to thank our many past bull and female customers, near and far, for all of their years of loyal business.

Sincerely,  
Gene McLain, McLain Link Cattle Company

MCLAIN LINK CATTLE CO. DISPERSAL  
 SPRING COW-CALF PAIRS



10A: Heifer Calf / ASA#: 4348592 / DOB: 3/25/24 / Tattoo: 29M  
 Sired by CCR 707 Cowboy 6055B (ASA#: 2882669)

*Sells open and ready to breed.*

MCLC HOMETOWN JLINE GINGER is a stunningly good looking full baldy daughter of CDI HOMETOWN 246A her heifer calf MCLC COWBOY 8G MAGGIE 29M is flat good. This pair needs to be on your short list!

**10** MCLAIN LINK CATTLE CO.  
**MCLC HOMETOWN JLINE GINGER 8G**

BD: 2/26/19 / ASA#: 3580876 / Tattoo: 8G / 1/2 SM 1/4 AN 1/4 CS  
 Spring Cow-Calf Pair / Hetero Black / Polled

GW REDESTINED 642X  
 CDI HOMETOWN 246A  
 CDI MS TRUMP 86U



MCLC JULIE LINE 13304Z  
 MCLC JULIE 403

CE	BW	WW	YW	MCE	Milk	MWW	Stay	Marb	BF	REA	API	TI
9.9	1.1	74.4	114.1	4.6	20.6	57.8	11.8	0.33	-0.073	0.90	120.2	77.4



**11** MCLAIN LINK CATTLE CO.  
**MCLC YSTONE FABLE 48F**

BD: 3/1/18 / ASA#: 3410107 / Tattoo: 48F / 1/2 SM 1/2 CS  
 Spring Cow-Calf Pair / Black / Polled

HOOKS TAURUS 24T  
 HOOK`S YELLOWSTONE 97Y  
 HOOKS SHEYENNE 77S



MCLC MONTANA 109B

CE	BW	WW	YW	MCE	Milk	MWW	Stay	Marb	BF	REA	API	TI
12.3	0.6	79.9	117.9	6.2	36.6	76.4	11.2	0.11	-0.093	0.73	112.4	77.6

11A: Bull Calf / ASA#: 4352901 / DOB: 4/22/24 / Tattoo: 54M  
 Sired by MCLC Trustee 48F Kelvin 31K (ASA#: 4024070)

*Sells open and ready to breed.*

MCLC YSTONE FABLE 48F is a solid black heavy milking daughter of HOOK`S YELLOWSTONE 97Y. She sells with her fifth calf at side.



MCLAIN LINK CATTLE CO. DISPERSAL  
 SPRING COW-CALF PAIRS

12

MCLAIN LINK CATTLE CO.

**MCLC LONGEVITY 25E 54H**

BD: 3/14/20 / ASA#: 3701069 / Tattoo: 55H / 3/4 SM 1/8 AN 1/8 HH  
 Spring Cow-Calf Pair / Hetero Black / Polled

ASR/GLS PACESETTER U862  
**ASR LONGEVITY Y184**  
 ASR MISS PRIMROSE M231



WS ZENITH Z55  
**MCLC MS ZENITH 25E**  
 MCLC SOCKS 275B



LOT 12

CE	BW	WW	YW	MCE	Milk	MWW	Stay	Marb	BF	REA	API	TI
10.6	1.3	65.6	103.7	7.6	11.1	43.8	17.4	0.18	-0.062	0.81	120.7	67.4

12A: Heifer Calf / ASA#: 4352896 / DOB: 4/20/24 / Tattoo: 52M  
 Sired by MCLC Trustee 49G Kimber 39K (ASA#: 4024073)

*Sells open and ready to breed.*  
 MCLC LONGEVITY 25E 54H is another big stout heavy milking daughter of ASR LONGEVITY Y184. She sells with a solid black heifer calf at side.



LOT 13

13

MCLAIN LINK CATTLE CO.

**MCLC BUILT RIGHT 232D 231G**

BD: 8/28/19 / ASA#: 3630296 / Tattoo: 231G / 3/4 SM 1/4 AN  
 Spring Cow-Calf Pair / Black / Polled

CNS DREAM ON L186  
**SVF/NJC BUILT RIGHT N48**  
 NJC EBONY ANTOINETTE



ALL/FHG FIRST ASCENT 117Y  
**MCLC ASCENTRESS 232D**  
 MCLC FISCHER 22A

13A: Bull Calf / ASA#: 4355052 / DOB: 3/27/24 / Tattoo: 31M  
 Sired by MG/GCS Authority W14C (ASA#: 3057267)

*Sells open and ready to breed.*  
 MCLC BUILT RIGHT 232D 231G is a solid black daughter of SVF/NJC BUILT RIGHT N48 whose daughters are highly sought after and are increasingly in shorter supply. She sells with her 4th calf a fancy solid black bull calf.

CE	BW	WW	YW	MCE	Milk	MWW	Stay	Marb	BF	REA	API	TI
11.4	1.4	69.4	101.0	6.2	19.1	53.7	13.0	0.02	-0.064	0.64	103.5	65.7

# MCLAIN LINK CATTLE CO. DISPERSAL SPRING COW-CALF PAIRS

14

MCLAIN LINK CATTLE CO.

## MCLC EPIC 52H KATIE 2K

BD: 2/26/22 / ASA#: 4021989 / Tattoo: 2K / 3/4 SM 1/4 AN  
Spring Cow-Calf Pair / Black / Polled

WS ALL-AROUND Z35  
OMF EPIC E27  
OMF TIME LESS B100



ASR LONGEVITY Y184  
MCLC LONGEVITY 138 52H  
MCLC BLUE 138

CE	BW	WW	YW	MCE	Milk	MWW	Stay	Marb	BF	REA	API	TI
13.5	-0.9	77.6	115.3	9.4	19.5	58.3	16.1	0.28	-0.039	0.71	134.1	80.0

14A: Bull Calf / ASA#: 4348603 / DOB: 3/23/24 / Tattoo: 25M  
Sired by Hooks Blackhawk 50B (ASA#: 2854467)

Sells open and ready to breed.

MCLC EPIC 52H KATIE 2K is another daughter of OMF EPIC E27 and she goes back to one of our favorite and fescue tested AI sires ASR LONGEVITY Y184. She was on our list a potential donor prior to the scheduling the dispersal. She sells with a bull calf sired by HOOK`S BRUISER 19B who is a future herd sire.

15

MCLAIN LINK CATTLE CO.

## MCLC EPIC 121D KIMBERLY 33K

BD: 3/13/22 / ASA#: 4024068 / Tattoo: 33K / 1/2 SM 3/8 CS 1/8 AN  
Spring Cow-Calf Pair / Black / Polled

WS ALL-AROUND Z35  
OMF EPIC E27  
OMF TIME LESS B100



RC ADDED VALUE 101B  
MCLC JULIE LINE 121D  
MCLC JULIE LINE 13304Z

CE	BW	WW	YW	MCE	Milk	MWW	Stay	Marb	BF	REA	API	TI
12.9	-0.7	72.8	107.4	8.4	17.5	53.9	16.5	0.23	-0.043	0.54	128.8	75.2

15A: Bull Calf / ASA#: 4348579 / DOB: 3/24/24 / Tattoo: 26M  
Sired by Hooks Blackhawk 50B (ASA#: 2854467)

Sells open and ready to breed.

MCLC Epic 121D Kimberly 33K is another young daughter of the great OMF EPIC E27 but this time she is backed by a super maternal bull RC ADDED VALUE 101B. Having River Creek genetics in your cow herd pays dividends. They are the most progressive Simmental breeders in the country right now. She sells with a HOOK`S BLACK HAWK 50B sired bull calf. Use him as a herd sire and keep every daughter.



LOT 16

16

MCLAIN LINK CATTLE CO.

## MCLC TRUSTEE 138B KELEN 19K

BD: 3/7/22 / ASA#: 4021986 / Tattoo: 19K / 3/4 SM 1/4 AN  
Spring Cow-Calf Pair / Black / Homo Polled

CDI TRUSTEE 370D  
CDI TRUSTEE 387F  
CDI MISS HOMETOWN 163C



ALL/FHG FIRST ASCENT 117Y  
MISS CHARLO 451B  
BAIRDS RIGHT TIME S136

CE	BW	WW	YW	MCE	Milk	MWW	Stay	Marb	BF	REA	API	TI
11.1	0.6	76.9	120.1	3.1	24.2	63.6	15.0	0.15	-0.072	0.93	120.9	75.9

16A: bull Calf / ASA#: 4355050 / DOB: 5/2/24 / Tattoo: 60m  
Sired by MCLC Epic 4G Kernel 28K (ASA#: 4021995)

Sells open and ready to breed.

MCLC TRUSTEE 138B KELEN 19K is a homo polled daughter of CDI TRUSTEE 387F backed maternally by the OVAL F NICOLETTE N443 cow family the Fischer has has made famous in MO & around the country. Kelen is a solid black beast of a young cow. She will work in anyone's program.

17

MCLAIN LINK CATTLE CO.

## MCLC BLACK HAWK 30G KANDIE 20K

BD: 3/8/22 / ASA#: 4022006 / Tattoo: 20K / 3/4 SM 1/4 AN  
Spring Cow-Calf Pair / Black / Polled

HOOK`S XAVIER 14X  
HOOK`S BLACK HAWK 50B  
HOOK`S YVETTE 100Y



KOCH BIG TIMBER 685D  
MCLC TIMBER GILDA 30G  
MCLC MS FIRST ASCENT 92D

CE	BW	WW	YW	MCE	Milk	MWW	Stay	Marb	BF	REA	API	TI
14.1	-1.4	83.0	126.5	7.0	21.9	63.3	17.4	0.26	-0.029	1.08	140.2	84.0

17A: Heifer Calf / ASA#: 4348583 / DOB: 4/9/24 / Tattoo: 46M  
Sired by MCLC Epic 4G Kernel 28K (ASA#: 4021995)

Sells open and ready to breed.

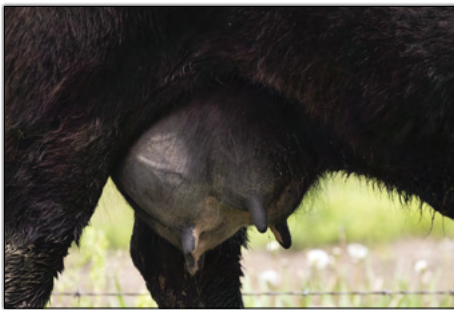
MCLC BLACK HAWK 30G KANDIE this 3/4 SM 1/4 AN daughter of HOOK`S BLACK HAWK 50B has a great spread of EPD's and would work awesome to a power and spread bull. She sells with a heifer calf.



MCLAIN LINK CATTLE CO. DISPERSAL  
 SPRING COW-CALF PAIRS



LOTS 18 AND 18A



LOT 19



LOT 19

18

MCLAIN LINK CATTLE CO.

**MCLC MS BOULEVARD 30E**

BD: 3/8/17 / ASA#: 3366042 / Tattoo: 30E / 3/4 SM 3/16 AN 1/16 AR  
 Spring Cow-Calf Pair / Black / Polled

HOOK`S YELLOWSTONE 97Y  
 HOOK`S BOULEVARD 41B  
 HOOK`S ULTIMO 14U



TNT FINALE W241  
 TRPH MS FINALE Z208  
 3C CROCUS X0314 B

19

MCLAIN LINK CATTLE CO.

**HILLS MERIT TENX G401B**

BD: 1/30/14 / ASA#: 2877083 / Tattoo: G401B / 1/2 SM 1/2 AN  
 Spring Cow-Calf Pair / Black / Polled

MYTTY IN FOCUS  
 A A R TEN X 7008 S A  
 A A R LADY KELTON 5551



HILLS MERIT U16  
 HILLS SPEED MERIT 24Z  
 HRS 863L SPEED 838U

CE	BW	WW	YW	MCE	Milk	MWW	Stay	Marb	BF	REA	API	TI
13.1	0.4	63.5	99.8	6.4	23.2	54.9	19.6	0.43	-0.054	0.62	142.3	74.5

18A: Bull Calf / ASA#: 4348612 / DOB: 3/5/24 / Tattoo: 6M  
 Sired by SFI Brigade D21 (ASA#: 3139298)

Sells open and ready to breed.

MCLC MS BOULEVARD 30E is a moderate ground pounding daughter of our herd matron TRPH MS FINALE Z208. She has an exceptional solid black bull calf by SFI BRIGADE D21 which is her 6th calf. Buy with confidence, this one's dam is still in production and looks great!

CE	BW	WW	YW	MCE	Milk	MWW	Stay	Marb	BF	REA	API	TI
13.4	-0.7	68.8	112.5	9.4	16.6	51.1	11.7	0.52	-0.040	0.44	135.7	80.3

19A: Bull Calf / ASA#: 4338611 / DOB: 3/16/24 / Tattoo: 21M  
 Sired by OMF Epic E27 (ASA#: 3317371)

Sells open and ready to breed.

HILLS MERIT TENX G401B is an oldie but a goodie. She is sired by the famous A A R TEN X 7008 S A and has a cowboy & girl pedigree on the bottom side with TRIPLE C BETTIS S72J & real world breeders WESTERN CATTLE SOURCE. She has 8 recorded progeny and sells with an OMF EPIC E27 sired herd sire at side who is as big and stout as you will find in the dispersal cattle.

# MCLAIN LINK CATTLE CO. DISPERSAL SPRING COW-CALF PAIRS



**LOT 20**

**20**

MCLAIN LINK CATTLE CO.

## MCLC TIMBER GIONA 5G

BD: 2/24/19 / ASA#: 3580883 / Tattoo: 5G / 3/4 SM 3/16 AN 1/16 AR  
Spring Cow-Calf Pair / Black / Polled

HOOK`S YELLOWSTONE 97Y

KOCH BIG TIMBER 685D

KOCH MS HOOKS BOY



TNT FINALE W241

TRPH MS FINALE Z208

3C CROCUS X0314 B

CE	BW	WW	YW	MCE	Milk	MWW	Stay	Marb	BF	REA	API	TI
14.8	-2.1	69.7	105.7	8.6	23.7	58.5	18.5	0.36	-0.026	0.47	144.0	78.9

20A: Heifer Calf / ASA#: 4348588 / DOB: 3/6/24 / Tattoo: 8M  
Sired by MG/GCS Authority W14C (ASA#: 3057267)

Sells open and ready to breed.

MCLC TIMBER GIONA 5G is a KOCH BIG TIMBER 685D daughter of the one and only TRPH MS FINALE Z208. She has 5 recorded progeny. Hopefully you can start to see the pattern of how good these Z208 daughters are. She sells with a daughter by MG/GSC AUTHORITY W14C. This is a great maternal 2 for 1 package.

**22**

MCLAIN LINK CATTLE CO.

## MCLC ONYX 67H KANDICE 38K

BD: 3/16/22 / ASA#: 4024071 / Tattoo: 38K / 1/8 SM 7/8 AN  
Spring Cow-Calf Pair / Black / Polled

CONNELLY BLACK GRANITE

QHF WWA BLACK ONYX 5Q11

WILKS BLACKCAP 0D82



SPRING COVE CROSSBOW

MCLC CROSSBOW 73F 67H

MCLC SURE BET FARROW 73F

CE	BW	WW	YW	MCE	Milk	MWW	Stay	Marb	BF	REA	API	TI
16.2	-1.4	84.8	142.7	9.7	31.7	74.2	11.7	0.73	0.013	0.50	155.3	95.7

22A: Heifer Calf / ASA#: 4348575 / DOB: 3/29/24 / Tattoo: 37M  
Sired by MCLC Epic 4G Kernel 28K (ASA#: 4021995)

Sells open and ready to breed.

MCLC ONYX 67H KANDICE 38K is a 1/8 SM 7/8 AN and is begging for use with a purebred Simmental bull.

**21**

MCLAIN LINK CATTLE CO.

## MCLC RAINDANCE 90D KEISHA 25K

BD: 3/9/22 / ASA#: 4022013 / Tattoo: 25K / 1/4 SM 3/4 AN  
Spring Cow-Calf Pair / Black / Polled

COLEMAN CHARLO 0256

S A V RAINDANCE 6848

S A V BLACKCAP MAY 4136



W/C PALEFACE 756X

MCLC MS PALE FACE 90D

MCLC BLUE 117

CE	BW	WW	YW	MCE	Milk	MWW	Stay	Marb	BF	REA	API	TI
13.1	0.6	69.2	119.0	6.0	22.4	57.0	10.6	0.28	0.003	0.47	114.6	71.5

21A: Bull Calf / ASA#: 4348580 / DOB: 3/28/24 / Tattoo: 35M  
Sired by Hooks Blackhawk 50B (ASA#: 2854467)

Sells open and ready to breed.

MCLC RAINDANCE 90D KEISHA is a 1/4 SM 3/4 AN out of S A V RAINDANCE 6848 who has been used across the country to add volume and fleshing ability.

**23**

MCLAIN LINK CATTLE CO.

## MCLC STELLAR 30E JULIP 15J

BD: 3/7/21 / ASA#: 3897171 / Tattoo: 15J / 3/8 SM 19/32 AN 1/32 AR  
Spring Cow-Calf Pair / Black / Polled

MOHNEN SUBSTANTIAL 272

SITZ STELLAR 726D

SITZ PRIDE 200B



HOOK`S BOULEVARD 41B

MCLC MS BOULEVARD 30E

TRPH MS FINALE Z208

CE	BW	WW	YW	MCE	Milk	MWW	Stay	Marb	BF	REA	API	TI
12.8	-1.2	74.2	124.1	7.5	20.5	58.4	17.7	0.52	0.011	0.41	146.4	82.2

23A: Bull Calf / ASA#: 4348601 / DOB: 3/15/24 / Tattoo: 17M  
Sired by Hooks Blackhawk 50B (ASA#: 2854467)

Sells open and ready to breed.

MCLC STELLAR 30E JULIP 15J is a daughter of the super popular SITZ STELLAR 726D and her dam is a HOOK`S BOULEVARD 41B out of our herd matron TRPH MS FINALE Z208. She sells with a HOOK`S BLACK HAWK 50B bull calf.



# MCLAIN LINK CATTLE CO. DISPERSAL SPRING COW-CALF PAIRS

**24**

MCLAIN LINK CATTLE CO.

## MCLC TIMBER 21F JESSIE 18J

BD: 3/10/21 / ASA#: 3897133 / Tattoo: 18J / 1/2 SM 3/8 AN 1/8 CS  
Spring Cow-Calf Pair / Black / Polled

HOOK`S YELLOWSTONE 97Y  
KOCH BIG TIMBER 685D  
KOCH MS HOOKS BOY



CLINES BLACK GOLD 443 TEN X  
MCLC JLINE BG FAVOR 21F  
MCLC JULIE LINE 13304Z

CE	BW	WW	YW	MCE	Milk	MWW	Stay	Marb	BF	REA	API	TI
15.6	-1.8	68.7	106.5	8.9	18.1	51.8	14.3	0.49	-0.011	0.24	142.3	80.3

24A: Heifer Calf / ASA#: 4355051 / DOB: 4/30/24 / Tattoo: 59M  
Sired by MCLC Trustee 49G Kimber 39K (ASA#: 4024073)

Sells open and ready to breed.

MCLC TIMBER 21F JESSIE 18J is a MCLC TIMBER 21F JESSIE 18J daughter going back to our JULIE cow family.

**25**

MCLAIN LINK CATTLE CO.

## MCLC ENHANCE ABSOLUTE CLINE 320 204J

BD: 8/4/21 / Commercial / Tattoo: 204J  
Spring Cow-Calf Pair



CE	BW	WW	YW	MCE	Milk	MWW	Stay	Marb	BF	REA	API	TI
----	----	----	----	-----	------	-----	------	------	----	-----	-----	----

25A: Heifer Calf / DOB: 4/1/24 / Tattoo: 39M  
Sired by Black Onyx (AAA#: 18463791)

Sells open and ready to breed.

MCLC Enhance absolute Cline 320 204J is an ET born PB angus cow that I do not have complete embryo data on. We are working on getting her recorded as a Angus based cow in the Simmental data base. We may have more information prior to the sale on the supplement sheet.

**26**

MCLAIN LINK CATTLE CO.

## MCLC LONGEVITY 90D HELENA 32H

BD: 3/10/20 / ASA#: 3701034 / Tattoo: 32H / 3/4 SM 1/4 AN  
Spring Cow-Calf Pair / Black / Polled

ASR/GLS PACESETTER U862  
ASR LONGEVITY Y184  
ASR MISS PRIMROSE M231



W/C PALEFACE 756X  
MCLC MS PALE FACE 90D  
MCLC BLUE 117

CE	BW	WW	YW	MCE	Milk	MWW	Stay	Marb	BF	REA	API	TI
11.4	0.6	68.9	107.8	8.1	14.4	48.8	16.8	0.20	-0.050	0.73	124.0	70.9

26A: Bull Calf / ASA#: 4348606 / DOB: 3/28/24 / Tattoo: 34M  
Sired by MG/GCS Authority W14C (ASA#: 3057267)

Sells open and ready to breed.

MCLC LONGEVITY 90D HELENA is a ASR LONGEVITY Y184 back to a really nice phenotype and female maker W/C PALEFACE 756X. She sells with a bull calf by MG/GCS AUTHORITY W14C.

**27**

MCLAIN LINK CATTLE CO.

## MCLC LONGEVITY 195 HELEIN 43H

BD: 3/12/20 / ASA#: 3701085 / Tattoo: 43H / 1/2 SM 1/2 AN  
Spring Cow-Calf Pair / Black / Polled

ASR/GLS PACESETTER U862  
ASR LONGEVITY Y184  
ASR MISS PRIMROSE M231



MCLC BLUE 195

CE	BW	WW	YW	MCE	Milk	MWW	Stay	Marb	BF	REA	API	TI
11.7	-0.1	60.8	94.7	8.4	16.1	46.4	13.7	0.35	-0.028	0.63	123.5	70.2

27A: Heifer Calf / ASA#: 4352895 / DOB: 4/23/24 / Tattoo: 56M  
Sired by MCLC AFTERSHOCK 300A 228G (ASA#: 3630342)

Sells open and ready to breed.

MCLC LONGEVITY 195 HELEIN 43H has 3 calves recorded to her.

**28**

MCLAIN LINK CATTLE CO.

## MCLC LONGEVITY 138 52H

BD: 3/13/20 / ASA#: 3701086 / Tattoo: 52H / 1/2 SM 1/2 AN  
Spring Cow-Calf Pair / Black / Polled

ASR/GLS PACESETTER U862  
ASR LONGEVITY Y184  
ASR MISS PRIMROSE M231



MCLC BLUE 138

CE	BW	WW	YW	MCE	Milk	MWW	Stay	Marb	BF	REA	API	TI
12.1	-0.2	64.0	99.0	8.5	20.4	52.3	13.7	0.35	-0.028	0.67	125.1	72.5

28A: Heifer Calf / ASA#: 4348573 / DOB: 3/15/24 / Tattoo: 18M  
Sired by OMF Epic E27 (ASA#: 3317371)

Sells open and ready to breed.

MCLC LONGEVITY 138 52H has 3 calves recorded to her.

**29**

MCLAIN LINK CATTLE CO.

## MCLC LONGEVITY Z208 HIONA72H

BD: 3/17/20 / ASA#: 3701104 / Tattoo: 72H / 3/4 SM 3/16 AN 1/16 AR  
Spring Cow-Calf Pair / Black / Polled

ASR/GLS PACESETTER U862  
ASR LONGEVITY Y184  
ASR MISS PRIMROSE M231



TNT FINALE W241  
TRPH MS FINALE Z208  
3C CROCUS X0314 B

CE	BW	WW	YW	MCE	Milk	MWW	Stay	Marb	BF	REA	API	TI
12.7	0.5	71.4	109.7	9.1	21.5	57.2	20.1	0.26	-0.051	0.84	136.4	74.8

29A: Heifer Calf / ASA#: 4348591 / DOB: 3/10/24 / Tattoo: 13M  
Sired by OMF Epic E27 (ASA#: 3317371)

Sells open and ready to breed.

MCLC LONGEVITY Z208 HIONA72H is an ASR LONGEVITY Y184 daughter of the great TRPH MS FINALE Z208. She has 3 calves recorded to her including the OMF EPIC E27 sired daughter that sells with her.

**30**

MCLAIN LINK CATTLE CO.

## MCLC AFTERSHOCK 18E HILDA 23H

BD: 3/8/20 / ASA#: 3701045 / Tattoo: 23H / 3/4 SM 1/4 AN  
Spring Cow-Calf Pair / Black / Polled

HOOK`S YELLOWSTONE 97Y  
CLRS AFTER SHOCK 604 A  
HOOKS SARITA 4S



HOOK`S BEACON 56B  
MCLC BEACONESS 18E  
MCLC CRUMPACKER 260B

CE	BW	WW	YW	MCE	Milk	MWW	Stay	Marb	BF	REA	API	TI
13.4	-0.4	72.5	110.3	6.5	15.3	51.5	12.4	0.36	-0.036	0.77	128.6	78.1

30A: Heifer Calf / ASA#: 4348600 / DOB: 3/15/24 / Tattoo: 20M  
Sired by DMCC Hitman 116G (ASA#: 3617255)

Sells open and ready to breed.

MCLC Aftershock 18E Hilda 23H is a daughter of CLRS AFTER SHOCK 604 A back to a HOOK`S BEACON 56B cow. She sells with DMCC HITMAN 116G sired heifer calf.

**31**

MCLAIN LINK CATTLE CO.

## MCLC CROSSBOW 73F 67H

BD: 3/16/20 / ASA#: 3701042 / Tattoo: 67H / 1/4 SM 3/4 AN  
Spring Cow-Calf Pair / Black / Polled

KM BROKEN BOW 002  
SPRING COVE CROSSBOW  
SPRING COVE PRETTY 205



DIKEMANS SURE BET  
MCLC SURE BET FARROW 73F  
MCLC 3 509Z BENNETT

CE	BW	WW	YW	MCE	Milk	MWW	Stay	Marb	BF	REA	API	TI
14.1	-0.7	71.5	118.4	7.0	24.7	60.5	10.8	0.80	-0.004	0.38	147.8	87.8

31A: Heifer Calf / ASA#: 4348596 / DOB: 4/4/24 / Tattoo: 42M  
Sired by CCR 707 Cowboy 6055B (ASA#: 2882669)

Sells open and ready to breed.

MCLC CROSSBOW 73F 67H is a 1/4 SM 3/4 AN backed by SPRING COVE CROSSBOW & DIKEMANS SURE BET. She has 3 calves recorded to her.

# MCLAIN LINK CATTLE CO. DISPERSAL SPRING COW-CALF PAIRS

32

MCLAIN LINK CATTLE CO.

## MCLC SURE BET GLADE 24G

BD: 3/2/19 / ASA#: 3580848 / Tattoo: 24G / 3/4 SM 1/4 CS  
Spring Cow-Calf Pair / Black / Polled

TJ 57J THE GAMBLER  
DIKEMANS SURE BET  
MEGAN 9M



HOOK`S YELLOWSTONE 97Y  
MCLC MS YELLOWSTONE 6D  
MCLC MONTANA 108B

CE	BW	WW	YW	MCE	Milk	MWW	Stay	Marb	BF	REA	API	TI
9.1	1.5	78.1	114.1	2.8	23.7	62.7	14.2	0.21	-0.090	0.77	129.2	80.7

32A: Bull Calf / ASA#: / DOB: 4/8/24 / Tattoo: 44M  
Sired by CCR 707 Cowboy 6055B (ASA#: 2882669)

Sells open and ready to breed.

MCLC SURE BET GLADE 24G is a DIKEMANS SURE BET daughter with 4 recorded progeny.

33

MCLAIN LINK CATTLE CO.

## MCLC TIMBER GLADE 25G

BD: 3/3/19 / ASA#: 3580843 / Tattoo: 25G / 1/2 SM 1/2 AN  
Spring Cow-Calf Pair / Black / Polled

HOOK`S YELLOWSTONE 97Y  
KOCH BIG TIMBER 685D  
KOCH MS HOOKS BOY



H A IMAGE MAKER 0415  
MCLC IMAGE MAKER B12

CE	BW	WW	YW	MCE	Milk	MWW	Stay	Marb	BF	REA	API	TI
15.1	-2.1	66.5	101.5	8.7	20.1	53.5	14.4	0.40	-0.001	0.23	136.1	76.9

33A: Heifer Calf / ASA#: 4348586 / DOB: 3/24/24 / Tattoo: 27M  
Sired by OMF Epic E27 (ASA#: 3317371)

Sells open and ready to breed.

MCLC TIMBER GLADE 25G has 4 recorded progeny.

34

MCLAIN LINK CATTLE CO.

## MCLC TIMBER GILDA 30G

BD: 3/4/19 / ASA#: 3580814 / Tattoo: 30G / 3/4 SM 1/4 AN  
Spring Cow-Calf Pair / Black / Polled

HOOK`S YELLOWSTONE 97Y  
KOCH BIG TIMBER 685D  
KOCH MS HOOKS BOY



ALL/FHG FIRST ASCENT 117Y  
MCLC MS FIRST ASCENT 92D  
MCLC BLUE 218

CE	BW	WW	YW	MCE	Milk	MWW	Stay	Marb	BF	REA	API	TI
12.8	-1.3	67.7	101.8	7.0	24.8	58.5	16.5	0.25	-0.037	0.47	129.1	74.0

34A: Heifer Calf / ASA#: 4348610 / DOB: 4/1/24 / Tattoo: 38M  
Sired by SFI Brigade D21 (ASA#: 3139298)

Sells open and ready to breed.

MCLC TIMBER GILDA 30G has 4 recorded progeny and sells with a purebred daughter at side by SFI BRIGADE D21.

35

MCLAIN LINK CATTLE CO.

## MCLC TIMBER GLADICE 49G

BD: 3/8/19 / ASA#: 3580813 / Tattoo: 49G / 3/4 SM 1/4 AN  
Spring Cow-Calf Pair / Black / Homo Polled

HOOK`S YELLOWSTONE 97Y  
KOCH BIG TIMBER 685D  
KOCH MS HOOKS BOY



ALL/FHG FIRST ASCENT 117Y  
MISS CHARLO 451B  
BAIRDS RIGHT TIME S136

CE	BW	WW	YW	MCE	Milk	MWW	Stay	Marb	BF	REA	API	TI
12.6	-1.8	67.7	104.5	6.1	22.5	57.1	17.3	0.21	-0.034	0.42	129.2	73.3

35A: Heifer Calf / ASA#: 4348609 / DOB: 3/29/24 / Tattoo: 36M  
Sired by CCR 707 Cowboy 6055B (ASA#: 2882669)

Sells open and ready to breed.

MCLC TIMBER GLADICE 49G is homo polled and sells with a CCR 707 COWBOY 6055B sired daughter at side.



LOT 36

36

MCLAIN LINK CATTLE CO.

## MCLC HICKOK GLADICE 220G

BD: 8/25/19 / ASA#: 3630323 / Tattoo: 220G / 1/4 SM 3/4 AN  
Spring Cow-Calf Pair / Black / Homo Polled

CONNELLY CONSENSUS 7229  
MILL BAR HICKOK 7242  
MILL BAR BEMINDFUL MAID 6304



HOOK`S BOULEVARD 41B  
MCLC BOULEVARD EVIE 227E  
WHITE STAR EVERELDA 102A

CE	BW	WW	YW	MCE	Milk	MWW	Stay	Marb	BF	REA	API	TI
14.7	0.3	75.0	126.6	5.7	27.3	65.6	17.7	0.66	0.000	0.54	154.8	85.8

36A: Heifer Calf / ASA#: 4348595 / DOB: 3/17/24 / Tattoo: 23M  
Sired by OMF Epic E27 (ASA#: 3317371)

Sells open and ready to breed.

MCLC HICKOK GLADICE 220G is homo polled. She has 3 recorded progeny and sells with a daughter sired by OMF EPIC E27.



DIKEMANS SURE BET - SIRE OF LOT 37

37

MCLAIN LINK CATTLE CO.

## MCLC SURE BET 16A 234F

BD: 9/1/18 / ASA#: 3485156 / Tattoo: 234F / 1/2 SM 1/2 AN  
Spring Cow-Calf Pair / Black / Polled

TJ 57J THE GAMBLER  
DIKEMANS SURE BET  
MEGAN 9M



MCLC FISCHER 16A

CE	BW	WW	YW	MCE	Milk	MWW	Stay	Marb	BF	REA	API	TI
11.2	0.1	63.0	94.6	5.4	21.0	52.4	12.7	0.43	-0.034	0.49	124.6	73.3

37A: Bull Calf / ASA#: 4348605 / DOB: 4/3/24 / Tattoo: 41M  
Sired by CCR 707 Cowboy 6055B (ASA#: 2882669)

Sells open and ready to breed.

MCLC SURE BET 16A 234F has four recorded progeny and sells with a bull calf sired by CCR 707 COWBOY 6055B.



# MCLAIN LINK CATTLE CO. DISPERSAL SPRING COW-CALF PAIRS

38

MCLAIN LINK CATTLE CO.

## MCLC FIONA B02

BD: 2/11/14 / ASA#: 2838890 / Tattoo: B02 / 5/8 SM 3/8 AN  
Spring Cow-Calf Pair / Black / Polled

GW PREMIUM BEEF 021TS

GW ROBUST 605Z  
GW MISS GPRD 123X

X

TNT FINALE W241

TRPH MS FINALE Z208  
3C CROCUS X0314 B



LOT 38

CE	BW	WW	YW	MCE	Milk	MWW	Stay	Marb	BF	REA	API	TI
11.7	0.2	80.2	122.0	4.8	32.0	72.1	14.3	0.42	-0.042	0.95	136.0	85.2

38A: Bull Calf / ASA#: 4352897 / DOB: 4/14/24 / Tattoo: 50M

Sired by MCLC AFTERSHOCK 300A 228G (ASA#: 3630342)

Sells open and ready to breed.

MCLC FIONA B02 is a GW ROBUST 605Z sired daughter of TRPH MS FINALE Z208. Take a look at her nice white faced calf which is her 8th!



LOT 40

39

MCLAIN LINK CATTLE CO.

## MISS CHARLO 451B

BD: 2/11/14 / ASA#: 2903152 / Tattoo: 451B / 1/2 SM 1/2 AN  
Spring Cow-Calf Pair / Black / Homo Polled

MR NLC UPGRADE U8676

ALL/FHG FIRST ASCENT 117Y  
OVAL F NICOLETTE N443

X

ALBERDA RIGHT TIME 326

BAIRDS RIGHT TIME S136  
BAIRDS NELLIE NAK N66

CE	BW	WW	YW	MCE	Milk	MWW	Stay	Marb	BF	REA	API	TI
10.2	-0.9	59.0	94.8	3.0	22.7	54.1	15.1	0.06	-0.042	0.42	109.3	63.3

39A: Heifer Calf / ASA#: 4348569 / DOB: 3/28/24 / Tattoo: 33M

Sired by Hooks Blackhawk 50B (ASA#: 2854467)

Sells open and ready to breed.

MISS CHARLO 451B is a true half blood stemming from a cow from the former ASA Carcass Merit herd WANG RANCH.

40

MCLAIN LINK CATTLE CO.

## MCLC CROSSBOW F33 HELGA 3H

BD: 2/22/20 / ASA#: 3701043 / Tattoo: 3H / PB AN  
Spring Cow-Calf Pair / Red / Polled

KM BROKEN BOW 002

SPRING COVE CROSSBOW  
SPRING COVE PRETTY 205

X

K C F BENNETT SOUTHSIDE

MCLC SSIDE FARRAH 33F  
MCLC IMAGE MAKER B16

CE	BW	WW	YW	MCE	Milk	MWW	Stay	Marb	BF	REA	API	TI
15.2	-1.9	78.3	136.0	8.8	27.2	67.0	9.8	0.92	0.023	0.30	143.9	86.7

40A: Bull Calf / ASA#: 4348597 / DOB: 4/2/24 / Tattoo: 40M

Sired by SFI Brigade D21 (ASA#: 3139298)

Sells open and ready to breed.

MCLC Crossbow F33 Helga 3H is a nice purebred Angus daughter of SPRING COVE CROSSBOW. She has spread EPD's and has loads of marbling. She sells with a really nice bull calf sired by SFI BRIGADE D21.

# MCLAIN LINK CATTLE CO. DISPERSAL SPRING COW-CALF PAIRS



41

MCLAIN LINK CATTLE CO.

## MCLC JULIE LINE 121D

BD: 3/23/16 / ASA#: 3376489 / Tattoo: 121D / 1/2 SM 1/4 AN 1/4 CS  
Spring Cow-Calf Pair / Black / Polled

KNH ADDED VALUE 58W  
RC ADDED VALUE 101B  
RC MISS INTEGRITY 504X



MCLC JULIE LINE 13304Z  
MCLC JULIE 403

CE	BW	WW	YW	MCE	Milk	MWW	Stay	Marb	BF	REA	API	TI
11.5	-0.5	56.0	85.2	7.0	16.4	44.3	14.6	0.25	-0.037	0.36	117.4	64.9

41A: Heifer Calf / ASA#: 4348787 / DOB: 3/6/24 / Tattoo: 7M  
Sired by SFI Brigade D21 (ASA#: 3139298)

Sells open and ready to breed.

MCLC JULIE LINE 121D is a daughter of RC ADDED VALUE 101B from our JULIE cow family. She sells with her 7th calf at side.

42

MCLAIN LINK CATTLE CO.

## MCLC JULIE LINE 13304

BD: 4/1/13 / ASA#: 3630277 / Tattoo: 13 304 / 1/2 AN 1/2 CS  
Spring Cow-Calf Pair



CE	BW	WW	YW	MCE	Milk	MWW	Stay	Marb	BF	REA	API	TI
12.8	-0.4	58.9	88.3	7.1	21.6	50.9	3.5	0.26	-0.040	0.31	98.7	67.5

42A: Bull Calf / ASA#: 4348572 / DOB: 3/13/24 / Tattoo: 15M  
Sired by OMF Epic E27 (ASA#: 3317371)

Sells open and ready to breed.

MCLC JULIE LINE 13304Z another Julie cow family member with 3 recorded calves.

43

MCLAIN LINK CATTLE CO.

## MCLC JULIE'S DESIGN POPEYE

BD: 4/1/11 / ASA#: 3630275 / Tattoo: 11 304 / 1/2 AN 1/2 CS  
Spring Cow-Calf Pair



CE	BW	WW	YW	MCE	Milk	MWW	Stay	Marb	BF	REA	API	TI
12.1	0.0	61.8	92.4	6.7	24.4	55.1	3.5	0.27	-0.040	0.34	98.1	68.9

43A: Heifer Calf / ASA#: 4348574 / DOB: 3/24/24 / Tattoo: 32M  
Sired by CCR 707 Cowboy 6055B (ASA#: 2882669)

Sells open and ready to breed.

MCLC Julie's Design Popeye has 5 recorded progeny and sells with a heifer calf sired by CCR 707 COWBOY 6055B.

44

MCLAIN LINK CATTLE CO.

## MCLC JLINE BG FAVOR 21F

BD: 2/13/18 / ASA#: 3410143 / Tattoo: 21F / 3/4 AN 1/4 CS  
Spring Cow-Calf Pair / Black / Polled



A A R TEN X 7008 SA  
CLINES BLACK GOLD 443 TEN X  
CLINES PRIDE 243 443 FA

MCLC JULIE LINE 13304Z  
MCLC JULIE 403

CE	BW	WW	YW	MCE	Milk	MWW	Stay	Marb	BF	REA	API	TI
17.7	-1.2	60.1	97.9	9.8	15.5	44.3	10.0	0.61	0.004	0.07	135.4	75.6

44A: Heifer Calf / ASA#: 4348577 / DOB: 3/4/24 / Tattoo: 5M  
Sired by SFI Brigade D21 (ASA#: 3139298)

Sells open and ready to breed.

MCLC JLINE BG FAVOR 21F is a Julie cow family member with 5 recorded progeny selling with a SFI BRIGADE D21 sired heifer calf.

45

MCLAIN LINK CATTLE CO.

## MCLC SSIDE FARRAH 33F

BD: 2/23/18 / ASA#: 3377111 / Tattoo: 33F / PB AN  
Spring Cow-Calf Pair / Black / Polled



NICHOLS EXTRA K205  
K C F BENNETT SOUTHSIDE  
K C F MISS 208 S11

MCLC IMAGE MAKER B16

CE	BW	WW	YW	MCE	Milk	MWW	Stay	Marb	BF	REA	API	TI
11.7	0.1	79.2	131.7	8.6	30.5	70.2	8.2	0.66	0.020	0.35	117.3	77.7

45A: Bull Calf / ASA#: 4348590 / DOB: 3/26/24 / Tattoo: 30M  
Sired by Hooks Blackhawk 50B (ASA#: 2854467)

Sells open and ready to breed.

MCLC SSIDE FARRAH 33F is a purebred Angus with 5 recorded progeny.

46

MCLAIN LINK CATTLE CO.

## MCLC GOLD COCO 75E

BD: 4/4/17 / ASA#: 3845305 / Tattoo: 75E / 1/2 AN 1/2 CS  
Spring Cow-Calf Pair / Black / Polled



A A R TEN X 7008 SA  
CLINES BLACK GOLD 443 TEN X  
CLINES PRIDE 243 443 FA

CE	BW	WW	YW	MCE	Milk	MWW	Stay	Marb	BF	REA	API	TI
17.4	0.1	77.5	121.4	9.6	31.3	68.8	5.9	0.51	-0.024	0.28	129.6	85.7

46A: Heifer Calf / ASA#: 4348593 / DOB: 3/17/24 / Tattoo: 22M  
Sired by OMF Epic E27 (ASA#: 3317371)

Sells open and ready to breed.

MCLC GOLD COCO 75E has 4 recorded progeny and sells with a 1/2 blood daughter at side by OMF EPIC E27.

47

MCLAIN LINK CATTLE CO.

## MCLC IMAGE MAKER B30

BD: 2/23/14 / ASA#: 3366054 / Tattoo: B30 / PB AN  
Spring Cow-Calf Pair



HERO 6267 OF R R 2418  
H A IMAGE MAKER 0415  
H A RITO BLACKCAP 9038

CE	BW	WW	YW	MCE	Milk	MWW	Stay	Marb	BF	REA	API	TI
15.3	-1.8	61.8	96.3	8.4	27.6	58.9	10.5	0.44	0.024	0.09	109.0	63.5

47A: Heifer Calf / ASA#: 4348599 / DOB: 3/9/24 / Tattoo: 12M  
Sired by SFI Brigade D21 (ASA#: 3139298)

Sells open and ready to breed.

MCLC IMAGE MAKER B30 is a purebred Angus with 8 recorded progeny and sells with a SFI BRIGADE D21 sired heifer calf.



# MCLAIN LINK CATTLE CO. DISPERSAL SPRING COW-CALF PAIRS



**LOT 48**

**48**

MCLAIN LINK CATTLE CO.

## MCLC R294 Y 28 28E

BD: 3/7/17 / ASA#: 3630279 / Tattoo: 28E / 3/4 HH 1/4 AN  
Spring Cow-Calf Pair / Red

X

48A: Bull Calf / ASA#: 4348507 / DOB: 3/15/24 / Tattoo: 19M  
Sired by OMF Epic E27 (ASA#: 3317371)

Sells open and ready to breed.

MCLC R294 Y 28 28E is an absolute stunning 3/4 HH 1/4 AN red baldy who is set up perfectly to make calves with maximum heterosis. She is a head turner selling with her 5th calf.

CE	BW	WW	YW	MCE	Milk	MWW	Stay	Marb	BF	REA	API	TI
13.0	-2.0	25.1	45.6	7.4	15.4	27.8	3.6	0.09	-0.007	0.06	102.1	58.0

**49**

MCLAIN LINK CATTLE CO.

## MCLC TECUMSEH 29C JELLIE 51J

BD: 4/17/21 / ASA#: 3897175 / Tattoo: 51J / 3/4 SM 1/8 CS 1/16 AN 1/16 HO  
Spring Cow-Calf Pair / Red / Polled

TNT GUNNER N208

MVS TECUMSEH

MVS MISS SCARLET Z16

X

SVF/NJC BUILT RIGHT N48

CAMERON OF JULIE BR

MCLC JULIE 403

**50**

MCLAIN LINK CATTLE CO.

## MCLC XENA`S FENNA 202F

BD: 8/18/18 / ASA#: 3485139 / Tattoo: 202F / 3/4 SM 1/4 AR  
Spring Cow-Calf Pair / Red / Polled

R PLUS HARD ROCK 145X

ELLINGSON COMPLETE A358

ELLINGSON MS AMIGO X5

X

WS BEEF MAKER R13

BD3P DURHEIM 36

BD3P DURHEIM 707

CE	BW	WW	YW	MCE	Milk	MWW	Stay	Marb	BF	REA	API	TI
13.4	0.9	65.8	90.7	8.3	18.3	51.1	15.0	0.04	-0.076	0.60	121.4	68.9

CE	BW	WW	YW	MCE	Milk	MWW	Stay	Marb	BF	REA	API	TI
10.2	1.4	78.2	110.7	5.8	15.5	54.4	15.6	0.14	-0.071	0.90	117.1	73.7

49A: Bull Calf / ASA#: 4348604 / DOB: 2/28/24 / Tattoo: 2M

Sired by OMF Epic E27 (ASA#: 3317371)

Sells open and ready to breed.

MCLC TECUMSEH 29C JELLIE 51J she sells with a bull calf sired by OMF EPIC E27.

50A: Heifer Calf / ASA#: 4355228 / DOB: 4/7/24 / Tattoo: 43M

Sired by Hooks Blackhawk 50B (ASA#: 2854467)

Sells open and ready to breed.

MCLC XENA`S FENNA 202F she sells with her 3rd calf a heifer sired by HOOK`S BLACK HAWK 50B.

**51**

JENNIFER MCLAIN LINK

## MCLC TECUMCHI

BD: 9/27/16 / ASA#: 3246499 / Tattoo: 253D / 1/2 SM 1/2 AR  
Spring Cow-Calf Pair / Red / Polled

TNT GUNNER N208

MVS TECUMSEH

MVS MISS SCARLET Z16

X

BIEBER PACKER X375

BACHMAN MS CHI-PACKER ET01A

JEFFRIES MS CHINOOK Y929

CE	BW	WW	YW	MCE	Milk	MWW	Stay	Marb	BF	REA	API	TI
12.2	0.5	77.6	115.7	8.6	21.6	60.3	19.1	0.15	-0.029	0.63	128.6	74.9

51A: Bull Calf / ASA#: 4355229 / DOB: 4/14/24 / Tattoo: 49M

Sired by MCLC AFTERSHOCK 300A 228G (ASA#: 3630342)

Sells open and ready to breed.

MCLC TECUMCHI has had 6 calves. She goes back to BIEBER PACKER X375.

**52**

MCLAIN LINK CATTLE CO.

## MCLC RED REBELETTE 25D

BD: 2/25/16 / ASA#: 3630278 / Tattoo: 25D / 1/2 AR 1/4 AN 1/4 HH  
Spring Cow-Calf Pair

X

CE	BW	WW	YW	MCE	Milk	MWW	Stay	Marb	BF	REA	API	TI
13.7	-2.1	47.1	74.7	7.8	25.9	49.4	3.6	0.15	-0.010	0.04	114.4	73.7

52A: Heifer Calf / ASA#: 4348571 / DOB: 3/8/24 / Tattoo: 10M

Sired by OMF Epic E27 (ASA#: 3317371)

Sells open and ready to breed.

MCLC RED REBELETTE 25D is a three breed cross red cow 1/2 AR 1/4 AN 1/4 HH and has had 6 calves.

# MCLAIN LINK CATTLE CO. DISPERSAL SPRING COW-CALF PAIRS



53

MCLAIN LINK CATTLE CO.

## MCLC TG SMOKIE 72E

BD: 4/1/17 / ASA#: 3366060 / Tattoo: 72E / 1/2 SM 1/4 AN 1/4 CS  
Spring Cow-Calf Pair / Gray / Polled

MCM TOP GRADE 018X  
RC TOP GRADE 074B  
RC MISS PREFERRED 063W



BON VIEW NEW DESIGN 878  
MCLC SMOKIE OF 878

CE	BW	WW	YW	MCE	Milk	MWW	Stay	Marb	BF	REA	API	TI
11.0	0.5	69.3	105.1	7.1	25.5	60.1	18.6	0.44	-0.048	0.47	139.2	77.6

53A: Bull Calf / ASA#: 4348602 / DOB: 4/9/24 / Tattoo: 47M  
Sired by Mohican Bar Star Revved Up 78A (ASA#: AHA 43386234)

Sells open and ready to breed.

MCLC TG SMOKIE 72E this exotic looking grey cow is sired by the ultimate female maker RC TOP GRADE 074B and goes back to a BON VIEW NEW DESIGN 878 cow. She could be mated for club calves or used anyway to should see fit.

54

MCLAIN LINK CATTLE CO.

## MCLC EPIC COCOA KICHELLE 40K

BD: 3/18/22 / ASA#: 4024067 / Tattoo: 40K / 1/2 SM 3/8 AN 1/8 CS  
Spring Cow-Calf Pair / Gray / Polled

WS ALL-AROUND Z35  
OMF EPIC E27  
OMF TIME LESS B100



MCLC COCO MICHELLE 42C  
MCLC SMOKIE OF 878

CE	BW	WW	YW	MCE	Milk	MWW	Stay	Marb	BF	REA	API	TI
13.1	-0.5	76.7	114.0	8.4	20.6	58.9	13.5	0.31	-0.027	0.48	128.8	79.5

54A: Heifer Calf / ASA#: 4348578 / DOB: 3/24/24 / Tattoo: 28M  
Sired by OMF Epic E27 (ASA#: 3317371)

Sells open and ready to breed.

MCLC EPIC COCOA KICHELLE 40K is a grey daughter of OMF EPIC E27. She sells with a heifer calf.

55

MCLAIN LINK CATTLE CO.

## MCLC BIRTHRIGHT 72E KOKIE 21K

BD: 3/9/22 / ASA#: 4022002 / Tattoo: 21K / 1/2 SM 5/16 CS 3/16 AN  
Spring Cow-Calf Pair / Gray / Polled

W/C EXECUTIVE ORDER 8543B  
ASR BIRTHRIGHT  
ASR MS JORDAN D660



RC TOP GRADE 074B  
MCLC TG SMOKIE 72E  
MCLC SMOKIE OF 878

CE	BW	WW	YW	MCE	Milk	MWW	Stay	Marb	BF	REA	API	TI
14.0	-0.6	63.1	95.0	7.4	22.5	53.9	17.1	0.29	-0.056	0.64	131.8	72.0

55A: Heifer Calf / ASA#: 4348585 / DOB: 3/17/24 / Tattoo: 24M  
Sired by OMF Epic E27 (ASA#: 3317371)

Sells open and ready to breed.

MCLC Birthright 72E Kokie 21K is a grey daughter of ASR BIRTHRIGHT that sells with a heifer calf sired by OMF EPIC E27.

56

MCLAIN LINK CATTLE CO.

## MCLC COCO MICHELLE 42C

BD: 3/4/15 / ASA#: 3377090 / Tattoo: 42C / 3/4 AN 1/4 CS  
Spring Cow-Calf Pair / Gray / Polled



BON VIEW NEW DESIGN 878  
MCLC SMOKIE OF 878

CE	BW	WW	YW	MCE	Milk	MWW	Stay	Marb	BF	REA	API	TI
12.0	-0.3	57.6	89.9	7.2	22.5	51.2	7.4	0.42	-0.005	0.19	109.2	68.1

56A: Bull Calf / ASA#: 4352889 / DOB: 4/28/24 / Tattoo: 58M  
Sired by MCLC Trustee 48F Kelvin 31K (ASA#: 4024070)

Sells open and ready to breed.

MCLC COCO MICHELLE 42C is a grey cow that has had 8 calves.

*Bid Online!*

**DVAuction**

WWW.DVAUCTION.COM

## MCLAIN LINK CATTLE CO. HERD HEALTH

The Cattle Are Ready To go To Work!

All spring breeding animals have been vaccinated with a modified-live respiratory, vibrio, leptospirosis and a 9 way clostridial. They were treated the week of April 15th for internal and external parasites, using LongRange, Synanthic oral, a topical parasiticide and given a Multimin injection at that time.

Throughout the entire winter the entire herd has been fed a TMR ration which included a chelated mineral supplement containing the Availa 4 product. Once cows were turned to pasture this spring, the same mineral product was modified to include CTC and has been available to the animals free choice.

Fall cows and bred heifers were confirmed pregnant by Ultrasound on March 12th. They were dewormed, deloused and boosted with a Vibrio/Lepto at preg check. There are no open fall cows in the sale offering.

All spring born calves have been vaccinated with Nasalgen PMH and Calvary 9.

The fall weaned bulls and heifers were fully pre-conditioned. The mature bulls are fully vaccinated, trich tested (as needed), semen tested and ready for turnout.

Rest assured that the open cows and heifers offered are in their best physical condition and up to date on health protocols and vitamin and mineral supplementation which will enable them to step into any possible breeding scenario.



MCLAIN LINK CATTLE CO. DISPERSAL  
FALL BRED COWS



TJ SHARPER IMAGE 809U  
MATERNAL GRANDSIRE OF LOT 57



KOCH BIG TIMBER 685D  
MATERNAL GRANDSIRE OF LOT 58



**57** MCLAIN LINK CATTLE CO.  
**MCLC LONGEVITY B42 HEIDI 36H**

BD: 3/12/20 / ASA#: 3701098 / Tattoo: 36H / 5/8 SM 1/4 AN 1/8 CS  
Fall Bred Cow / Black / Polled

ASR/GLS PACESETTER U862  
ASR LONGEVITY Y184  
ASR MISS PRIMROSE M231



TJ SHARPER IMAGE 809U  
MCLC SHARPER IM B42  
MCLC HR 807

**58** MCLAIN LINK CATTLE CO.  
**MCLC CROSSBOW 5G JASMINE 11J**

BD: 3/4/21 / ASA#: 3897147 / Tattoo: 11J / 3/8 SM 19/32 AN 1/32 AR  
Fall Bred Cow / Black / Polled

KM BROKEN BOW 002  
SPRING COVE CROSSBOW  
SPRING COVE PRETTY 205



KOCH BIG TIMBER 685D  
MCLC TIMBER GIONA 5G  
TRPH MS FINALE Z208

CE	BW	WW	YW	MCE	Milk	MWW	Stay	Marb	BF	REA	API	TI
10.4	1.2	76.6	116.1	8.0	24.3	62.5	12.6	0.21	-0.051	0.78	115.7	75.4

AI'd to OMF Epic E27 (ASA# 3317371) on 12/7/23. PE to MCLC TRUSTEE 48F KELVIN 31K (ASA# 4024070) from 12/16/23 to 1/24/24. PE to MCLC TRUSTEE 39G KIMBER 39K (ASA# 4024073) from 12/16/23 to 1/24/24. Confirmed bred, natural service.  
MCLC LONGEVITY B42 HEIDI 36H is a striking good looking blaze face daughter of ASR LONGEVITY Y184 going back to a daughter of the ultimate female making bull TJ SHARPER IMAGE 809U. She is a definite sale feature and an easy pick to lead off an exceptional set of fall bred cows.

CE	BW	WW	YW	MCE	Milk	MWW	Stay	Marb	BF	REA	API	TI
16.3	-2.7	71.1	119.0	9.1	23.8	59.6	14.0	0.77	0.000	0.32	158.7	89.3

PE to MCLC Powder 32H Keen 5K (ASA# 4022003) from 12/16/23 to 1/23/24. Confirmed bred, natural service.  
MCLC CROSSBOW 5G JASMINE 11J is a daughter of SPRING COVE CROSSBOW. She is solid black and slick haired and ready to last for a long time on fescue pastures.



MCLAIN LINK CATTLE CO. DISPERSAL  
FALL BRED COWS



LOT 59

**59** MCLAIN LINK CATTLE CO.  
**MCLC BUILT RIGHT 212D GELATO 2**  
BD: 8/22/19 / ASA#: 3774763 / Tattoo: 217G / 1/2 SM 1/2 AR  
Fall Bred Cow / Hetero Black / Polled

CNS DREAM ON L186  
SVF/NJC BUILT RIGHT N48  
NJC EBONY ANTOINETTE

X

SCHULER ENDURANCE 2101Z  
MCLC ENDURANCE DAHLIA  
BD3P DURHEIM 922

CE	BW	WW	YW	MCE	Milk	MWW	Stay	Marb	BF	REA	API	TI
13.2	-0.5	57.8	87.7	7.9	18.7	47.6	17.7	0.15	-0.028	0.33	121.1	63.9

AI'd to Dikeman's Konza 13K (ASA# 4053827) on 12/7/23. PE to MCLC TRUSTEE 48F KELVIN 31K (ASA# 4024070) from 12/16/23 to 1/24/24. PE to MCLC TRUSTEE 39G KIMBER 39K (ASA# 4024073) from 12/16/23 to 1/24/24. PE to MCLC EPIC 4G KERNEL 28K (ASA# 4021995) from 12/16/23 to 1/24/24. Confirmed bred to Dikeman's Konza 13J. MCLC BUILT RIGHT 212D GELATO 2 is an own daughter of the immortal SVF/NJC BUILT RIGHT N48. She would be great to make red or black baldies with.



LOT 60

**60** MCLAIN LINK CATTLE CO.  
**MCLC MS BOULEVARD**  
BD: 3/10/17 / ASA#: 3366045 / Tattoo: 38E / 1/2 SM 1/2 AN  
Fall Bred Cow / Black / Polled

HOOK`S YELLOWSTONE 97Y  
HOOK`S BOULEVARD 41B  
HOOK`S ULTIMO 14U

X

H A IMAGE MAKER 0415  
MCLC IMAGE MAKER B92

CE	BW	WW	YW	MCE	Milk	MWW	Stay	Marb	BF	REA	API	TI
13.4	0.4	69.8	108.7	6.4	30.8	65.9	16.6	0.47	-0.029	0.48	140.3	79.3

AI'd to Hooks Blackhawk 50B (ASA# 2854467) on 12/8/23. PE to MCLC TRUSTEE 48F KELVIN 31K (ASA# 4024070) from 12/16/23 to 1/24/24. PE to MCLC TRUSTEE 39G KIMBER 39K (ASA# 4024073) from 12/16/23 to 1/24/24. Confirmed bred to Hooks Blackhawk. MCLC MS BOULEVARD this herd matron has had 7 progeny. She does it with a flawless structure and great balance. She is the kind to build a cow herd around.

**61** MCLAIN LINK CATTLE CO.  
**MCLC EPIC 216G JOLENE 224J**  
BD: 9/7/21 / ASA#: 3967408 / Tattoo: 224J / 5/8 SM 3/8 AN  
Fall Bred Cow / Black / Polled

WS ALL-AROUND Z35  
OMF EPIC E27  
OMF TIME LESS B100

X

GW-WBF SUBSTANCE 820Y  
MCLC SUBSTANCE 220 216G  
MCLC BLUE 220

CE	BW	WW	YW	MCE	Milk	MWW	Stay	Marb	BF	REA	API	TI
11.8	0.6	83.9	125.2	7.5	20.2	62.1	14.7	0.37	-0.038	0.64	133.8	84.0

AI'd to HOOK`S BOUNTY 6B (ASA# 2854458) on 11/26/23. PE to MCLC Powder 32H Keen 5K (ASA# 4022003) from 12/16/23 to 1/23/24. Confirmed bred to Hook's Bounty. MCLC EPIC 216G JOLENE 224J is a young OMF EPIC E27 daughter. She is just how Roman imagined she would be when he found Epic in the Mile High City!



LOT 61



# MCLAIN LINK CATTLE CO. DISPERSAL FALL BRED COWS

62

MCLAIN LINK CATTLE CO.

## MCLC STAR ELEMENT 225F

BD: 8/30/18 / ASA#: 3485122 / Tattoo: 225F / 1/2 SM 3/8 AN 1/8 CS  
Fall Bred Cow / Black / Polled

GW-WBF SUBSTANCE 820Y

GIBBS 3009A ELEMENT

GIBBS 9128W MABELLE N341



MCLC WINTER STAR 595



LOT 62

CE	BW	WW	YW	MCE	Milk	MWW	Stay	Marb	BF	REA	API	TI
9.8	1.6	66.8	104.4	6.7	26.7	60.0	12.1	0.39	-0.057	0.68	119.9	73.9

AI'd to OMF Epic E27 (ASA# 3317371) on 12/9/23. PE to MCLC TRUSTEE 48F KELVIN 31K (ASA# 4024070) from 12/16/23 to 1/24/24. PE to MCLC TRUSTEE 39G KIMBER 39K (ASA# 4024073) from 12/16/23 to 1/24/24. PE to MCLC EPIC 4G KERNEL 28K (ASA# 4021995) from 12/16/23 to 1/24/24. Confirmed bred to OMF Epic E27.

MCLC STAR ELEMENT 225F is a blaze face daughter with Gibbs breeding. Pay special attention to this one if you follow their program.

63

MCLAIN LINK CATTLE CO.

## MCLC BEACON ENCHANT 226E

BD: 9/13/17 / ASA#: 3418879 / Tattoo: 226E / 1/2 SM 1/2 AN  
Fall Bred Cow / Black / Polled

HOOKS SHEAR FORCE 38K

HOOK` S BEACON 56B

HOOKS ZAFIRAH 41Z



MCLC FISCHER 16A



LOT 63

CE	BW	WW	YW	MCE	Milk	MWW	Stay	Marb	BF	REA	API	TI
13.9	-2.3	64.3	99.8	9.2	28.2	60.2	14.4	0.62	0.002	0.91	147.9	83.2

AI'd to OMF Epic E27 (ASA# 3317371) on 12/8/23. PE to MCLC TRUSTEE 48F KELVIN 31K (ASA# 4024070) from 12/16/23 to 1/24/24. PE to MCLC TRUSTEE 39G KIMBER 39K (ASA# 4024073) from 12/16/23 to 1/24/24. PE to MCLC EPIC 4G KERNEL 28K (ASA# 4021995) from 12/16/23 to 1/24/24. Confirmed bred to OMF Epic E27.

MCLC BEACON ENCHANT 226E is a Beacon daughter coming with her 6th calf. She proves the value of her sire.

Watch & bid online for FREE at

**DVAuction**  
Broadcasting Real-Time Auctions

Can't make the sale? Bid from home with DV Auction's "real-time" internet bidding service!

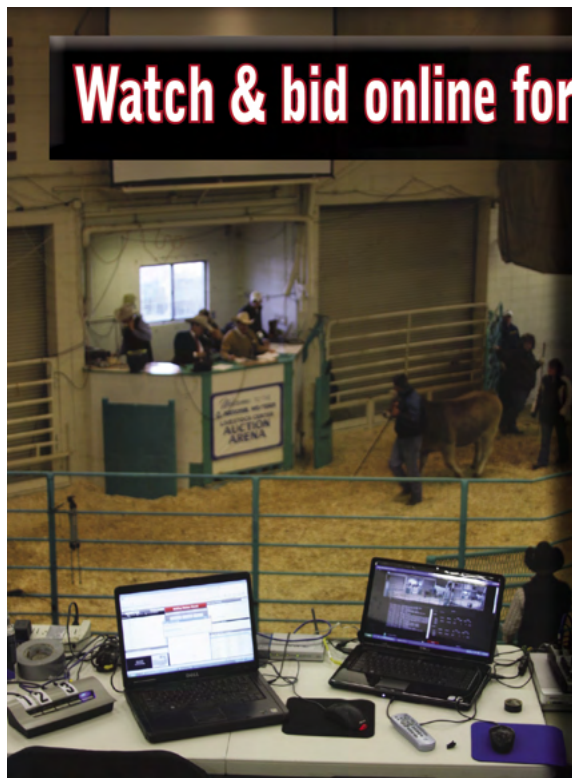
Buying online is as easy as 1, 2, 3...

1. Create an account at [www.dvauction.com](http://www.dvauction.com) under the "register" tab
2. Apply for bidding approval by clicking on the "details" tab at least 24 hours prior to the auction-a DV representative will notify you once you have been approved
3. Tune in for the sale and make your purchases!

After the sale, contact the sale manager or owner to arrange transportation and payment. **High speed internet** is required for successful bidding-be sure to check the lag-time monitor in the top left corner to ensure real-time broadcasts.

**Proxy Bidding**-if you can't make time to watch the sale, register a proxy bid and let our system represent your bid while you're away. Look for the "proxy bid" tab on the auction listing, and fill in your maximum bids. We'll handle the rest!

**Having troubles?** During the auction, you can type a message to the operator at any time for assistance. Our full-time support team can also always be reached at (402) 474-5557.



**DVAuction**  
Broadcasting Real-Time Auctions

Full Service Livestock Marketing

Video - Photography - The Stock Exchange - Ring Service - Banner Ads - Onsite Viewing Service



MCLAIN LINK CATTLE CO. DISPERSAL  
FALL BRED COWS



AI'd to Sitz Stellar 726D (AAA# 18397542) on 12/7/23. PE to MCLC TRUSTEE 48F KELVIN 31K (ASA# 4024070) from 12/16/23 to 1/24/24. PE to MCLC TRUSTEE 39G KIMBER 39K (ASA# 4024073) from 12/16/23 to 1/24/24. PE to MCLC EPIC 4G KERNEL 28K (ASA# 4021995) from 12/16/23 to 1/24/24. Confirmed bred to Sitz Stellar 726D. MCLC Impressive Dot B120 is a donor quality Angus female. Her sire Connealy Impression stamps them with quality and on the bottom side of her pedigree she combines Leachman Right Time & G A R Sleep Easy 1009.

64 MCLAIN LINK CATTLE CO.  
**MCLC IMPRESSIVE DOT B120**  
BD: 10/24/14 / AAA#: 18757250 / Tattoo: B120 / PB AN  
Fall Bred Cow / Black / Polled

CONNEALY REFLECTION	X	LEACHMAN RIGHT TIME
CONNEALY IMPRESSION		3T/ 4K EMERALD TIME 322 RT
PEARL PAMMY OF CONANGA 194		G A R SLEEP EASY 2177

CED	BW	WW	YW	CEM	Milk	MW	Doc	Marb	RE	Fat	\$W	\$C
+2	+2.9	+62	+100	+10	+26	+60	+10	+15	+65	-.020	+57	+213



65 MCLAIN LINK CATTLE CO.  
**MCLC EVER PROGRAM BOW 201F**  
BD: 8/16/18 / AAA#: 19453788 / Tattoo: 201F / PB AN  
Fall Bred Cow / Black / Polled

SUMMITCREST COMPLETE 1P55	X	HA PROGRAM 5652
KM BROKEN BOW 002		MCLC EVER PROGRAM 215D
SUMMITCREST PRINCESS 0P12		WHITE STAR EVERELDA 102A

CED	BW	WW	YW	CEM	Milk	MW	Doc	Marb	RE	Fat	\$W	\$C
I+9	I-3	I+58	I+99	I+12	I+26	I+48	I+10	I+.72	I+.54	I-.021	+61	+243

AI'd to Hooks Blackhawk 50B (ASA# 2854467) on 12/8/23. PE to MCLC TRUSTEE 48F KELVIN 31K (ASA# 4024070) from 12/16/23 to 1/24/24. PE to MCLC TRUSTEE 39G KIMBER 39K (ASA# 4024073) from 12/16/23 to 1/24/24. PE to MCLC EPIC 4G KERNEL 28K (ASA# 4021995) from 12/16/23 to 1/24/24. Confirmed bred to Hooks Blackhawk. MCLC Program Bow 201F is another nice Angus cow. Look her up on sale day.



# MCLAIN LINK CATTLE CO. DISPERSAL FALL BRED COWS

66

MCLAIN LINK CATTLE CO.

## MCLC EVER PROGRAM 215D

BD: 9/4/16 / AAA#: 18995062 / Tattoo: 215D / PB AN  
Fall Bred Cow / Black / Polled

HA FUTURE DIRECTION 3540  
HA PROGRAM 5652  
HA BLACKCAP LADY 2782



SITZ UPWARD 307R  
WHITE STAR EVERELDA 102A  
SANDPOINT EVERELDA 6849

CED	BW	WW	YW	CEM	Milk	MW	Doc	Marb	RE	Fat	\$W	\$C
+7	+1.0	+56	+96	+11	+27	+37	+6	+57	+38	-.013	+59	+242

AI'd to KCF Bennett Exponential (AAA# 19507801) on 11/28/23. PE to MCLC TRUSTEE 48F KELVIN 31K (ASA# 4024070) from 12/16/23 to 1/24/24. PE to MCLC TRUSTEE 39G KIMBER 39K (ASA# 4024073) from 12/16/23 to 1/24/24. PE to MCLC EPIC 4G KERNEL 28K (ASA# 4021995) from 12/16/23 to 1/24/24. Confirmed bred to KFC Bennet Exponential. MCLC Ever Program 215D stems back to a super solid cow family Everelda.



KCF BENNETT EXPONENTIAL - SERVICE SIRE OF LOT 66

67

MCLAIN LINK CATTLE CO.

## MCLC AFTERSHOCK F43A 261G

BD: 9/28/19 / ASA#: 3630344 / Tattoo: 261G / 1/2 SM 3/8 AR 1/8 MX  
Fall Bred Cow / Hetero Black / Polled

HOOK`S YELLOWSTONE 97Y  
CLRS AFTER SHOCK 604 A  
HOOKS SARITA 4S



BIEBER REAL MCCOY Y124  
BACHMAN MS Y124-YELL11  
BACHMAN HRA492-CB38

CE	BW	WW	YW	MCE	Milk	MWW	Stay	Marb	BF	REA	API	TI
12.5	-0.1	72.1	105.9	6.8	18.1	54.0	11.8	0.23	-0.039	0.40	117.2	73.7

AI'd to OMF Epic E27 (ASA# 3317371) on 12/9/23. PE to MCLC TRUSTEE 48F KELVIN 31K (ASA# 4024070) from 12/16/23 to 1/24/24. PE to MCLC TRUSTEE 39G KIMBER 39K (ASA# 4024073) from 12/16/23 to 1/24/24. PE to MCLC EPIC 4G KERNEL 28K (ASA# 4021995) from 12/16/23 to 1/24/24. Confirmed bred to OMF Epic E27. MCLC AFTERSHOCK F43A 261G you have to love her brockle face. Females like her make you excited about checking your cows on green grass.



LOT 67



LOT 68

68

MCLAIN LINK CATTLE CO.

## MCLC BOULEVARD EVIE 227E

BD: 9/13/17 / ASA#: 3418881 / Tattoo: 227E / 1/2 SM 1/2 AN  
Fall Bred Cow / Black / Homo Polled

HOOK`S YELLOWSTONE 97Y  
HOOK`S BOULEVARD 41B  
HOOK`S ULTIMO 14U



SITZ UPWARD 307R  
WHITE STAR EVERELDA 102A  
SANDPOINT EVERELDA 6849

CE	BW	WW	YW	MCE	Milk	MWW	Stay	Marb	BF	REA	API	TI
14.1	0.9	70.4	117.6	6.9	27.0	62.2	17.2	0.68	-0.030	0.59	154.8	84.6

AI'd to OMF Epic E27 (ASA# 3317371) on 12/9/23. PE to MCLC TRUSTEE 48F KELVIN 31K (ASA# 4024070) from 12/16/23 to 1/24/24. PE to MCLC TRUSTEE 39G KIMBER 39K (ASA# 4024073) from 12/16/23 to 1/24/24. PE to MCLC EPIC 4G KERNEL 28K (ASA# 4021995) from 12/16/23 to 1/24/24. Confirmed bred to OMF Epic E27. MCLC BOULEVARD EVIE 227E is another complete cow. She is homo polled.

# MCLAIN LINK CATTLE CO. DISPERSAL FALL BRED COWS

69

MCLAIN LINK CATTLE CO.

## MCLC EPIC 210G JILL 209J

BD: 9/1/21 / ASA#: 3967392 / Tattoo: 209J / PB SM  
Fall Bred Cow / Black / Polled

WS ALL-AROUND Z35

OMF EPIC E27

OMF TIME LESS B100



SVF/NJC BUILT RIGHT N48

MCLC BUILT RIGHT GENIA 210G

MCLC DENIA

CE	BW	WW	YW	MCE	Milk	MWW	Stay	Marb	BF	REA	API	TI
----	----	----	----	-----	------	-----	------	------	----	-----	-----	----

13.0 -0.3 77.6 113.2 8.1 16.6 55.3 18.1 0.14 -0.063 0.75 140.5 80.2

AI'd to HOOK'S BOUNTY 6B (ASA# 2854458) on 11/28/23. PE to MCLC Powder 32H Keen 5K (ASA# 4022003) from 12/16/23 to 1/23/24. Confirmed bred to Hook's Bounty.

MCLC EPIC 210G JILL 209J is sired by OMF EPIC E27 out of a SVF/NJC BUILT RIGHT N48 cow. What more could you ask for?

70

MCLAIN LINK CATTLE CO.

## MCLC EPIC 209G JAQUELINE 229J

BD: 9/8/21 / ASA#: 3967383 / Tattoo: 229J / 5/8 SM 3/8 AN  
Fall Bred Cow / Black / Polled

WS ALL-AROUND Z35

OMF EPIC E27

OMF TIME LESS B100



MILL BAR HICKOK 7242

MCLC HICKOK GRETCHEN 209G

MCLC BEACON ELLIE 229E

CE	BW	WW	YW	MCE	Milk	MWW	Stay	Marb	BF	REA	API	TI
----	----	----	----	-----	------	-----	------	------	----	-----	-----	----

14.0 0.0 85.0 129.3 7.8 22.0 65.0 17.4 0.42 -0.017 0.73 146.8 87.2

AI'd to HOOK'S BOUNTY 6B (ASA# 2854458) on 11/26/23. PE to MCLC Powder 32H Keen 5K (ASA# 4022003) from 12/16/23 to 1/23/24. Confirmed bred to Hook's Bounty.

MCLC EPIC 209G JAQUELINE 229J this Epic daughter goes back to HOOK'S BEACON 56B and is in a Sim Angus package. She will last forever and be an awesome cow for years.

71

MCLAIN LINK CATTLE CO.

## MCLC HICKOK GLISTEN 205G

BD: 8/17/19 / ASA#: 3630308 / Tattoo: 205G / 1/4 SM 3/4 AN  
Fall Bred Cow / Black / Homo Polled

CONNELLY CONSENSUS 7229

MILL BAR HICKOK 7242

MILL BAR BEMINDFUL MAID 6304



CLINES BLACK GOLD 443 TEN X

MCLC GOLD ECLAIRE 245E

HRM MS TUITION 2226

CE	BW	WW	YW	MCE	Milk	MWW	Stay	Marb	BF	REA	API	TI
----	----	----	----	-----	------	-----	------	------	----	-----	-----	----

17.0 -0.8 77.3 127.3 7.0 29.4 68.5 14.5 0.67 0.015 0.40 153.6 88.5

AI'd to OMF Epic E27 (ASA# 3317371) on 12/9/23. PE to MCLC TRUSTEE 48F KELVIN 31K (ASA# 4024070) from 12/16/23 to 1/24/24. PE to MCLC TRUSTEE 39G KIMBER 39K (ASA# 4024073) from 12/16/23 to 1/24/24. PE to MCLC EPIC 4G KERNEL 28K (ASA# 4021995) from 12/16/23 to 1/24/24. Confirmed bred to OMF Epic E27.

MCLC HICKOK GLISTEN 205G is homo polled. She has 3 recorded progeny.

72

MCLAIN LINK CATTLE CO.

## MCLC HICKOK GILDA 207G

BD: 8/20/19 / ASA#: 3630317 / Tattoo: 207G / 1/4 SM 1/2 AN 1/4 CS  
Fall Bred Cow / Black / Polled

CONNELLY CONSENSUS 7229

MILL BAR HICKOK 7242

MILL BAR BEMINDFUL MAID 6304



HOOK'S BEACON 56B

MCLC BEACON ELVIRA 204E

MCLC MONTANA 102B

CE	BW	WW	YW	MCE	Milk	MWW	Stay	Marb	BF	REA	API	TI
----	----	----	----	-----	------	-----	------	------	----	-----	-----	----

14.4 -0.3 77.8 123.9 6.5 27.2 66.7 15.7 0.50 -0.015 0.78 143.4 84.4

AI'd to OMF Epic E27 (ASA# 3317371) on 12/8/23. PE to MCLC TRUSTEE 48F KELVIN 31K (ASA# 4024070) from 12/16/23 to 1/24/24. PE to MCLC TRUSTEE 39G KIMBER 39K (ASA# 4024073) from 12/16/23 to 1/24/24. PE to MCLC EPIC 4G KERNEL 28K (ASA# 4021995) from 12/16/23 to 1/24/24. Confirmed bred, natural service, with a heifer calf.

MCLC HICKOK GILDA 207G is a MILL BAR HICKOK 7242 back to a HOOK'S BEACON 56B. She has a very balanced and maternal pedigree.

73

MCLAIN LINK CATTLE CO.

## MCLC HICKOK GRETCHEN 209G

BD: 8/21/19 / ASA#: 3630319 / Tattoo: 209G / 1/4 SM 3/4 AN  
Fall Bred Cow / Black / Polled

CONNELLY CONSENSUS 7229

MILL BAR HICKOK 7242

MILL BAR BEMINDFUL MAID 6304



HOOK'S BEACON 56B

MCLC BEACON ELLIE 229E

MCLC FISCHER 31A

CE	BW	WW	YW	MCE	Milk	MWW	Stay	Marb	BF	REA	API	TI
----	----	----	----	-----	------	-----	------	------	----	-----	-----	----

14.7 0.2 83.0 132.5 6.8 31.5 73.9 15.2 0.64 0.016 0.77 150.6 90.1

AI'd to Clemson Elite 41J (ASA# 4068318) on 12/8/23. PE to MCLC TRUSTEE 48F KELVIN 31K (ASA# 4024070) from 12/16/23 to 1/24/24. PE to MCLC TRUSTEE 39G KIMBER 39K (ASA# 4024073) from 12/16/23 to 1/24/24. PE to MCLC EPIC 4G KERNEL 28K (ASA# 4021995) from 12/16/23 to 1/24/24. Confirmed bred, natural service, with a bull calf.

MCLC HICKOK GRETCHEN 209G another MILL BAR HICKOK 7242 back to a HOOK'S BEACON 56B with a very balanced and maternal pedigree.

74

MCLAIN LINK CATTLE CO.

## MCLC HICKOK GIADA 208G

BD: 8/21/19 / ASA#: 3630316 / Tattoo: 208G / 1/4 SM 11/16 AN 1/16 CS  
Fall Bred Cow / Black / Polled

CONNELLY CONSENSUS 7229

MILL BAR HICKOK 7242

MILL BAR BEMINDFUL MAID 6304



SVF/NJC BUILT RIGHT N48

MCLC BRIGHT ELEANOR 203E

MCLC HR 823

CE	BW	WW	YW	MCE	Milk	MWW	Stay	Marb	BF	REA	API	TI
----	----	----	----	-----	------	-----	------	------	----	-----	-----	----

14.8 0.2 72.3 114.5 6.5 26.2 63.1 14.9 0.40 -0.008 0.50 132.5 77.3

AI'd to OMF Epic E27 (ASA# 3317371) on 12/8/23. PE to MCLC TRUSTEE 48F KELVIN 31K (ASA# 4024070) from 12/16/23 to 1/24/24. PE to MCLC TRUSTEE 39G KIMBER 39K (ASA# 4024073) from 12/16/23 to 1/24/24. PE to MCLC EPIC 4G KERNEL 28K (ASA# 4021995) from 12/16/23 to 1/24/24. Confirmed bred to OMF Epic E27.

MCLC HICKOK GIADA 208G is sired by MILL BAR HICKOK 7242 and back to a SVF/NJC BUILT RIGHT N48 cow. She will be around for a long time.

75

MCLAIN LINK CATTLE CO.

## MCLC HICKOK GLENDA 225G

BD: 8/26/19 / ASA#: 3630307 / Tattoo: 225G / 1/4 SM 3/4 AN  
Fall Bred Cow / Black / Polled

CONNELLY CONSENSUS 7229

MILL BAR HICKOK 7242

MILL BAR BEMINDFUL MAID 6304



HOOK'S BOULEVARD 41B

MCLC BOUL EMPRESS 235E

MCLC BLUE 220

CE	BW	WW	YW	MCE	Milk	MWW	Stay	Marb	BF	REA	API	TI
----	----	----	----	-----	------	-----	------	------	----	-----	-----	----

12.9 0.0 70.7 115.2 4.6 27.4 63.5 16.0 0.58 -0.001 0.52 142.6 81.0

AI'd to HOOK'S BOUNTY 6B (ASA# 2854458) on 11/28/23. PE to MCLC TRUSTEE 48F KELVIN 31K (ASA# 4024070) from 12/16/23 to 1/24/24. PE to MCLC TRUSTEE 39G KIMBER 39K (ASA# 4024073) from 12/16/23 to 1/24/24. PE to MCLC EPIC 4G KERNEL 28K (ASA# 4021995) from 12/16/23 to 1/24/24. Confirmed bred to Hook's Bounty.

MILL BAR HICKOK 7242 back to HOOK'S BOULEVARD 41B. She has had 3 calves.

76

MCLAIN LINK CATTLE CO.

## MCLC SUBSTANCE 220 216G

BD: 8/22/19 / ASA#: 3630321 / Tattoo: 216G / 3/8 SM 5/8 AN  
Fall Bred Cow / Black / Polled

GW PREMIUM BEEF 021TS

GW-WBF SUBSTANCE 820Y

GW MISS MATERNAL 558P



MCLC BLUE 220

CE	BW	WW	YW	MCE	Milk	MWW	Stay	Marb	BF	REA	API	TI
----	----	----	----	-----	------	-----	------	------	----	-----	-----	----

10.8 0.9 74.9 116.0 6.1 21.8 59.1 9.9 0.53 -0.026 0.56 124.4 80.4

AI'd to OMF Epic E27 (ASA# 3317371) on 12/8/23. PE to MCLC TRUSTEE 48F KELVIN 31K (ASA# 4024070) from 12/16/23 to 1/24/24. PE to MCLC TRUSTEE 39G KIMBER 39K (ASA# 4024073) from 12/16/23 to 1/24/24. PE to MCLC EPIC 4G KERNEL 28K (ASA# 4021995) from 12/16/23 to 1/24/24. Confirmed bred, natural service, with a bull calf.

MCLC SUBSTANCE 220 216G has had 3 calves.



# MCLAIN LINK CATTLE CO. DISPERSAL FALL BRED COWS

## 77

### MCLC COYBOY 209F JACKIE222J

MCLAIN LINK CATTLE CO.

BD: 9/7/21 / ASA#: 3967387 / Tattoo: 222J / 5/8 SM 3/8 AN  
Fall Bred Cow / Black / Polled

CCR COWBOY CUT 5048Z  
CCR 707 COWBOY 6055B  
S D S PRINCESS 707T



GIBBS 3009A ELEMENT  
MCLC ELEMENT FANCY 209F  
MCLC MS BUILT R B110

CE	BW	WW	YW	MCE	Milk	MWW	Stay	Marb	BF	REA	API	TI
12.5	1.3	81.1	126.5	8.2	28.5	69.2	17.9	0.37	-0.049	0.71	140.2	83.0

*AI'd to HOOK`S BOUNTY 6B (ASA# 2854458) on 12/6/23. PE to MCLC Powder 32H Keen 5K (ASA# 4022003) from 12/16/23 to 1/23/24. Confirmed bred, natural service.*  
MCLC COYBOY 209F JACKIE222J is out of a GIBBS 3009A ELEMENT x SVF/NJC BUILT RIGHT N48 cow. She has her whole life ahead of her.

## 78

### MCLC AFTERSHOCK G78 GYRTLE 233

MCLAIN LINK CATTLE CO.

BD: 8/28/19 / ASA#: 3630333 / Tattoo: 233G / 1/2 SM 3/8 AN 1/8 CS  
Fall Bred Cow / Black / Polled

HOOK`S YELLOWSTONE 97Y  
CLRS AFTER SHOCK 604 A  
HOOKS SARITA 4S



MCLC WINTER GREEN 78

CE	BW	WW	YW	MCE	Milk	MWW	Stay	Marb	BF	REA	API	TI
13.7	-1.4	58.2	87.2	5.6	12.4	41.4	8.7	0.24	-0.043	0.38	110.4	66.9

*AI'd to OMF Epic E27 (ASA# 3317371) on 12/9/23. PE to MCLC TRUSTEE 48F KELVIN 31K (ASA# 4024070) from 12/16/23 to 1/24/24. PE to MCLC TRUSTEE 39G KIMBER 39K (ASA# 4024073) from 12/16/23 to 1/24/24. PE to MCLC EPIC 4G KERNEL 28K (ASA# 4021995) from 12/16/23 to 1/24/24. Confirmed bred to OMF Epic E27.*  
MCLC AFTERSHOCK G78 GYRTLE 233 has had 3 calves.

## 79

### MCLC IMAGE STAR GLEAM 224G

MCLAIN LINK CATTLE CO.

BD: 9/7/19 / ASA#: 3630313 / Tattoo: 244G / 1/4 SM 11/16 AN 1/16 CS  
Fall Bred Cow / Black / Polled

HERO 6267 OF R R 2418  
H A IMAGE MAKER 0415  
H A RITO BLACKCAP 9038



HOOK`S BEACON 56B  
MCLC STAR`S BEACON 223E  
MCLC WINTER STAR 595

CE	BW	WW	YW	MCE	Milk	MWW	Stay	Marb	BF	REA	API	TI
14.2	-0.7	71.7	109.6	8.0	33.9	69.9	15.6	0.44	0.007	0.48	135.7	79.1

*AI'd to OMF Epic E27 (ASA# 3317371) on 12/9/23. PE to MCLC TRUSTEE 48F KELVIN 31K (ASA# 4024070) from 12/16/23 to 1/24/24. PE to MCLC TRUSTEE 39G KIMBER 39K (ASA# 4024073) from 12/16/23 to 1/24/24. PE to MCLC EPIC 4G KERNEL 28K (ASA# 4021995) from 12/16/23 to 1/24/24. Confirmed bred to OMF Epic E27.*  
MCLC IMAGE STAR GLEAM 224G this low percentage Simmental cow goes back to HOOK`S BEACON 56B. She has had 3 calves.

## 80

### MCLC BOUL EMERALD 453B

MCLAIN LINK CATTLE CO.

BD: 9/5/17 / ASA#: 3418876 / Tattoo: 214E / 1/2 SM 1/4 AN 1/4 CS  
Fall Bred Cow / Black / Polled

HOOK`S YELLOWSTONE 97Y  
HOOK`S BOULEVARD 41B  
HOOK`S ULTIMO 14U



MCLC MONTANA 453B

CE	BW	WW	YW	MCE	Milk	MWW	Stay	Marb	BF	REA	API	TI
12.3	0.9	64.1	98.7	5.8	23.7	55.6	12.1	0.39	-0.061	0.55	122.5	72.9

*AI'd to OMF Epic E27 (ASA# 3317371) on 12/9/23. PE to MCLC TRUSTEE 48F KELVIN 31K (ASA# 4024070) from 12/16/23 to 1/24/24. PE to MCLC TRUSTEE 39G KIMBER 39K (ASA# 4024073) from 12/16/23 to 1/24/24. PE to MCLC EPIC 4G KERNEL 28K (ASA# 4021995) from 12/16/23 to 1/24/24. Confirmed bred to OMF Epic E27.*  
MCLC BOUL EMERALD 453B is sired by HOOK`S BOULEVARD 41B. She's been a great producer and has had 5 calves.

## 81

### MCLC STAR`S BEACON 223E

MCLAIN LINK CATTLE CO.

BD: 9/9/17 / ASA#: 3418877 / Tattoo: 223E / 1/2 SM 3/8 AN 1/8 CS  
Fall Bred Cow / Black / Polled

HOOKS SHEAR FORCE 38K  
HOOK`S BEACON 56B  
HOOKS ZAFIRAH 41Z



MCLC WINTER STAR 595

CE	BW	WW	YW	MCE	Milk	MWW	Stay	Marb	BF	REA	API	TI
13.4	-1.2	60.7	92.8	8.5	23.1	53.4	15.5	0.55	-0.014	0.89	142.0	77.4

*AI'd to OMF Epic E27 (ASA# 3317371) on 12/7/23. PE to MCLC TRUSTEE 48F KELVIN 31K (ASA# 4024070) from 12/16/23 to 1/24/24. PE to MCLC TRUSTEE 39G KIMBER 39K (ASA# 4024073) from 12/16/23 to 1/24/24. PE to MCLC EPIC 4G KERNEL 28K (ASA# 4021995) from 12/16/23 to 1/24/24. Confirmed bred to OMF Epic E27.*  
MCLC STAR`S BEACON 223E is a HOOK`S BEACON 56B sired cow with 5 calves.

## 82

### MCLC BOUL EMPRESS 235E

MCLAIN LINK CATTLE CO.

BD: 9/16/17 / ASA#: 3418887 / Tattoo: 235E / 1/2 SM 1/2 AN  
Fall Bred Cow / Black / Polled

HOOK`S YELLOWSTONE 97Y  
HOOK`S BOULEVARD 41B  
HOOK`S ULTIMO 14U



MCLC BLUE 220

CE	BW	WW	YW	MCE	Milk	MWW	Stay	Marb	BF	REA	API	TI
11.7	-0.2	52.0	83.5	5.7	21.3	47.2	12.8	0.52	-0.031	0.48	127.5	69.5

*PE to MCLC TRUSTEE 48F KELVIN 31K (ASA# 4024070) from 12/16/23 to 1/24/24. PE to MCLC TRUSTEE 39G KIMBER 39K (ASA# 4024073) from 12/16/23 to 1/24/24. PE to MCLC EPIC 4G KERNEL 28K (ASA# 4021995) from 12/16/23 to 1/24/24.*  
MCLC BOUL EMPRESS 235E has had 5 calves.

## 83

### MCLC PREFERRED GOLD STAR

MCLAIN LINK CATTLE CO.

BD: 4/1/16 / ASA#: 3253223 / Tattoo: 130D / 1/2 SM 1/2 AN  
Fall Bred Cow / Black / Polled

A A R TEN X 7008 SA  
CLINES BLACK GOLD 443 TEN X  
CLINES PRIDE 243 443 FA



HPF/BORNE HEZA STAR Y037  
RL4 PREFERRED STAR 491B  
SVR S691

CE	BW	WW	YW	MCE	Milk	MWW	Stay	Marb	BF	REA	API	TI
16.5	0.3	67.0	110.1	9.5	26.7	59.1	13.6	0.55	-0.021	0.35	142.7	80.1

*AI'd to OMF Epic E27 (ASA# 3317371) on 12/9/23. PE to MCLC TRUSTEE 48F KELVIN 31K (ASA# 4024070) from 12/16/23 to 1/24/24. PE to MCLC TRUSTEE 39G KIMBER 39K (ASA# 4024073) from 12/16/23 to 1/24/24. Confirmed bred to OMF Epic E27.*  
MCLC PREFERRED GOLD STAR goes back to SVF SHEZA STAR S803 and SRS J914 PREFERRED BEEF. She has had 5 calves.

## 84

### BACHMAN X390-911A

MCLAIN LINK CATTLE CO.

BD: 7/8/13 / ASA#: 3223144 / Tattoo: 911A / 1/2 AR 1/2 MX  
Fall Bred Cow / Red / Polled

BIEBER MAKIN HAY 9913  
BIEBER MAKIN HAY X390  
BIEBER ERICA DATELINE 10223



CE	BW	WW	YW	MCE	Milk	MWW	Stay	Marb	BF	REA	API	TI
14.8	-3.2	53.0	79.9	9.6	9.8	36.2	8.1	0.36	0.029	0.03	139.5	81.5

*AI'd to OMF Epic E27 (ASA# 3317371) on 12/9/23. PE to MCLC TRUSTEE 48F KELVIN 31K (ASA# 4024070) from 12/16/23 to 1/24/24. PE to MCLC TRUSTEE 39G KIMBER 39K (ASA# 4024073) from 12/16/23 to 1/24/24. PE to MCLC EPIC 4G KERNEL 28K (ASA# 4021995) from 12/16/23 to 1/24/24. Confirmed bred, natural service.*  
BACHMAN X390-911A has had 7 calves.

# MCLAIN LINK CATTLE CO. DISPERSAL FALL BRED COWS



**LOT 85**

**85**

MCLAIN LINK CATTLE CO.

## MCLC AGNES FANFAIR 203F

BD: 8/20/18 / ASA#: 3485142 / Tattoo: 203F / 1/2 SM 1/2 AR  
Fall Bred Cow / Red / Homo Polled

R PLUS HARD ROCK 145X  
ELLINGSON COMPLETE A358  
ELLINGSON MS AMIGO X5



GP WALLACE 016  
BIEBER DURHEIM 300A  
BD3P DURHEIM 612

CE	BW	WW	YW	MCE	Milk	MWW	Stay	Marb	BF	REA	API	TI
11.2	0.2	70.7	104.8	7.3	11.6	46.9	14.4	0.03	-0.035	0.44	109.1	67.0

AI'd to DMCC Hitman 116G (ASA# 3617255) on 12/8/23. PE to MCLC TRUSTEE 48F KELVIN 31K (ASA# 4024070) from 12/16/23 to 1/24/24. PE to MCLC TRUSTEE 39G KIMBER 39K (ASA# 4024073) from 12/16/23 to 1/24/24. PE to MCLC EPIC 4G KERNEL 28K (ASA# 4021995) from 12/16/23 to 1/24/24. Confirmed bred to DMCC Hitman 116G. MCLC AGNES FANFAIR 203F might be the red cow you've been waiting for. She has a perfectly placed white star on her head. She is outcross on the Simmental side and goes back to BIEBER on the Red Angus side of her pedigree. She's had 4 calves and would be a perfect candidate to flush and make red Sim Angus calves with the much sought after baldy face.



**LOT 86**



**LOT 87**

**86**

MCLAIN LINK CATTLE CO.

## MCLC MOON HILDA 205H

BD: 9/6/20 / ASA#: 3784221 / Tattoo: 205H / 3/4 SM 1/4 AR  
Fall Bred Cow / Red / Polled

W/C EXECUTIVE ORDER 8543B  
WS RED MOON D76  
DCR MS MOONSHINE B38



WS BEEF MAKER R13  
111 BD3P  
BD3P DURHEIM 562

CE	BW	WW	YW	MCE	Milk	MWW	Stay	Marb	BF	REA	API	TI
14.6	-1.9	67.8	97.4	6.3	28.6	62.5	17.3	0.24	-0.061	0.74	133.5	75.7

AI'd to OMF Epic E27 (ASA# 3317371) on 12/7/23. PE to MCLC TRUSTEE 48F KELVIN 31K (ASA# 4024070) from 12/16/23 to 1/24/24. PE to MCLC TRUSTEE 39G KIMBER 39K (ASA# 4024073) from 12/16/23 to 1/24/24. PE to MCLC EPIC 4G KERNEL 28K (ASA# 4021995) from 12/16/23 to 1/24/24. Confirmed bred to OMF Epic E27.

MCLC MOON HILDA 205H is a really nice made 3/4 Simmental who would make a great red flush cow and would work with many of the power Simmental bulls on the market. She is a young cow with her whole life ahead of her. She needs to go to a serious breeder! Check out her powerful heifer sired by Hooks Bounty selling as Lot 123!

**87**

MCLAIN LINK CATTLE CO.

## MCLC OSCAR X28 224F 224H

BD: 9/20/20 / ASA#: 3784216 / Tattoo: 224H / 1/4 SM 5/8 AR 1/8 MX  
Fall Bred Cow / Red / Polled

RED CROWFOOT OLE`S OSCAR  
FEDDES OSCAR X28  
FEDDES SLEEK 806



CDI MAVERICK 335B  
MCLC MAV FANGO 224F  
BACHMAN Y124-R570

CE	BW	WW	YW	MCE	Milk	MWW	Stay	Marb	BF	REA	API	TI
13.5	-1.7	74.1	117.6	7.8	32.0	68.9	12.6	0.53	-0.004	0.31	137.5	84.0

AI'd to Dikeman's Konza 13K (ASA# 4053827) on 12/7/23. PE to MCLC TRUSTEE 48F KELVIN 31K (ASA# 4024070) from 12/16/23 to 1/24/24. PE to MCLC TRUSTEE 39G KIMBER 39K (ASA# 4024073) from 12/16/23 to 1/24/24. PE to MCLC EPIC 4G KERNEL 28K (ASA# 4021995) from 12/16/23 to 1/24/24. Confirmed bred to Dikeman's Konza 13J. MCLC OSCAR X28 224F 224H she is a low percentage Simmental with a maternal look.



# MCLAIN LINK CATTLE CO. DISPERSAL FALL BRED COWS

**88**

MCLAIN LINK CATTLE CO.

## MCLC MAV FANGO 224F

BD: 8/30/18 / ASA#: 3485124 / Tattoo: 224F / 1/2 SM 1/4 AR 1/4 MX  
Fall Bred Cow / Red / Polled

HOOK`S XPECTION 36X  
CDI MAVERICK 335B  
CDI MS RED IRON 7Z



BIEBER REAL MCCOY Y124  
BACHMAN Y124-RS70



**LOT 88**

CE	BW	WW	YW	MCE	Milk	MWW	Stay	Marb	BF	REA	API	TI
11.9	-0.1	73.7	110.2	7.3	24.8	61.5	13.7	0.38	-0.033	0.70	129.8	79.4

*AI'd to HOOK`S BOUNTY 6B (ASA# 2854458) on 11/28/23. PE to MCLC Powder 32H Keen 5K (ASA# 4022003) from 12/16/23 to 1/23/24. Confirmed bred to Hook's Bounty.*

MCLC MAV FANGO 224F is a big stout power cow. She has had 4 calves.

**89**

MCLAIN LINK CATTLE CO.

## MCLC DEST PRIME 226F

BD: 8/30/18 / ASA#: 3485126 / Tattoo: 226F / 3/4 SM 1/8 CS 1/16 AN 1/16 GV  
Fall Bred Cow / Red / Polled

WS BEEF KING W107  
WS PRIME BEEF Z8  
HSF MISS SKY 87U



MR ISHEE RED DENSITY  
MCLC DESTINY  
MCLC HR Y37



**LOT 89**

CE	BW	WW	YW	MCE	Milk	MWW	Stay	Marb	BF	REA	API	TI
13.3	0.7	75.8	112.7	7.5	23.8	61.6	13.8	0.33	-0.076	0.85	140.9	83.8

*AI'd to OMF Epic E27 (ASA# 3317371) on 12/7/23. PE to MCLC Powder 32H Keen 5K (ASA# 4022003) from 12/16/23 to 1/23/24. Confirmed bred to OMF Epic E27.*

MCLC DEST PRIME 226F is a red WS PRIME BEEF Z8 daughter has had 5 calves.

**90**

MCLAIN LINK CATTLE CO.

## MCLC ZENITH`S DARLA

BD: 9/9/16 / ASA#: 3246498 / Tattoo: 228D / 1/2 SM 3/8 AR 1/8 MX  
Fall Bred Cow / Red / Polled

GW RED COAT 099TS  
WS ZENITH Z55  
HSF MISS SKY 87U



BIEBER REAL MCCOY Y124  
BACHMAN MS Y124-YELL11  
BACHMAN HRA492-CB38



**LOT 90**

CE	BW	WW	YW	MCE	Milk	MWW	Stay	Marb	BF	REA	API	TI
10.4	0.9	75.3	115.3	7.0	15.7	53.3	16.7	0.27	-0.052	0.60	127.1	75.5

*PE to MCLC TRUSTEE 48F KELVIN 31K (ASA# 4024070) from 12/16/23 to 1/24/24. PE to MCLC TRUSTEE 39G KIMBER 39K (ASA# 4024073) from 12/16/23 to 1/24/24. PE to MCLC EPIC 4G KERNEL 28K (ASA# 4021995) from 12/16/23 to 1/24/24.*

MCLC ZENITH`S DARLA has been a long time producer and has had 6 calves.

**91**

MCLAIN LINK CATTLE CO.

## MCLC BRIGHT 213E JUICE 218J

BD: 9/5/21 / ASA#: 3967423 / Tattoo: 218J / 1/2 SM 1/2 CS  
Fall Bred Cow / Red / Polled

W/C EXECUTIVE ORDER 8543B  
ASR BIRTHRIGHT  
ASR MS JORDAN D660



MVS TECUMSEH  
MCLC JULIE`S RED LEGACY EGRIT

**92**

MCLAIN LINK CATTLE CO.

## MCLC BRIGHT 209E JASMINE 226J

BD: 9/8/21 / ASA#: 3967424 / Tattoo: 226J / 1/2 SM 1/4 AR 1/4 CS  
Fall Bred Cow / Red / Polled

W/C EXECUTIVE ORDER 8543B  
ASR BIRTHRIGHT  
ASR MS JORDAN D660



BIEBER REAL MCCOY Y124  
MCLC REAL MCCOY 40A 209E

CE	BW	WW	YW	MCE	Milk	MWW	Stay	Marb	BF	REA	API	TI
15.6	-0.8	61.4	87.9	7.6	17.1	47.7	13.1	0.05	-0.084	0.70	112.2	65.3

*AI'd to HOOK`S BOUNTY 6B (ASA# 2854458) on 12/6/23. PE to MCLC Powder 32H Keen 5K (ASA# 4022003) from 12/16/23 to 1/23/24.*

MCLC BRIGHT 213E JUICE 218J is a young daughter of ASR BIRTHRIGHT.

CE	BW	WW	YW	MCE	Milk	MWW	Stay	Marb	BF	REA	API	TI
13.8	-0.4	64.3	94.4	8.1	21.7	53.8	10.9	0.13	-0.067	0.56	110.3	68.4

*AI'd to OMF Epic E27 (ASA# 3317371) on 12/8/23. PE to MCLC Powder 32H Keen 5K (ASA# 4022003) from 12/16/23 to 1/23/24. Confirmed bred, natural service, with a bull calf.*  
MCLC BRIGHT 209E JASMINE 226J is a young daughter of ASR BIRTHRIGHT back to a BIEBER sired cow.

# MCLAIN LINK CATTLE CO. DISPERSAL FALL BRED COWS

93

MCLAIN LINK CATTLE CO.

## MCLC ENDURANCE DAHLIA

BD: 9/2/16 / ASA#: 3723880 / Tattoo: 212D / PB AR  
Fall Bred Cow / Red / Polled

SCHULER NEBULA P707 0050X  
SCHULER ENDURANCE 2101Z  
SOR FIREFLY DYNATREND 0431X



BD3P DURHEIM 922  
DURHEIM 504BD3P

CE	BW	WW	YW	MCE	Milk	MWW	Stay	Marb	BF	REA	API	TI
13.6	-2.7	52.4	86.3	8.4	22.4	48.5	16.4	0.40	0.023	0.03	156.9	83.3

AI'd to OMF Epic E27 (ASA# 3317371) on 12/7/23. PE to MCLC TRUSTEE 48F KELVIN 31K (ASA# 4024070) from 12/16/23 to 1/24/24. PE to MCLC TRUSTEE 39G KIMBER 39K (ASA# 4024073) from 12/16/23 to 1/24/24. PE to MCLC EPIC 4G KERNEL 28K (ASA# 4021995) from 12/16/23 to 1/24/24. Confirmed bred, natural service, with a bull calf.  
MCLC ENDURANCE DAHLIA is a purebred Red Angus Cow who has had 5 calves.



94

MCLAIN LINK CATTLE CO.

## MCLC STORMY CHARLOTTE ROSE

BD: 2/11/15 / ASA#: 4353685 / ARA#: 3496349 / Tattoo: 01C / PB AR  
Fall Bred Cow / Red / Polled

LSF CYCLONE 9934W  
BIEBER STORMER Z433  
BIEBER SUE 359X



BIEBER PACKER X375  
BACHMAN MS CHI-PACKER ET01A  
JEFFRIES MS CHINOOK Y929

CE	BW	WW	YW	MCE	Milk	MWW	Stay	Marb	BF	REA	API	TI
13.2	-1.9	75.5	124.9	10.3	28.7	66.4	15.9	0.39	0.039	0.19	133.8	84.1

AI'd to Ellingson Prolific (AAA# 20136857) on 12/8/23. PE to MCLC TRUSTEE 48F KELVIN 31K (ASA# 4024070) from 12/16/23 to 1/24/24. PE to MCLC TRUSTEE 39G KIMBER 39K (ASA# 4024073) from 12/16/23 to 1/24/24. PE to MCLC EPIC 4G KERNEL 28K (ASA# 4021995) from 12/16/23 to 1/24/24. Confirmed bred to Ellingson Prolific.  
MCLC STORMY CHARLOTTE ROSE with loads of BIEBER in her pedigree.

95

MCLAIN LINK CATTLE CO.

## BACHMAN Y124-N80

BD: 9/14/13 / ASA#: 3223113 / Tattoo: F18A / 1/2 AR 1/2 MX  
Fall Bred Cow / Red / Polled

BIEBER H HUGHES W109  
BIEBER REAL MCCOY Y124  
BIEBER TORYANNA 263W



CE	BW	WW	YW	MCE	Milk	MWW	Stay	Marb	BF	REA	API	TI
13.8	-3.1	56.5	82.7	10.6	22.2	50.3	6.3	0.45	0.000	0.23	140.6	87.2

AI'd to Hooks Blackhawk 50B (ASA# 2854467) on 12/8/23. PE to MCLC TRUSTEE 48F KELVIN 31K (ASA# 4024070) from 12/16/23 to 1/24/24. PE to MCLC TRUSTEE 39G KIMBER 39K (ASA# 4024073) from 12/16/23 to 1/24/24. PE to MCLC EPIC 4G KERNEL 28K (ASA# 4021995) from 12/16/23 to 1/24/24.  
BACHMAN Y124-N80 is a long time producer for us. She has had 6 calves.

96

MCLAIN LINK CATTLE CO.

## BACHMAN MS CHI-PACKER ET01A

BD: 3/14/13 / ASA#: 3223145 / Tattoo: ET01A / PB AR  
Fall Bred Cow / Red / Homo Polled

MESSMER PACKER S008  
BIEBER PACKER X375  
BASIN LASS 6415



BIEBER H HUGHES W109  
JEFFRIES MS CHINOOK Y929  
BASIN CHINOOK 8459

CE	BW	WW	YW	MCE	Milk	MWW	Stay	Marb	BF	REA	API	TI
12.6	-0.8	78.0	126.3	9.0	27.0	65.9	18.6	0.32	0.039	0.46	133.5	82.5

AI'd to OMF Epic E27 (ASA# 3317371) on 12/7/23. PE to MCLC TRUSTEE 48F KELVIN 31K (ASA# 4024070) from 12/16/23 to 1/24/24. PE to MCLC TRUSTEE 39G KIMBER 39K (ASA# 4024073) from 12/16/23 to 1/24/24. PE to MCLC EPIC 4G KERNEL 28K (ASA# 4021995) from 12/16/23 to 1/24/24. Confirmed bred to OMF Epic E27.  
BACHMAN MS CHI-PACKER ET01A is a daughter of BIEBER PACKER X375. She has had 7 calves.

97

MCLAIN LINK CATTLE CO.

## BD3P DURHEIM 922

BD: 4/23/09 / ASA#: 3223146 / Tattoo: 922 / PB AR  
Fall Bred Cow / Red / Homo Polled



GLACIER CHATEAU 744  
DURHEIM 504BD3P  
DURHEIM 797G

CE	BW	WW	YW	MCE	Milk	MWW	Stay	Marb	BF	REA	API	TI
12.9	-3.0	39.2	55.1	8.0	21.3	40.8	9.6	0.50	0.054	0.14	141.0	77.1

AI'd to Clemson Elite 41J (ASA# 4068318) on 12/8/23. PE to MCLC TRUSTEE 48F KELVIN 31K (ASA# 4024070) from 12/16/23 to 1/24/24. PE to MCLC TRUSTEE 39G KIMBER 39K (ASA# 4024073) from 12/16/23 to 1/24/24. PE to MCLC EPIC 4G KERNEL 28K (ASA# 4021995) from 12/16/23 to 1/24/24. Confirmed bred, natural service, with a bull calf.  
BD3P DURHEIM 922 she is homo polled and has had 7 calves.

98

MCLAIN LINK CATTLE CO.

## MCLC JULIE'S RED LEGACY EGRIT

BD: 9/4/17 / ASA#: 3933482 / Tattoo: 213E / 1/2 SM 1/2 CS  
Fall Bred Cow / Red / Polled

TNT GUNNER N208  
MVS TECUMSEH  
MVS MISS SCARLET Z16



CE	BW	WW	YW	MCE	Milk	MWW	Stay	Marb	BF	REA	API	TI
12.5	1.8	74.8	104.1	7.3	19.9	57.3	10.6	-0.03	-0.105	0.65	98.6	67.8

AI'd to Sitz Stellar 726D (AAA# 18397542) on 12/7/23. PE to MCLC TRUSTEE 48F KELVIN 31K (ASA# 4024070) from 12/16/23 to 1/24/24. PE to MCLC TRUSTEE 39G KIMBER 39K (ASA# 4024073) from 12/16/23 to 1/24/24. PE to MCLC EPIC 4G KERNEL 28K (ASA# 4021995) from 12/16/23 to 1/24/24. Confirmed bred to Sitz Stellar 726D.  
MCLC JULIE'S RED LEGACY EGRIT has had 3 calves.

Bid Online!

**DVAuction**

WWW.DVAUCTION.COM



# MCLAIN LINK CATTLE CO. DISPERSAL FALL BRED COWS

99

JENNIFER MCLAIN LINK

## BIEBER DURHIEM 294Z

BD: 4/9/12 / ASA#: 4153993 / Tattoo: 294Z / 1/2 SM 3/8 AR 1/8 MX  
Fall Bred Cow / Red / Polled

HOOKS SHEAR FORCE 38K  
WS BEEF MAKER R13  
DCR MS RIBEYE N72



GLACIER CHATEAU 744  
BD3P DURHEIM 596  
DURHEIM 596



LOT 99

CE	BW	WW	YW	MCE	Milk	MWW	Stay	Marb	BF	REA	API	TI
12.6	0.2	73.6	111.9	8.5	29.6	66.4	17.0	0.26	-0.031	0.89	131.2	77.3

AI'd to Dikeman's Konza 13K (ASA# 4053827) on 12/8/23. PE to MCLC TRUSTEE 48F KELVIN 31K (ASA# 4024070) from 12/16/23 to 1/24/24. PE to MCLC TRUSTEE 39G KIMBER 39K (ASA# 4024073) from 12/16/23 to 1/24/24. PE to MCLC EPIC 4G KERNEL 28K (ASA# 4021995) from 12/16/23 to 1/24/24. Confirmed bred to Dikeman's Konza 13J. BIEBER DURHIEM 294Z



LOT 100



LOT 101

100

MCLAIN LINK CATTLE CO.

## MCLC PAYWEIGHTRESS 43D

BD: 2/28/16 / ASA#: 3376495 / Tattoo: 43D / PB AN  
Fall Bred Cow / Black / Polled

BASIN PAYWEIGHT 006S  
BASIN PAYWEIGHT 1682  
21AR O LASS 7017



MCLC RICK 206 B53

CE	BW	WW	YW	MCE	Milk	MWW	Stay	Marb	BF	REA	API	TI
13.9	-1.1	72.8	116.5	9.0	31.9	68.0	13.3	0.58	0.044	0.14	124.1	72.9

AI'd to Hooks Blackhawk 50B (ASA# 2854467) on 11/26/23. PE to MCLC TRUSTEE 48F KELVIN 31K (ASA# 4024070) from 12/16/23 to 1/24/24. PE to MCLC TRUSTEE 39G KIMBER 39K (ASA# 4024073) from 12/16/23 to 1/24/24. Confirmed bred to Hooks Blackhawk. MCLC PAYWEIGHTRESS 43D is sired by the great BASIN PAYWEIGHT 1682 who makes great cattle and gets harder and harder to find.

101

MCLAIN LINK CATTLE CO.

## MCLC SOCKS 275B

BD: 3/15/14 / ASA#: 3366037 / Tattoo: 275B / 1/2 AN 1/2 HH  
Fall Bred Cow



CE	BW	WW	YW	MCE	Milk	MWW	Stay	Marb	BF	REA	API	TI
12.6	-1.8	37.7	62.8	7.1	23.5	42.2	2.6	0.24	0.002	0.13	111.8	69.5

AI'd to Clemson Elite 41J (ASA# 4068318) on 12/8/23. PE to MCLC TRUSTEE 48F KELVIN 31K (ASA# 4024070) from 12/16/23 to 1/24/24. PE to MCLC TRUSTEE 39G KIMBER 39K (ASA# 4024073) from 12/16/23 to 1/24/24. PE to MCLC EPIC 4G KERNEL 28K (ASA# 4021995) from 12/16/23 to 1/24/24. Confirmed bred to Clemson Elite 41J. MCLC SOCKS 275B is 1/2 AN 1/2 HH. Make some maximum heterosis baldies with this gal.

# MCLAIN LINK CATTLE CO. DISPERSAL FALL BRED COWS

**102**

MCLAIN LINK CATTLE CO.

## MCLC 63 F43A 201J

BD: 8/12/21 / ASA#: 3967417 / Tattoo: 201J / 1/2 AN 1/2 AR  
Fall Bred Cow / Hetero Black / Polled



BIEBER REAL MCCOY Y124  
BACHMAN MS Y124-YELL11  
BACHMAN HRA492-CB38

CE	BW	WW	YW	MCE	Milk	MWW	Stay	Marb	BF	REA	API	TI
10.3	-1.4	50.5	77.5	7.0	18.5	43.6	7.2	0.41	0.00	0.04	131.1	79.9

*AI'd to OMF Epic E27 (ASA# 3317371) on 12/6/23. PE to MCLC Powder 32H Keen 5K (ASA# 4022003) from 12/16/23 to 1/23/24. Confirmed bred to PE sire, 5K. MCLC 63 F43A 201J has BIEBER genetics.*

**103**

JENNIFER MCLAIN LINK

## MCLC BG ETO1A 228H

BD: 9/25/20 / ASA#: 3784218 / Tattoo: 228H / 1/2 AN 1/2 AR  
Fall Bred Cow / Hetero Black / Homo Polled



A A R TEN X 7008 SA  
CLINES BLACK GOLD 443 TEN X  
CLINES PRIDE 243 443 FA

BIEBER PACKER X375  
BACHMAN MS CHI-PACKER ET01A  
JEFFRIES MS CHINOOK Y929

CE	BW	WW	YW	MCE	Milk	MWW	Stay	Marb	BF	REA	API	TI
17.6	-1.4	75.8	126.2	10.6	26.3	62.9	13.8	0.65	0.044	0.21	178.2	102.8

*AI'd to OMF Epic E27 (ASA# 3317371) on 12/7/23. PE to MCLC TRUSTEE 48F KELVIN 31K (ASA# 4024070) from 12/16/23 to 1/24/24. PE to MCLC TRUSTEE 39G KIMBER 39K (ASA# 4024073) from 12/16/23 to 1/24/24. PE to MCLC EPIC 4G KERNEL 28K (ASA# 4021995) from 12/16/23 to 1/24/24. MCLC BG ETO1A 228H she is homo polled and has had 2 calves.*

**104**

MCLAIN LINK CATTLE CO.

## MCLC BG B37 272G

BD: 10/20/19 / ASA#: 3630327 / Tattoo: 272G / 3/4 AN 1/4 MX  
Fall Bred Cow / Black / Polled



A A R TEN X 7008 SA  
CLINES BLACK GOLD 443 TEN X  
CLINES PRIDE 243 443 FA

B37

CE	BW	WW	YW	MCE	Milk	MWW	Stay	Marb	BF	REA	API	TI
16.8	-1.1	65.2	105.3	9.0	26.0	57.4	5.9	0.80	0.041	0.09	163.6	99.2

*AI'd to OMF Epic E27 (ASA# 3317371) on 12/9/23. PE to MCLC TRUSTEE 48F KELVIN 31K (ASA# 4024070) from 12/16/23 to 1/24/24. PE to MCLC TRUSTEE 39G KIMBER 39K (ASA# 4024073) from 12/16/23 to 1/24/24. PE to MCLC EPIC 4G KERNEL 28K (ASA# 4021995) from 12/16/23 to 1/24/24. Confirmed bred to OMF Epic E27. MCLC BG B37 272G this 3/4 AN 1/4 MX has quite a bit of marbling. She has had 3 calves.*

**105**

MCLAIN LINK CATTLE CO.

## MCLC RETAG P2

BD: 3/1/18 / ASA#: 3630289 / Tattoo: P2F / PB CS  
Fall Bred Cow



CE	BW	WW	YW	MCE	Milk	MWW	Stay	Marb	BF	REA	API	TI
11.1	2.4	72.7	104.6	5.9	22.1	58.3	3.5	0.00	-0.100	0.49	82.7	66.6

*AI'd to OMF Epic E27 (ASA# 3317371) on 12/9/23. PE to MCLC TRUSTEE 48F KELVIN 31K (ASA# 4024070) from 12/16/23 to 1/24/24. PE to MCLC TRUSTEE 39G KIMBER 39K (ASA# 4024073) from 12/16/23 to 1/24/24. PE to MCLC EPIC 4G KERNEL 28K (ASA# 4021995) from 12/16/23 to 1/24/24. Confirmed bred to OMF Epic E27. MCLC RETAG P2 has had 3 calves.*

**106**

MCLAIN LINK CATTLE CO.

## MCLC MS ADDED 61E

BD: 3/22/17 / ASA#: 3366055 / Tattoo: 61E / 1/2 SM 1/2 AN  
Fall Bred Cow / Black / Polled



KNH ADDED VALUE 58W  
RC ADDED VALUE 101B  
RC MISS INTEGRITY 504X

H A IMAGE MAKER 0415  
MCLC IMAGE MAKER B30

CE	BW	WW	YW	MCE	Milk	MWW	Stay	Marb	BF	REA	API	TI
12.4	-0.8	61.4	95.5	7.2	23.1	54.0	16.5	0.34	-0.004	0.28	129.6	71.0

*AI'd to HOOK`S BOUNTY 6B (ASA# 2854458) on 11/28/23. PE to MCLC TRUSTEE 48F KELVIN 31K (ASA# 4024070) from 12/16/23 to 1/24/24. PE to MCLC TRUSTEE 39G KIMBER 39K (ASA# 4024073) from 12/16/23 to 1/24/24. Confirmed bred, natural service. MCLC MS ADDED 61E is 1/2 SM 1/2 AN sired by the great female maker RC ADDED VALUE 101B. She has had 5 calves.*

**107**

MCLAIN LINK CATTLE CO.

## MCLC BG 593 231E

BD: 9/13/17 / ASA#: 3928947 / Tattoo: 231E / PB AN  
Fall Bred Cow / Black / Polled



A A R TEN X 7008 SA  
CLINES BLACK GOLD 443 TEN X  
CLINES PRIDE 243 443 FA

CE	BW	WW	YW	MCE	Milk	MWW	Stay	Marb	BF	REA	API	TI
17.8	-2.1	60.1	100.2	10.0	23.1	51.9	5.9	0.76	0.035	0.06	122.0	71.1

*AI'd to OMF Epic E27 (ASA# 3317371) on 12/9/23. PE to MCLC TRUSTEE 48F KELVIN 31K (ASA# 4024070) from 12/16/23 to 1/24/24. PE to MCLC TRUSTEE 39G KIMBER 39K (ASA# 4024073) from 12/16/23 to 1/24/24. PE to MCLC EPIC 4G KERNEL 28K (ASA# 4021995) from 12/16/23 to 1/24/24. Confirmed bred, natural service, with a heifer calf. MCLC BG 593 231E she is a purebred Angus who has had 3 calves.*

**108**

MCLAIN LINK CATTLE CO.

## MCLC IM PAYWEIGHT 67D

BD: 3/6/16 / ASA#: 3375930 / Tattoo: 67D / PB AN  
Fall Bred Cow / Black / Polled



BASIN PAYWEIGHT 006S  
BASIN PAYWEIGHT 1682  
21AR O LASS 7017

H A IMAGE MAKER 0415  
MCLC IMAGE MAKER B92

CE	BW	WW	YW	MCE	Milk	MWW	Stay	Marb	BF	REA	API	TI
14.4	-1.7	72.8	116.4	8.8	28.2	64.6	16.4	0.53	0.046	0.07	128.9	71.9

*PE to MCLC TRUSTEE 48F KELVIN 31K (ASA# 4024070) from 12/16/23 to 1/24/24. PE to MCLC TRUSTEE 39G KIMBER 39K (ASA# 4024073) from 12/16/23 to 1/24/24. Confirmed bred, natural service. MCLC IM PAYWEIGHT 67D is sired by BASIN PAYWEIGHT 1682 and has had 6 calves.*

**109**

MCLAIN LINK CATTLE CO.

## MCLC CLINE 320

BD: 2/1/13 / ASA#: 3359982 / Tattoo: 320Z / PB AN  
Fall Bred Cow



CE	BW	WW	YW	MCE	Milk	MWW	Stay	Marb	BF	REA	API	TI
12.2	-1.3	51.4	81.4	7.1	23.8	49.4	3.6	0.53	0.020	0.17	92.0	58.5

*PE to MCLC TRUSTEE 48F KELVIN 31K (ASA# 4024070) from 12/16/23 to 1/24/24. PE to MCLC TRUSTEE 39G KIMBER 39K (ASA# 4024073) from 12/16/23 to 1/24/24. PE to MCLC EPIC 4G KERNEL 28K (ASA# 4021995) from 12/16/23 to 1/24/24. MCLC CLINE 320 is a purebred Angus who has had 5 calves.*



MCLAIN LINK CATTLE CO. DISPERSAL  
FALL BRED HEIFERS



**OMF EPIC E27**  
SERVICE SIRE OF LOTS 110 AND 111



**WS RED MOON D76**  
MATERNAL GRANDSIRE OF LOT 111



**110** MCLAIN LINK CATTLE CO.  
**MCLC HEADLINE 212D KARI 205K**

BD: 8/31/22 / ASA#: 4098662 / Tattoo: 205K / 1/2 SM 1/2 AR  
Fall Bred Heifer / Hetero Black / Polled

HOOK`S FRONTLINE 40F  
HOOK`S HEADLINE 203H  
HOOK`S CRYSTAL 1C



SCHULER ENDURANCE 2101Z  
MCLC ENDURANCE DAHLIA  
BD3P DURHEIM 922

CE	BW	WW	YW	MCE	Milk	MWW	Stay	Marb	BF	REA	API	TI
13.3	-1.9	60.3	96.5	8.3	25.2	55.3	20.2	0.58	-0.011	0.45	154.4	78.8

AI'd to OMF Epic E27 (ASA# 3317371) on 12/6/23. PE to MCLC Powder 32H Keen 5K (ASA# 4022003) from 12/16/23 to 1/23/24. Confirmed bred to OMF Epic E27. MCLC HEADLINE 212D KARI 205K is stout & powerfull and huge ribbed. This female has a donor cow look.

**111** MCLAIN LINK CATTLE CO.  
**MCLC EPIC 205H KINA 232K**

BD: 9/8/22 / ASA#: 4098661 / Tattoo: 232K / PB SM  
Fall Bred Heifer / Hetero Black / Polled

WS ALL-AROUND Z35  
OMF EPIC E27  
OMF TIME LESS B100



WS RED MOON D76  
MCLC MOON HILDA 205H  
111 BD3P

CE	BW	WW	YW	MCE	Milk	MWW	Stay	Marb	BF	REA	API	TI
14.0	-1.8	75.0	108.1	7.8	23.7	61.0	17.8	0.22	-0.055	0.70	135.5	78.7

AI'd to OMF Epic E27 (ASA# 3317371) on 12/7/23. PE to MCLC Powder 32H Keen 5K (ASA# 4022003) from 12/16/23 to 1/23/24. Confirmed bred to OMF Epic E27. MCLC EPIC 205H KINA 232K is sired by OMF EPIC E27. She is super balanced and has the look of a great cow in the making.



# MCLAIN LINK CATTLE CO. DISPERSAL FALL BRED HEIFERS



LOT 112

**112** **MCLC EPIC F18A KOLBI 242K** MCLAIN LINK CATTLE CO.  
 BD: 9/12/22 / ASA#: 4098684 / Tattoo: 242K / 1/2 SM 1/4 AR 1/4 MX  
 Fall Bred Heifer / Hetero Black / Polled

WS ALL-AROUND Z35  
 OMF EPIC E27  
 OMF TIME LESS B100

X

BIEBER REAL MCCOY Y124  
 BACHMAN Y124-N80

CE	BW	WW	YW	MCE	Milk	MWW	Stay	Marb	BF	REA	API	TI
13.9	-2.1	72.4	105.2	10.1	20.4	56.5	12.3	0.33	-0.025	0.47	128.8	79.1

*AI'd to Hooks Blackhawk 50B (ASA# 2854467) on 12/7/23. PE to MCLC Powder 32H Keen 5K (ASA# 4022003) from 12/16/23 to 1/23/24. Confirmed bred to Hooks Blackhawk. MCLC EPIC F18A KOLBI 242K is big outlined, pretty headed, long necked and has a swooping rib cage. She's one of the fanciest Epic daughter you will find.*



OMF EPIC E27 - SIRE OF LOT 113

**113** **MCLC EPIC 214E KAYLEE 215K** MCLAIN LINK CATTLE CO.  
 BD: 9/4/22 / ASA#: 4098402 / Tattoo: 215K / 3/4 SM 1/8 AN 1/8 CS  
 Fall Bred Heifer / Black / Polled

WS ALL-AROUND Z35  
 OMF EPIC E27  
 OMF TIME LESS B100

X

HOOK`S BOULEVARD 41B  
 MCLC BOUL EMERALD 453B  
 MCLC MONTANA 453B

CE	BW	WW	YW	MCE	Milk	MWW	Stay	Marb	BF	REA	API	TI
13.7	-0.2	74.4	110.5	8.1	21.2	58.3	15.2	0.30	-0.056	0.62	131.3	78.1

*AI'd to Hooks Blackhawk 50B (ASA# 2854467) on 12/7/23. PE to MCLC Powder 32H Keen 5K (ASA# 4022003) from 12/16/23 to 1/23/24. Confirmed bred to Hooks Blackhawk. MCLC EPIC 214E KAYLEE 215K is a 3/4 Epic daughter that will be perfect to make either purebreds or Sim Angus.*



LOT 114

**114** **MCLC F AND S 201F KANDY 211K** MCLAIN LINK CATTLE CO.  
 BD: 9/3/22 / AAA#: 20645872 / Tattoo: 211K / PB AN  
 Fall Bred Heifer / Black / Polled

WOODHILL BLUEPRINT  
 MYERS FAIR-N-SQUARE M39  
 MYERS MISS BEAUTY M136

X

KM BROKEN BOW 002  
 MCLC EVER PROGRAM BOW 201F  
 MCLC EVER PROGRAM 215D

CED	BW	WW	YW	CEM	Milk	MW	Doc	Marb	RE	Fat	\$W	\$C

*AI'd to S PowerPoint WS 5503 (AAA# 18159093) on 12/6/23. PE to MCLC Powder 32H Keen 5K (ASA# 4022003) from 12/16/23 to 1/23/24. Confirmed bred to S PowerPoint WS 5503, with a bull calf. MCLC FairNsquare Kandy 211K is a purebred Angus out of one of the hottest bulls in the country Myers Fair-N-Square M39. She is beatifully designed like you would expect from her sire.*



HOOK`S HEADLINE 203H - SIRE OF LOT 115

**115** **MCLC HEADLINE 213E KAY 206K** MCLAIN LINK CATTLE CO.  
 BD: 8/31/22 / ASA#: 4098688 / Tattoo: 206K / 1/2 SM 1/2 CS  
 Fall Bred Heifer / Hetero Black / Polled

HOOK`S FRONTLINE 40F  
 HOOK`S HEADLINE 203H  
 HOOK`S CRYSTAL 1C

X

MVS TECUMSEH  
 MCLC JULIE`S RED LEGACY EGRIT

CE	BW	WW	YW	MCE	Milk	MWW	Stay	Marb	BF	REA	API	TI
12.7	0.3	70.7	104.2	7.8	24.0	59.2	17.3	0.37	-0.075	0.75	136.2	77.7

*AI'd to OMF Epic E27 (ASA# 3317371) on 12/6/23. PE to MCLC Powder 32H Keen 5K (ASA# 4022003) from 12/16/23 to 1/23/24. Confirmed bred to OMF Epic E27. MCLC HEADLINE 213E KAY 206K she is a HOOK`S HEADLINE 203H daughter with lots of performance.*



# MCLAIN LINK CATTLE CO. DISPERSAL SPRING OPEN HEIFERS

**116**

MCLAIN LINK CATTLE CO.

## MCLC BOUNTY 451B LILLY17L

BD: 3/18/23 / ASA#: 4265334 / Tattoo: 17L / 5/8 SM 3/8 AN  
Spring Open Heifer / Black / Homo Polled

MCM TOP GRADE 018X  
**HOOK`S BOUNTY 6B**  
HOOK`S YUMA 49Y



ALL/FHG FIRST ASCENT 117Y  
**MISS CHARLO 451B**  
BAIRDS RIGHT TIME S136

CE	BW	WW	YW	MCE	Milk	MWW	Stay	Marb	BF	REA	API	TI
10.9	0.4	72.3	116.6	5.5	29.1	66.3	18.0	0.13	-0.073	0.73	124.4	73.2

*Sells open and ready to breed.*

MCLC BOUNTY 451B LILLY17L is homo polled is a full baldy daughter of HOOK`S BOUNTY 6B. He makes great cows. She will follow the family tradition.



**LOT 116**

**117**

MCLAIN LINK CATTLE CO.

## MCLC BOUNTY 81H LEAH 18L

BD: 3/19/23 / ASA#: 4191500 / Tattoo: 18L / 3/4 SM 1/4 AN  
Spring Open Heifer / Black / Polled

MCM TOP GRADE 018X  
**HOOK`S BOUNTY 6B**  
HOOK`S YUMA 49Y



ASR LONGEVITY Y184  
**MCLC LONGEVITY 55E 81H**  
MCLC BEACONESS 55E

CE	BW	WW	YW	MCE	Milk	MWW	Stay	Marb	BF	REA	API	TI
11.9	1.2	77.6	123.8	8.6	27.1	65.8	18.0	0.31	-0.072	1.01	136.2	80.0

*Sells open and ready to breed.*

MCLC BOUNTY 81H LEAH 18L is has a blaze face and an outstanding front end. She is the front pasture kind.



**LOT 117**

**118**

MCLAIN LINK CATTLE CO.

## MCLC EPIC 13304 LULA 9L

BD: 3/15/23 / ASA#: 4191478 / Tattoo: 9L / 1/2 SM 1/4 AN 1/4 CS  
Spring Open Heifer / Black / Polled

WS ALL-AROUND Z35  
**OMF EPIC E27**  
OMF TIME LESS B100



**MCLC JULIE LINE 13304**

CE	BW	WW	YW	MCE	Milk	MWW	Stay	Marb	BF	REA	API	TI
13.1	-0.1	75.5	110.8	8.2	20.1	57.8	11.0	0.24	-0.045	0.52	118.4	76.6

*Sells open and ready to breed.*

MCLC EPIC 13304 LULA 9L's sire OMF EPIC E27 typically takes off the white. Take advantage of this brockle faced daughter in a neat package.



**LOT 118**

**119**

MCLAIN LINK CATTLE CO.

## MCLC BOUNTY 55H LINDY 15L

BD: 3/18/23 / ASA#: 4191487 / Tattoo: 15L / 3/4 SM 3/16 AN 1/16 HH  
Spring Open Heifer / Black / Polled

MCM TOP GRADE 018X  
**HOOK`S BOUNTY 6B**  
HOOK`S YUMA 49Y



ASR LONGEVITY Y184  
**MCLC LONGEVITY 25E 54H**  
MCLC MS ZENITH 25E

CE	BW	WW	YW	MCE	Milk	MWW	Stay	Marb	BF	REA	API	TI
10.1	2.4	77.9	125.2	7.1	23.3	62.2	19.1	0.20	-0.083	0.92	128.4	75.6

*Sells open and ready to breed.*

MCLC BOUNTY 55H LINDY 15L is a short eared wide blaze face female with a million dollar disposition. She has a little Hereford in her which adds to her soft and flexible structure.



**LOT 119**



# MCLAIN LINK CATTLE CO. DISPERSAL SPRING OPEN HEIFERS



**120**

MCLAIN LINK CATTLE CO.

## MCLC EPIC 220G LINDSEY 22L

BD: 3/20/23 / ASA#: 4191503 / Tattoo: 22L / 5/8 SM 3/8 AN  
Spring Open Heifer / Black / Homo Polled

WS ALL-AROUND Z35  
OMF EPIC E27  
OMF TIME LESS B100



MILL BAR HICKOK 7242  
MCLC HICKOK GLADICE 220G  
MCLC BOULEVARD EVIE 227E

CE	BW	WW	YW	MCE	Milk	MWW	Stay	Marb	BF	REA	API	TI
14.6	-0.2	82.4	128.3	7.8	23.0	64.6	18.0	0.44	-0.025	0.63	149.3	86.5

*Sells open and ready to breed.*

MCLC Epic 220G Lindsey 22L is a homo polled daughter of OMF EPIC E27. She is flawless in her design and has a beautiful profile. She will make an exceptionally pretty well balanced cow and will have the perfect udder you can expect from an Epic daughter.

**LOT 120**



**121**

MCLAIN LINK CATTLE CO.

## MCLC EPIC 8G LENORA 12L

BD: 3/17/23 / ASA#: 4191499 / Tattoo: 12L / 3/4 SM 1/8 AN 1/8 CS  
Spring Open Heifer / Black / Polled

WS ALL-AROUND Z35  
OMF EPIC E27  
OMF TIME LESS B100



CDI HOMETOWN 246A  
MCLC HOMETOWN JLINE GINGER 8G  
MCLC JULIE LINE 13304Z

CE	BW	WW	YW	MCE	Milk	MWW	Stay	Marb	BF	REA	API	TI
11.9	0.4	82.7	122.8	7.1	19.7	60.9	15.1	0.27	-0.062	0.81	129.7	81.5

*Sells open and ready to breed.*

MCLC EPIC 8G LENORA 12L is an Epic back to our famous Julie cow family. She will make an awesome producing cow.

OMF EPIC E27 - SIRE OF LOT 121



**122**

MCLAIN LINK CATTLE CO.

## MCLC TRUSTEE POPEYE LUCY 10L

BD: 3/16/23 / ASA#: 4191480 / Tattoo: 10L / 1/2 SM 1/4 AN 1/4 CS  
Spring Open Heifer / Red / Polled

CDI REVIVAL 370D  
CDI TRUSTEE 387F  
CDI MISS HOMETOWN 163C



MCLC JULIE`S DESIGN POPEYE

CE	BW	WW	YW	MCE	Milk	MWW	Stay	Marb	BF	REA	API	TI
11.6	1.5	80.0	121.0	4.7	25.0	64.9	9.2	0.26	-0.072	0.90	114.5	79.1

*Sells open and ready to breed.*

MCLC TRUSTEE POPEYE LUCY 10L is a red powerful daughter of CDI TRUSTEE 387F. Another Julie line backed by New Design 878, a maternal machine!

**LOT 122**



MCLAIN LINK CATTLE CO. DISPERSAL  
FALL OPEN HEIFERS



**WS RED MOON D76**  
MATERNAL GRANDSIRE OF LOT 123



**HOOK'S BOUNTY 6B**  
SIRE OF LOTS 123 AND 124



**123**

MCLAIN LINK CATTLE CO.

**MCLC BOUNTY 205H 235L**

BD: 9/19/23 / ASA#: 4257504 / Tattoo: 235L / 3/4 SM 1/8 AN 1/8 AR  
Fall Open Heifer / Hetero Black / Polled

MCM TOP GRADE 018X  
**HOOK'S BOUNTY 6B**  
HOOK'S YUMA 49Y



WS RED MOON D76  
**MCLC MOON HILDA 205H**  
111 BD3P

CE	BW	WW	YW	MCE	Milk	MWW	Stay	Marb	BF	REA	API	TI
12.1	0.7	83.3	127.9	6.5	32.1	73.6	19.1	0.22	-0.083	0.94	136.6	82.4

*Sells open.*

MCLC BOUNTY 205H 235 has the perfect blaze face. She is as nice designed as any female in the dispersal. She is a front pasture kind and could make a donor or show heifer. This heifer goes all the way back to the immortal Beefmaker. Her dam sells as lot 86.

**124**

MCLAIN LINK CATTLE CO.

**MCLC BOUNTY 236L LINDE 225G**

BD: 9/19/23 / ASA#: 4255133 / Tattoo: 236L / 1/2 SM 1/2 AN  
Fall Open Heifer / Black / Polled

MCM TOP GRADE 018X  
**HOOK'S BOUNTY 6B**  
HOOK'S YUMA 49Y



MILL BAR HICKOK 7242  
**MCLC HICKOK GLENDA 225G**  
MCLC BOUL EMPRESS 235E

CE	BW	WW	YW	MCE	Milk	MWW	Stay	Marb	BF	REA	API	TI
12.2	1.4	82.4	133.5	6.3	31.5	73.1	18.5	0.40	-0.053	0.81	143.7	84.9

*Sells open.*

MCLC BOUNTY 236L LINDE 225G is a striking brockle faced percentage heifer. She is even more impressive in person.

# MCLAIN LINK CATTLE CO. DISPERSAL FALL OPEN HEIFERS



125

MCLAIN LINK CATTLE CO.

## MCLC THORITY 225F LOU 227L

BD: 9/15/23 / ASA#: 4257507 / Tattoo: 227L / 3/4 SM 3/16 AN 1/16 CS  
Fall Open Heifer / Black / Polled

CDI AUTHORITY 77X  
MG/GSC AUTHORITY W14C  
OBCC MS TAILOR 14TW



GIBBS 3009A ELEMENT  
MCLC STAR ELEMENT 225F  
MCLC WINTER STAR 595

CE	BW	WW	YW	MCE	Milk	MWW	Stay	Marb	BF	REA	API	TI
11.2	1.6	70.6	107.1	5.2	24.3	59.6	14.0	0.13	-0.062	0.80	112.5	69.8

*Sells open.*

MCLC THORITY 225F LOU 227L this 3/4 heifer blaze face female has a great look from the side. MG/GSC AUTHORITY W14C makes them fancy.



126

MCLAIN LINK CATTLE CO.

## MCLC BOUNTY 43D 219L

BD: 9/13/23 / ASA#: 4348717 / Tattoo: 219L / 3/8 SM 5/8 AN  
Fall Open Heifer / Black / Polled

MCM TOP GRADE 018X  
HOOK`S BOUNTY 6B  
HOOK`S YUMA 49Y



BASIN PAYWEIGHT 1682  
MCLC PAYWEIGHTRESS 43D  
MCLC RICK 206 B53

CE	BW	WW	YW	MCE	Milk	MWW	Stay	Marb	BF	REA	API	TI
12.6	0.6	81.1	131.0	8.4	33.7	74.1	17.1	0.39	-0.030	0.60	137.6	82.8

*Sells open.*

MCLC BOUNTY 43D 219L is sired by HOOK`S BOUNTY 6B and is out of a BASIN PAYWEIGHT 1682 cow. Maternal power runs through her veins.

## 127 MCLC BOUNTY 227E LEVIE 229L

MCLAIN LINK CATTLE CO.

BD: 9/15/23 / ASA#: 4255145 / Tattoo: 229L / 5/8 SM 3/8 AN  
Fall Open Heifer / Black / Homo Polled

MCM TOP GRADE 018X  
HOOK`S BOUNTY 6B  
HOOK`S YUMA 49Y



HOOK`S BOULEVARD 41B  
MCLC BOULEVARD EVIE 227E  
WHITE STAR EVERELDA 102A

CE	BW	WW	YW	MCE	Milk	MWW	Stay	Marb	BF	REA	API	TI
12.9	1.6	79.8	131.2	7.5	31.2	71.1	19.0	0.45	-0.067	0.82	147.5	84.6

*Sells open.*

MCLC BOUNTY 227E LEVIE 229L is homo polled. She is balanced across the board and a high indexing female.

## 128 MCLC BOUNTY CHICHI LEA 231L

MCLAIN LINK CATTLE CO.

BD: 9/17/23 / ASA#: 4348724 / Tattoo: 231L / 3/8 SM 1/2 AR 1/8 AN  
Fall Open Heifer / Hetero Black / Homo Polled

MCM TOP GRADE 018X  
HOOK`S BOUNTY 6B  
HOOK`S YUMA 49Y



BIEBER PACKER X375  
BACHMAN MS CHI-PACKER ET01A  
JEFFRIES MS CHINOOK Y929

CE	BW	WW	YW	MCE	Milk	MWW	Stay	Marb	BF	REA	API	TI
11.7	0.6	81.8	133.2	8.3	31.2	72.1	19.7	0.27	-0.033	0.74	135.7	80.2

*Sells open.*

MCLC BOUNTY CHICHI LEA 231L is homo polled. You could make red or blacks with this outcross female.

## 129 MCLC AUTHORITY GOLDIELINE 214L

MCLAIN LINK CATTLE CO.

BD: 9/12/23 / ASA#: 4348716 / Tattoo: 214L / 3/4 SM 1/4 AR  
Fall Open Heifer / Black / Polled

CDI AUTHORITY 77X  
MG/GSC AUTHORITY W14C  
OBCC MS TAILOR 14TW



SVF/NJC BUILT RIGHT N48  
MCLC BUILT RIGHT 212D GELATO 2  
MCLC ENDURANCE DAHLIA

CE	BW	WW	YW	MCE	Milk	MWW	Stay	Marb	BF	REA	API	TI
12.5	0.3	63.4	94.9	5.5	20.4	52.0	16.8	0.01	-0.048	0.60	112.0	63.4

*Sells open.*

MCLC AUTHORITY GOLDIELINE 214L this MG/GSC AUTHORITY W14C sired female is out of a SVF/NJC BUILT RIGHT N48 cow.

## 130 MCLC COMRADE 216G LOU 218L

MCLAIN LINK CATTLE CO.

BD: 9/13/23 / ASA#: 4257508 / Tattoo: 218L / 1/2 SM 1/2 AN  
Fall Open Heifer / Black / Polled

CONNELLY COMRADE 1385  
RRR MR COMRADE 27F  
RRR MS UPGRADE 62D



GW-WBF SUBSTANCE 820Y  
MCLC SUBSTANCE 220 216G  
MCLC BLUE 220

CE	BW	WW	YW	MCE	Milk	MWW	Stay	Marb	BF	REA	API	TI
12.5	0.7	86.7	139.8	5.7	24.1	67.9	10.3	0.53	-0.012	0.75	137.4	90.5

*Sells open.*

MCLC COMRADE 216G LOU 218L is an outcross female.



# MCLAIN LINK CATTLE CO. DISPERSAL FALL OPEN HEIFERS

**131**

MCLAIN LINK CATTLE CO.

## MCLC COMRADE 209G LYNN 228L

BD: 9/15/23 / ASA#: 4255134 / Tattoo: 228L / 3/8 SM 5/8 AN  
Fall Open Heifer / Black / Polled

CONNEALY COMRADE 1385  
RRR MR COMRADE 27F  
RRR MS UPGRADE 62D



MILL BAR HICKOK 7242  
MCLC HICKOK GRETCHEN 209G  
MCLC BEACON ELLIE 229E

CE	BW	WW	YW	MCE	Milk	MWW	Stay	Marb	BF	REA	API	TI
14.9	0.5	91.4	148.9	6.4	29.0	75.6	12.9	0.59	0.009	0.86	147.6	93.9

*Sells open.*

MCLC COMRADE 209G LYNN 228L has lots of maternal genetics.

**132**

MCLAIN LINK CATTLE CO.

## MCLC COMRADE 272G 240L

BD: 9/22/23 / ASA#: 4257505 / Tattoo: 240L / 1/4 SM 5/8 AN 1/8 MX  
Fall Open Heifer / Black / Polled

CONNEALY COMRADE 1385  
RRR MR COMRADE 27F  
RRR MS UPGRADE 62D



CLINES BLACK GOLD 443 TEN X  
MCLC BG B37 272G  
B37

CE	BW	WW	YW	MCE	Milk	MWW	Stay	Marb	BF	REA	API	TI
15.2	-0.4	79.9	131.8	7.0	26.2	66.0	8.3	0.67	0.022	0.50	139.4	89.2

*Sells open.*

MCLC COMRADE 272G 240L is a great numbered out cross low percentage female.

**133**

MCLAIN LINK CATTLE CO.

## MCLC F&S 215D 210L

BD: 9/8/23 / ASA#: Pending / Tattoo: 210L /  
Fall Open Heifer



CE	BW	WW	YW	MCE	Milk	MWW	Stay	Marb	BF	REA	API	TI
----	----	----	----	-----	------	-----	------	------	----	-----	-----	----

*Sells open.*

Bid Online!

DVAuction

WWW.DVAUCTION.COM

# MCLAIN LINK CATTLE CO. SEMEN OFFERING

LOT#	CANE CODE	SIRE NAME	UNITS
300	SM3049	NJC BUILT RIGHT	11
301	AN1390	BAR AR JET BLACK 5063	4
302	AN1949	SPRING COVE CROSSBOW	2
303	HP0913	KFC BENNET 9126J	1
304	AR851	BIEBER FEDERATION B544	2
305	SM5233	WS ZENITH	2
306	SM09047	HITMAN	10
307	SM09047	HITMAN (SEXED)	1
308	SM09032	HILB ORACLE(SEXED)	5
309	SM0496	GW COPPERHEAD 919G (1/4 CC)	6
310	SM09028	TFS BLACK POWDER (SEXED)	2
311	AN1783	KCF BENNETT ABSOLUTE	4
312	AN01469	POWERPOINT	4
313	HP0906	SHF RIB EYE	6

LOT#	CANE CODE	SIRE NAME	UNITS
314	AN1523	BON VIEW NEW DESIGN	10
315	AN2103	BON VIEW NEW DESIGN	10
316	AN1523	BON VIEW NEW DESIGN	10
317	AN2103	BON VIEW NEW DESIGN	10
318	AN1523	BON VIEW NEW DESIGN	12
319	AN2103	RAVEN POWERBALL (1/4 CC)	2
320	ANB2025	SITZ STELLAR 726D	4
321	SM3049	NJC BUILT RIGHT	3
322	AN1886	BARRETT'S IRON MIKE 0966	2
323	AN1828	SUMMITCREST FOCUS 2U66	9
324	AN1891	QUAKER HILL RAMPAGE	9
325	AN01573	CONNEALY EMERALD	7
326	AN7444	NEVERMORE 8138	2
327	AN1895	BASIN PAYWEIGHT 1682	4
328	AN2077	GAR INERTIA 5226	4
329	AN0268	NXC ALLEGIANCE	6
330	SM0373	CNS DREAM ON	3
331	AN01663	KCF BENNET EXPONENTIAL	7

MCLAIN LINK CATTLE CO. DISPERSAL  
AGE-ADVANTAGE BULLS



CDI TRUSTEE 387F  
SIRE OF LOTS 134 & 135



134

MCLAIN LINK CATTLE CO.

**MCLC TRUSTEE 48F KELVIN 31K**

BD: 3/12/22 / ASA#: 4024070 / Tattoo: 31K / 3/4 SM 1/4 CS  
Age-Advantage Bull / Black / Polled

CDI REVIVAL 370D  
CDI TRUSTEE 387F  
CDI MISS HOMETOWN 163C



HOOK`S YELLOWSTONE 97Y  
MCLC YSTONE FABLE 48F  
MCLC MONTANA 109B

CE	BW	WW	YW	MCE	Milk	MWW	Stay	Marb	BF	REA	API	TI
12.1	1.2	85.7	128.9	4.7	31.1	73.8	13.0	0.18	-0.098	1.08	133.5	86.5

135

MCLAIN LINK CATTLE CO.

**MCLC TRUSTEE 39G KIMBER 39K**

BD: 3/17/22 / ASA#: 4024073 / Tattoo: 39K / PB SM  
Age-Advantage Bull / Black / Homo Polled

CDI REVIVAL 370D  
CDI TRUSTEE 387F  
CDI MISS HOMETOWN 163C



KOCH BIG TIMBER 685D  
MCLC TIMBER GLADICE 49G  
MISS CHARLO 451B

CE	BW	WW	YW	MCE	Milk	MWW	Stay	Marb	BF	REA	API	TI
11.6	0.8	84.3	129.1	4.2	24.0	66.6	16.5	0.23	-0.069	0.95	130.9	81.9

MCLC TRUSTEE 39G KIMBER 39K is a homo polled son of CDI TRUSTEE 387F. He is attractive fronted yet has the power we all like to see in our herd sires.



# MCLAIN LINK CATTLE CO. DISPERSAL AGE-ADVANTAGE & YEARLING BULLS

136

MCLAIN LINK CATTLE CO.

## MCLC BOUNTY 43D KLONDIKE 245K

BD: 9/13/22 / ASA#: 4098397 / Tattoo: 245K / 3/8 SM 5/8 AN  
Age-Advantage Bull / Black / Polled

MCM TOP GRADE 018X  
HOOK`S BOUNTY 6B  
HOOK`S YUMA 49Y



BASIN PAYWEIGHT 1682  
MCLC PAYWEIGHTRESS 43D  
MCLC RICK 206 B53

CE	BW	WW	YW	MCE	Milk	MWW	Stay	Marb	BF	REA	API	TI
----	----	----	----	-----	------	-----	------	------	----	-----	-----	----

12.3 1.6 91.2 145.2 8.2 33.7 79.1 17.1 0.39 -0.030 0.69 139.4 87.7

MCLC BOUNTY 43D KLONDIKE 245K is a brockle faced bull with top 10 % growth.



LOT 136

137

MCLAIN LINK CATTLE CO.

## MCLC BOUNTY 227E KILLIAN 219K

BD: 9/5/22 / ASA#: 4098668 / Tattoo: 219K / 5/8 SM 3/8 AN  
Age-Advantage Bull / Black / Homo Polled

MCM TOP GRADE 018X  
HOOK`S BOUNTY 6B  
HOOK`S YUMA 49Y



HOOK`S BOULEVARD 41B  
MCLC BOULEVARD EVIE 227E  
WHITE STAR EVERELDA 102A

CE	BW	WW	YW	MCE	Milk	MWW	Stay	Marb	BF	REA	API	TI
----	----	----	----	-----	------	-----	------	------	----	-----	-----	----

12.7 2.4 87.7 142.5 7.3 31.2 75.1 19.0 0.45 -0.067 0.89 148.9 88.5

MCLC BOUNTY 227E KILLIAN 219K is homo polled. He is stout powerful, big bodied and slick haired. Put him on your short list.



LOT 137

138

MCLAIN LINK CATTLE CO.

## MCLC POWDER 32H KEEN 5K

BD: 2/28/22 / ASA#: 4022003 / Tattoo: 5K / 5/8 SM 3/8 AN  
Age-Advantage Bull / Black / Polled

REMINGTON LOCK N LOAD54U  
TFS BLACK POWDER 6609D  
TFS BLACK MOON 0210



ASR LONGEVITY Y184  
MCLC LONGEVITY 90D HELENA 32H  
MCLC MS PALE FACE 90D

CE	BW	WW	YW	MCE	Milk	MWW	Stay	Marb	BF	REA	API	TI
----	----	----	----	-----	------	-----	------	------	----	-----	-----	----

13.9 -1.6 66.6 105.7 7.8 14.2 47.3 15.1 0.30 -0.033 0.80 132.4 75.1

MCLC POWDER 32H KEEN 5K here is a brockle faced bull who is heifer acceptable!



LOT 138

139

MCLAIN LINK CATTLE CO.

## MCLC AUTHORITY B02 LARAMIE 6L

BD: 3/13/23 / ASA#: 4191488 / Tattoo: 6L / 3/4 SM 1/4 AN  
Yearling Bull / Black / Polled

CDI AUTHORITY 77X  
MG/GSC AUTHORITY W14C  
OBCC MS TAILOR 14TW



GW ROBUST 605Z  
MCLC FIONA B02  
TRPH MS FINALE Z208

CE	BW	WW	YW	MCE	Milk	MWW	Stay	Marb	BF	REA	API	TI
----	----	----	----	-----	------	-----	------	------	----	-----	-----	----

11.4 0.9 77.1 115.6 3.8 27.0 65.5 15.1 0.15 -0.055 0.94 119.6 75.3

MCLC AUTHORITY B02 LARAMIE 6L is a massive powerful bull with tons of middle. He shows what you can expect with the cow power in this dispersal.



LOT 139



# MCLAIN LINK CATTLE CO. DISPERSAL YEARLING & FALL BULLS



**LOT 140**

**140**

MCLAIN LINK CATTLE CO.

## **MCLC BUILTRIGHT 234F LASSITER**

BD: 3/14/23 / ASA#: 4191511 / Tattoo: 7L / 3/4 SM 1/4 AN  
Yearling Bull / Black / Polled

CNS DREAM ON L186  
SVF/NJC BUILT RIGHT N48  
NJC EBONY ANTOINETTE



DIKEMANS SURE BET  
MCLC SURE BET 16A 234F  
MCLC FISCHER 16A

CE	BW	WW	YW	MCE	Milk	MWW	Stay	Marb	BF	REA	API	TI
12.3	0.8	64.5	93.7	6.6	20.3	52.5	14.8	0.16	-0.057	0.58	115.1	67.1

MCLC BUILTRIGHT 234F LASSITER is a SVF/NJC BUILT RIGHT N48 bull with a blaze face. Use him and keep every daughter.



**LOT 141**

**141**

MCLAIN LINK CATTLE CO.

## **MCLC ORACLE CHARLI 205L**

BD: 9/6/23 / ASA#: Pending / Tattoo: 205L /  
Fall Bull Calf / Black / Polled



CE	BW	WW	YW	MCE	Milk	MWW	Stay	Marb	BF	REA	API	TI

MCLC Oracle Charli 205L has a perfect build and has a really nice blaze face. He might be the best Oracle son in the country.



**LOT 142**

**142**

MCLAIN LINK CATTLE CO.

## **MCLC BOUNTY 244G LINNIE 221L**

BD: 9/13/23 / ASA#: 4255138 / Tattoo: 221L / 1/2 SM 15/32 AN 1/32 CS  
Fall Bull Calf / Black / Polled

MCM TOP GRADE 018X  
HOOK`S BOUNTY 6B  
HOOK`S YUMA 49Y



H A IMAGE MAKER 0415  
MCLC IMAGE STAR GLEAM 224G  
MCLC STAR`S BEACON 223E

CE	BW	WW	YW	MCE	Milk	MWW	Stay	Marb	BF	REA	API	TI
13.1	0.6	84.3	132.5	8.1	34.7	76.9	18.2	0.33	-0.049	0.81	141.8	85.4

MCLC BOUNTY 244G LINNIE 221L he has the calving ease and growth in a nice package.



**LOT 143**

**143**

MCLAIN LINK CATTLE CO.

## **MCLC BG 226E 217L**

BD: 9/13/23 / ASA#: 4255144 / Tattoo: 217L / 1/4 SM 3/4 AN  
Fall Bull Calf / Black / Polled

AA R TEN X 7008 SA  
CLINES BLACK GOLD 443 TEN X  
CLINES PRIDE 243 443 FA



HOOK`S BEACON 56B  
MCLC BEACON ENCHANT 226E  
MCLC FISCHER 16A

CE	BW	WW	YW	MCE	Milk	MWW	Stay	Marb	BF	REA	API	TI
18.8	-1.8	76.2	123.1	11.2	29.0	65.8	11.3	0.80	0.025	0.49	157.5	92.2

MCLC BG 226E 217L is a super calving ease prospect. His daughters will make great cows too!



# YEARLING BULLS

144

BRACKER LIVESTOCK

## BRAC LEGEND 309L

BD: 1/9/23 / AAA#: 20937816 / Tattoo: 309L / PB AN  
Yearling Bull / Black / Polled

V A R DISCOVERY 2240

V A R LEGEND 5019

PF CC&7 HENRIETTA PRIDE 1044



VINTAGE LEGACY 4409

GVC KAYLEE F209A

GVC KAYLEE A19

CED	BW	WW	YW	CEM	Milk	MW	Doc	Marb	RE	Fat	\$W	\$C
I+6	I+2.2	I+7.1	I+13.0	I+12	I+19	I+103	I+18	I+.67	I+.68	I-.008	+53	+244

We have started developing our Angus herd the last few years and we are excited to offer this bull as an example of what we can produce. 309L is a rugged beef bull that reads with plenty of athleticism and longevity. We love the growth that these Legend cattle offer without sacrificing the basics of structure and hoof quality. On the maternal side, his pedigree reflects generations of cow power, with his dam being one of our selections from the Green Valley Cattle dispersal in Atkinson, NE.



LOT 144

145

B3 RANCH, LLC

## LMBF MAJOR IMPACT L303

BD: 1/26/23 / ASA#: 4296588 / Tattoo: L303 / PB SM  
Yearling Bull / Black / Polled

LCDR IMPACT 134F

CDI MAJOR IMPACT 280H

CDI MISS RIMROCK 55E



REMINGTON LOCK N LOAD54U

OVAL F DIAMOND D674

OVAL F LINDA L320

CE	BW	WW	YW	MCE	Milk	MWW	Stay	Marb	BF	REA	API	TI
8.6	3.5	74.0	114.3	4.1	20.0	56.9	17.1	-0.03	-0.081	1.27	117.4	70.1

Deep bodied, big hipped and the perfect blazed face. This bull is the complete package!



CDI MAJOR IMPACT 280H - SIRE OF LOT 145

146

B3 RANCH, LLC

## LMBF GENESIS L304

BD: 1/26/23 / ASA#: 4296589 / Tattoo: L304 / PB SM  
Yearling Bull / Homo Black / Homo Polled

WS PROCLAMATION E202

LBR GENESIS G69

LBR DIANA D69



OVAL F COOL DUDE Y56

OVAL F BRIGHT FUTUREB418

OVAL F YIN Y26

CE	BW	WW	YW	MCE	Milk	MWW	Stay	Marb	BF	REA	API	TI
12.6	0.3	78.1	114.6	5.5	25.8	64.8	18.3	0.40	-0.055	1.07	154.1	87.2

This LBR Genesis G69 son is a high growth bull that will add frame to your calves. His pedigree is loaded with top females to produce replacement heifers. His calves will perform in the feedlot with EPDs in the top 15% of the breed in carcass weight, marbling and ribeye area.



LBR GENESIS G69 - SIRE OF LOT 146

147

B3 RANCH, LLC

## LMBF GENESIS L307

BD: 1/27/23 / ASA#: 4296590 / Tattoo: L307 / PB SM  
Yearling Bull / Homo Black / Homo Polled

WS PROCLAMATION E202

LBR GENESIS G69

LBR DIANA D69



OVAL F ALL TIME A322

OVAL F ERIN E729

OVAL F VIOLET X71

CE	BW	WW	YW	MCE	Milk	MWW	Stay	Marb	BF	REA	API	TI
10.5	1.6	93.6	140.1	5.6	28.8	75.5	20.3	0.5	-0.06	0.96	164.6	97.2

Another Genesis son that rose to the top of the group. This bull has outstanding EPDs with WW, Milk, MWW, Stayability, CW, and Marbling in the top 10 percent of the breed. And to have an API and TI both in the top 10%!



SCHOOLEY STANDOUT 27G - SIRE OF LOT 147



# YEARLING BULLS



**SCHOOLEY STANDOUT 27G - SIRE OF LOT 148**

**148**

B3 RANCH, LLC

## LMBF STANDOUT L313

BD: 1/28/23 / ASA#: 4296591 / Tattoo: L313 / PB SM  
Yearling Bull / Black / Homo Polled

OMF EPIC E27  
SCHOOLEY STANDOUT 27G  
CLRS BEAUTY QUEEN 420 B



OVAL F FELIX F812  
OVAL F JANICE J147  
OVAL F GIGI G951

CE	BW	WW	YW	MCE	Milk	MWW	Stay	Marb	BF	REA	API	TI
13.4	-0.9	71.0	100.6	7.1	23.6	59.0	16.5	0.32	-0.065	0.78	145.7	82.0

This bull is the total package. Eye appeal, growth, pedigree and to top it off, heifer safe! Out of a great first calf heifer who weaned off this 612lb bull calf.



**LOT 149**

**149**

BRACKER LIVESTOCK

## BRAC DOUBLE UP 21L

BD: 2/1/23 / ASA#: 4351188 / Tattoo: 21L / 3/4 SM 1/8 AN 1/8 MA  
Yearling Bull / Black / Polled

W/C DOUBLE DOWN 5014E  
WHF/JS/CCS DOUBLE UP G365  
WHF SUMMER 365C



GKS/SCHRADER 5440C  
CMBC CLEO TOO 571F  
CMBC PRESLEY 569C

CE	BW	WW	YW	MCE	Milk	MWW	Stay	Marb	BF	REA	API	TI
11.2	1.2	77.3	104.4	4.9	17.6	56.0	10.2	0.00	-0.066	0.90	98.9	69.9

Talk about a beef bull! Regardless of if you're selling them by the pound or retaining females that are sure to be in demand when it comes time to restore cow herd numbers, we feel this entry has a lot of value. He combines visual performance with a look of do-ability and productivity. Plus, his pedigree features some of our favorite females we've been fortunate enough to run.



**WS ENHANCEMENT 25H - SIRE OF LOT 150**

**150**

B3 RANCH, LLC

## LMBF ENHANCEMENT L324

BD: 2/1/23 / ASA#: 4296593 / Tattoo: L324 / PB SM  
Yearling Bull / Homo Black / Homo Polled

WS PROCLAMATION E202  
WS ENHANCEMENT 25H  
WS SWEET SIXTEEN F16



CLRS DIVIDEND 405D  
OVAL F JENNIFER J164  
OVAL F YIN Y26

CE	BW	WW	YW	MCE	Milk	MWW	Stay	Marb	BF	REA	API	TI
15.4	-1.4	80.0	124.2	8.3	28.0	67.9	17.1	0.42	-0.054	0.94	161.1	91.8

Top 10% in Calving Ease and Birthweight, Top 15% in MCE, Milk, Marbling, API and TI. This WS Enhancement 25H son is great all around. Out of a first calf Dividend daughter that weaned this bull at 617lbs, no creep!



**LOT 151**

**151**

BRACKER LIVESTOCK

## BRAC DOUBLE CUT 38L

BD: 3/8/23 / ASA#: 4351187 / Tattoo: 38L / PB SM  
Yearling Bull / Black / Polled

W/C EXECUTIVE ORDER 8543B  
W/C DOUBLE DOWN 5014E  
W/C MISS WERNING 5014C



CCR COWBOY CUT 5048Z  
ARROWH COWBOYS DREAM D112  
SS MAGNIFICENT DREAMS

CE	BW	WW	YW	MCE	Milk	MWW	Stay	Marb	BF	REA	API	TI
14.9	-0.9	74.4	96.3	6.7	24.2	61.3	15.8	0.10	-0.078	0.97	134.6	78.9

One of our favorites we've offered! We love this bull's combination of power and correctness of structure while still possessing a high-quality look. His dam, D112 or CeeCee as she's known around the farm, had a successful show career and is making a lot of strides for us in terms of raising cattle that perform in the real world and the showing. We expect this bull to do just that.



152

BRACKER LIVESTOCK

**BRAC RELENTLESS 34L**

BD: 3/4/23 / ASA#: 4351186 / Tattoo: 34L / PB SM  
Yearling Bull / Black / Polled

YARDLEY UTAH Y361  
W/C RELENTLESS 32C  
MISS WERNING KP 8543U



CCR COWBOY CUT 5048Z  
ARROWH COWBOYS DREAM D112  
SS MAGNIFICENT DREAMS

CE	BW	WW	YW	MCE	Milk	MWW	Stay	Marb	BF	REA	API	TI
12.2	1.8	74.1	94.5	6.4	21.2	58.2	14.5	0.23	-0.068	0.81	129.9	77.6

Our D112 donor strikes again! This pedigree is no stranger to the purple and his sire needs no introduction. A flush-mate was successfully campaigned by the Henderson Family of Iowa and capped off her career by being named Supreme Female at the Kansas Beef Expo Senior Heifer Show. We kept a full sib for use in our own herd and are ecstatic about the set of calves we have on the ground!



LOT 152

FULL-SIB

153

HIDDEN PINES CATTLE

**GNC MISS PAYWEIGHT**

BD: 3/15/20 / ASA#: 3969846 / Tattoo: 103 / 3/4 AN 1/4 CS  
Cow-Calf Pair



CE	BW	WW	YW	MCE	Milk	MWW	Stay	Marb	BF	REA	API	TI
12.2	-0.8	69.4	108.5	7.3	20.3	54.9	3.6	0.30	0.004	0.56	101.5	73.2

153A: Bull Calf / ASA#: N/A / DOB: 3/19/24 / Tattoo: M424  
Act. BW: 95# / Sired by PVF ALL TIME J190 (ASA#: 4034955)  
PE to HIDDEN PINES STANDOUT K259 (ASA# 4161051) from 4/29/24 to 5/20/24. Confirmed safe to PE dates with a bull calf.  
Cow is bred back with an ultrasound confirmed bull calf pregnancy.

*Bid Online!*

**DVAuction**

WWW.DVAUCTION.COM

154

B3 RANCH, LLC

**LMBF KARLEE K114**

BD: 2/27/22 / ASA#: 4146685 / Tattoo: K114 / PB SM  
Cow-Calf Pair / Black / Polled

CLRS AFTER SHOCK 604 A  
CLRS DIVIDEND 405D  
CLRS BONNIA 405 B



KOCH BIG TIMBER 685D  
LMBF EDEN G32  
OVAL F EDEN E731

CE	BW	WW	YW	MCE	Milk	MWW	Stay	Marb	BF	REA	API	TI
12.9	-0.6	76.9	118.4	6.9	22.5	60.8	16.3	0.16	-0.054	0.59	139.0	81.2

154A: Bull Calf / ASA#: Pending / DOB: 2/18/24 / Tattoo: L113  
Act. BW: 62# / Sired by LMBF Proclamation J101 (ASA#: 3968171)  
Sells open and ready to breed  
A nice first calf heifer doing a great job with her bull calf.



CLRS DIVIDEND 405D - SIRE OF LOT 154

155

BRACKER LIVESTOCK

**BRAC EPIC DREAMS 949K**

BD: 3/8/22 / ASA#: 4351185 / Tattoo: 949K / PB SM  
Cow-Calf Pair / Black / Polled

WS ALL-AROUND Z35  
OMF EPIC E27  
OMF TIME LESS B100



CNS PAYS TO DREAM T759  
BRAC ANGELS DREAM 949G  
GKS ANGEL EYES 49C

CE	BW	WW	YW	MCE	Milk	MWW	Stay	Marb	BF	REA	API	TI
15.6	-1.2	72.5	107.1	9.2	18.3	54.4	17.5	0.21	-0.066	0.72	146.5	80.6

155A: Heifer Calf / ASA#: 4351189 / DOB: 3/20/24 / Tattoo: 949M  
Act. BW: 70# / Sired by BRAC Night Watch H856 (ASA#: 3809111)  
Sells open and ready to breed  
This one comes from the top of our first calf heifer pen! Her granddam, GKS Angel Eyes 49C, has more than earned her keep and she is out of a young Pays to Dream cow that has excelled in production. This Epic female has a beautiful udder and quality from nose to tail. Sells with a beautiful heifer calf at side!



LOT 155



# COW-CALF PAIRS



LRS TOP TEN 104A - PATERNAL GRANDSIRE OF LOT 156

156

HIDDEN PINES CATTLE

## GNC MISS TOP TEN K208

BD: 2/21/22 / ASA#: 4138350 / Tattoo: K208 / 3/8 SM 5/8 AN  
Cow-Calf Pair / Black / Polled

LRS TOP TEN 104A

RC TOP TEN 407F

RC MISS TOP GRADE 481B



180

CE	BW	WW	YW	MCE	Milk	MWW	Stay	Marb	BF	REA	API	TI
13.2	-3.2	61.6	99.7	7.3	19.2	49.9	10.4	0.48	-0.016	0.27	127.8	75.6

156A: Bull Calf / ASA#: N/A / DOB: 2/27/24 / Tattoo: M417

Act. BW: 61# / Sired by GNC PATRIARCH 1517J (ASA#: 4023278)

PE to HIDDEN PINES STANDOUT K259 (ASA# 4161051) from 4/29/24 to 5/20/24.

RC TOP TEN 407F is a very maternal sire. She sells with her heifer calf at side. This is a 3N1.



LOT 157

157

BRACKER LIVESTOCK

## BRAC BLACK JEWEL 003K

BD: 2/20/22 / ASA#: 4351184 / Tattoo: 003K / PB SM  
Cow-Calf Pair / Black / Homo Polled

HOOK`S XAVIER 14X

HOOK`S BLACK HAWK 50B

HOOK`S YVETTE 100Y



W/C RELENTLESS 32C

BRAC BLACK JEWEL 003H

EKHCC RED JEWEL 760

CE	BW	WW	YW	MCE	Milk	MWW	Stay	Marb	BF	REA	API	TI
12.3	0.8	79.5	117.5	5.9	19.0	58.7	15.2	0.15	-0.054	1.25	134.0	81.0

157A: Heifer Calf / ASA#: 4351190 / DOB: 3/20/23 / Tattoo: 003M

Act. BW: 80# / Sired by BRAC Night Watch H856 (ASA#: 3809111)

Sells open and ready to breed

A first calf heifer with a lot of future and a pedigree with a different spin on some of the Simmental breed's greatest animals. Red Jewel, her granddam, has proven herself as one of the unforgettable matriarchs of the breed and her grandsire, Relentless, will go down as one of the most prolific show heifer sires of his generation. Watch her video or come see her in person to check out the stylish heifer calf she's raising!



W/C BANKROLL 811D - PATERNAL GRANDSIRE OF LOT 158A

158

B3 RANCH LLC

## LMBF JENNIFER J134

BD: 3/14/21 / ASA#: 3968174 / Tattoo: J134 / PB SM  
Cow-Calf Pair / Black / Polled

CDI INNOVATOR 325D

SAS INNOVATOR G216

BAR QH/SAS PRINCESS E216



TRIPLE C SINGLETARY S3H

ASR BLACK SCAMP A3218

ASR BLACK SCAMP N321

CE	BW	WW	YW	MCE	Milk	MWW	Stay	Marb	BF	REA	API	TI
9.3	3.5	88.6	136.4	6.8	25.7	69.9	17.0	0.22	-0.084	1.02	137.6	85.7

158A: Bull Calf / ASA#: Pending / DOB: 4/9/24 / Tattoo: M109

Act. BW: 78# / Sired by LMBF Banroll H45 (ASA#: 3805212)

Sells open and ready to breed

J134 is a good looking, young cow that is doing a great job with her bull calf out of our herd bull LMBF Bankroll H45.



CLRS DIVIDEND 405D - SIRE OF LOT 159

159

B3 RANCH LLC

## LMBF JOSEY J110

BD: 2/19/21 / ASA#: 3968140 / Tattoo: J110 / PB SM  
Cow-Calf Pair / Homo Black / Polled

CLRS AFTER SHOCK 604 A

CLRS DIVIDEND 405D

CLRS BONNIA 405 B



GW COMFORT ZONE 651Y

OVAL F BLOSSOM B470

OVAL F TEELA T754

CE	BW	WW	YW	MCE	Milk	MWW	Stay	Marb	BF	REA	API	TI
14.3	-1.5	69.7	109.1	5.0	23.1	57.9	17.6	0.04	-0.072	0.72	136.4	75.7

159A: Heifer Calf / ASA#: Pending / DOB: 4/15/24 / Tattoo: M112

Act. BW: 84# / Sired by LMBF Bankroll H45 (ASA#: 3805212)

Sells open and ready to breed

A great CLRS Dividend daughter out of an incredibly productive Comfort Zone cow. Her heifer calf sired by our Bankroll son will definitely be in your keeper pen.



# COW-CALF PAIRS

160

B3 RANCH LLC

## OVAL F JASMINE J134

BD: 2/17/21 / ASA#: 3960876 / Tattoo: J134 / PB SM  
Cow-Calf Pair / Homo Black / Polled

CLRS DIVIDEND 405D  
OVAL F GARTH G920  
OVAL F VIOLET X71



PROFIT  
OVAL F ELISE E763  
OVAL F LINDA L320

CE	BW	WW	YW	MCE	Milk	MWW	Stay	Marb	BF	REA	API	TI
8.7	3.6	74.3	110.1	3.5	20.8	57.9	20.2	0.09	-0.085	0.67	128.6	72.3

160A: Heifer Calf / ASA#: Pending / DOB: 4/26/24 / Tattoo: M115  
Act. BW: 69# / Sired by SAS Innovator G216 (ASA#: 3620326)  
Sells open and ready to breed

J134 has a great pedigree, including CLRS Dividend and Profit. She's doing an incredible job with her heifer calf out of our herd bull SAS Innovator G216.



PROFIT - MATERNAL GRANDSIRE OF LOT 160

161

HIDDEN PINES CATTLE

## MEAD MISS V936

BD: 11/18/20 / ASA#: 4134893 / Tattoo: V936 / PB AN  
Cow-Calf Pair / Black / Polled

CONNEALY STIMULUS 8419  
CONNEALY SPUR  
JAZZA OF CONANGA 8594



CONNEALY IMPRESSION  
MEAD MISS K324  
MEAD MISS I119

CE	BW	WW	YW	MCE	Milk	MWW	Stay	Marb	BF	REA	API	TI
11.4	0.8	79.0	128.3	8.4	28.0	66.8	15.6	0.61	0.041	0.42	126.9	74.8

161A: Bull Calf / ASA#: N/A / DOB: 2/12/24 / Tattoo: m415  
Act. BW: 95# / Sired by PVF ALL TIME J190 (ASA#: 4034955)  
PE to HIDDEN PINES STANDOUT K259 (ASA# 4161051) from 4/29/24 to 5/20/24.

MEAD MISS V936 is a purebred Angus cow. TJ Gold bull calves out of our angus cows averaged close to \$10,000 at the River Creek Farms bull sale in February of this year. We only offer these cows as we are purchasing more females direct from River Creek to become full time cooperators.



CONNEALY SPUR - SIRE OF LOT 161

162

B3 RANCH LLC

## OVAL F MISS AT BECCA F860

BD: 3/9/18 / ASA#: 3465840 / Tattoo: F860 / PB SM  
Cow-Calf Pair / Homo Black / Homo Polled

MCM TOP GRADE 018X  
OVAL F ALL TIME A322  
OVAL F YIN Y26



GW-WBF SUBSTANCE 820Y  
HOOK`S BECCA 2B  
HOOK`S UPBEAT 55U

CE	BW	WW	YW	MCE	Milk	MWW	Stay	Marb	BF	REA	API	TI
9.4	1.9	77.4	114.4	7.0	23.4	62.0	19.5	0.34	-0.084	0.82	146.0	82.9

162A: Due 5/22/24 to SAS Innovator G216 (ASA# 3620326). Calf information available sale day.

Sells open and ready to breed

F860 has always been a great looking, productive cow that belongs in the front pasture. Her calves are always in the keeper pen. She should have a calf by saie day out of our herd bull SAS Innovator G216.



MCM TOP GRADE 018X - PATERNAL GRANDSIRE OF LOT 162

163

B3 RANCH LLC

## OVAL F ERIN E729

BD: 2/5/17 / ASA#: 3237138 / Tattoo: E729 / PB SM  
Cow-Calf Pair / Homo Black / Homo Polled

MCM TOP GRADE 018X  
OVAL F ALL TIME A322  
OVAL F YIN Y26



OVAL F RINGLEADER R579  
OVAL F VIOLET X71  
OVAL F LINDA L320

CE	BW	WW	YW	MCE	Milk	MWW	Stay	Marb	BF	REA	API	TI
11.4	1.4	75.8	111.1	6.5	35.9	73.7	22.3	0.20	-0.095	0.87	147.1	80.8

163A: Bull Calf / ASA#: Pending / DOB: 1/31/24 / Tattoo: M426

Act. BW: 91# / Sired by Ruby's Turnpike 771E (ASA#: 3282048)

Sells open and ready to breed

E729 has been one of our top bull producers. But we can't keep all the good ones! If you need proof, just check out her last year's calf, L307 Genesis son, selling in this sale. Her Turnpike bull calf is going to be a stout one.



RUBY'S TURNPIKE 771E - SIRE OF LOT 163A



Bid Online!

**DVAuction**

WWW.DVAUCTION.COM

164

HIDDEN PINES CATTLE

11

BD: 3/1/13 / ASA#: 3969849 / Tattoo: 11 / PB AN  
Cow-Calf Pair

X

CE	BW	WW	YW	MCE	Milk	MWW	Stay	Marb	BF	REA	API	TI
15.5	-3.5	53.5	81.8	9.4	26.1	52.7	3.6	0.53	0.020	0.09	100.5	62.9

164A: Heifer Calf / ASA#: N/A / DOB: 1/22/24 / Tattoo: M422  
Act. BW: 71# / Sired by MEAD MAGNITUDE X134 (ASA#: 4186669)  
PE to JLG1 MR BJ H037 (ASA# 3861840) from 5/2/24 to 5/20/24.  
This is a non registered PB Angus cow selling with a heifer calf pasture exposed to a Sim Angus bull who is homo polled and homo black.

165

B3 RANCH LLC

**OVAL F COOL DIVA Y48**

BD: 4/17/11 / ASA#: 2602299 / Tattoo: Y48 / PB SM  
Cow-Calf Pair / Homo Black / Homo Polled

WHEATLAND BULL 680S  
NEW TREND WAY COOL 6W  
KEYSTONE RADIANCE 13R

X

SAC MR MT 73G  
OVAL F LINDA L320  
OVAL F JASMINE J232

CE	BW	WW	YW	MCE	Milk	MWW	Stay	Marb	BF	REA	API	TI
6.9	6.0	64.4	99.8	1.7	25.9	58.0	21.3	-0.10	-0.100	1.11	111.6	60.0

165A: Heifer Calf / ASA#: Pending / DOB: 4/12/24 / Tattoo: M111  
Act. BW: 78# / Sired by LMBF Bankroll H45 (ASA#: 3805212)  
Sells open and ready to breed  
Don't let her age fool you, Y48 has longevity bred into her. She's a direct daughter of the great Oval F Linda L320, the matriarch of the Oval F cows. To top it off she has a perfectly marked baldy heifer calf out of our W/C Bankroll son, who makes tremendous females!



WHEATLAND BULL 680S - PATERNAL GRANDSIRE OF LOT 165

166

HIDDEN PINES CATTLE

**JLG1 MS MAIN EVENT H027**

BD: 8/29/20 / ASA#: 3861835 / Tattoo: H027 / 1/2 SM 1/2 AN  
Bred Cow / Homo Black / Homo Polled

MR NLC UPGRADE U8676  
TJ MAIN EVENT 503B  
TJ MISS NEW DAY U14

X

MUSGRAVE AVIATOR  
JLG1 MS AVIATOR F815  
LRS MS DAKOTA 559R

CE	BW	WW	YW	MCE	Milk	MWW	Stay	Marb	BF	REA	API	TI
11.6	0.0	75.7	113.5	7.2	27.8	65.6	14.2	0.26	-0.038	0.66	124.3	77.6

AI'd to KBHR HONOR H060 (ASA# 3789447) on 12/1/23. Confirmed safe to AI date with a bull calf. JLG1 MS MAIN EVENT H027 is a good looking daughter of TJ MAIN EVENT 503B out of a MUSGRAVE AVIATOR cow. She is homo black and homo polled and has already had one calf so she knows what to do. She is ultra sounded safe to the AI date with a KBHR HONOR H060 bull calf pregnancy. We are only selling this young female because we are transitioning to all River Creek Females to produce bulls as a cooperator for the Mertz family.



TJ MAIN EVENT 503B - SIRE OF LOT 166

167

HIDDEN PINES CATTLE

**JLG1 MS COLONEL G928**

BD: 9/19/19 / ASA#: 3621013 / Tattoo: G928 / 1/2 SM 1/2 AN  
Bred Cow / Homo Black / Homo Polled

BALDRIDGE XPAND X743  
BALDRIDGE COLONEL C251  
BALDRIDGE ISABEL Y69

X

HPF OPTIMIZER A512  
JLG1 MS OPTIMIZER E751  
LRS MS DAKOTA 559R

CE	BW	WW	YW	MCE	Milk	MWW	Stay	Marb	BF	REA	API	TI
9.6	2.0	85.2	149.7	5.0	26.7	68.5	13.4	0.15	-0.057	0.64	118.7	79.3

AI'd to KBHR HONOR H060 (ASA# 3789447) on 11/19/23. Confirmed safe to AI date with a bull calf. JLG1 MS COLONEL G928 is a half blood daughter of BALDRIDGE COLONEL C251 who is homo black and homo polled. She is ultra sounded safe to the AI date with a bull calf pregnancy.



KBHR HONOR H060 - SERVICE SIRE OF LOT 167



BRED COWS

168

HIDDEN PINES CATTLE

**JLG1 MS AVIATOR G926**

BD: 9/12/19 / ASA#: 3621014 / Tattoo: G926 / 3/8 SM 5/8 AN  
Bred Cow / Homo Black / Homo Polled

KOUPALS B&B IDENTITY  
MUSGRAVE AVIATOR  
MCATL FOREVER LADY 1429-138



HPF OPTIMIZER A512  
GLG MS OPTIMIZER E744  
RHODES MINA C84

CE	BW	WW	YW	MCE	Milk	MWW	Stay	Marb	BF	REA	API	TI
16.8	-3.5	69.5	120.0	11.9	28.3	63.9	11.0	0.32	0.021	0.51	130.1	78.8

AI'd to KBHR HONOR H060 (ASA# 3789447) on 12/21/23. Confirmed safe to AI date with a bull calf. JLG1 MS AVIATOR G926 is a great looking daughter of MUSGRAVE AVIATOR. She is homo polled and homo black. She is safe to the industry leading KBHR HONOR H060 and is ultra sounded to have a bull calf. All the work is done. I'm only selling her because of my commitment to changing over to all River Creek Farms females.



169

TERRY OLIVER

**HAERR LADY KATE 2002H - 807**

BD: 9/6/20 / AAA#: 19862126 / Tattoo: 2002 / PB AN  
Bred Cow / Black / Polled

SITZ DASH 10277  
BARSTOW CASH  
BARSTOW QUEEN W16



LD CAPITALIST 316  
HAERR LADY CAP 807F- 617D  
SHFI WAR LADY 617D OF 312A

CED	BW	WW	YW	CEM	Milk	MW	Doc	Marb	RE	Fat	\$W	\$C
+2	+4.6	+95	+159	+7	+14	+143	+18	+23	+76	+0.29	+61	+241

AI'd to KBHR DIFFERENT DEAL K150 (ASA# 4104268) on 5/13/24. Too close to confirm bred.

Haerr Lady Kate 2002H - 807 is a big powerful Angus female with a million-dollar disposition. She will be AI'd to KBHR DIFFERENT DEAL K150 who is a new baldy bull that will take the breed by storm. He is Top 1% API & Top 1% and has a lot of quality and is a true unicorn. This calf will be really nice.



# BRED HEIFERS



**LOT 170**

**170**

TYLER HAERR/HAERR FARMS

## COON 656 PATIENCE 284

BD: 9/25/22 / AAA#: 20573284 / Tattoo: 284 / PB AN  
Bred Heifer / Black / Polled

BRIARWOOD TOP GAME 6013  
COON 646 TOP GAME 969  
COON 152 BURGESS 646



K C F BENNETT HOMESTEAD  
COON 355 PATIENCE 656  
COON 052 PATIENCE 355

CED	BW	WW	YW	CEM	Milk	MW	Doc	Marb	RE	Fat	\$W	\$C
+8	+9	+40	+82	+8	+33		I+18	I+.68	I+.71	I+.011	+41	+243

AI'd to SydGen Enhance (AAA# 18170041) on 11/4/23. Confirmed safe to AI date with a bull calf. Nice calling ease heifer here that is going to make a great cow for years to come. Qualifies for Certified Angus Beef. DNA Pending.



**LOT 171**

**171**

TYLER HAERR/HAERR FARMS

## HAERR MISSFOREVER 2251K-1404

BD: 8/28/22 / AAA#: 20559223 / Tattoo: 2251 / PB AN  
Bred Heifer / Black / Polled

SITZ UPWARD 307R  
PLATTEMERE WEIGH UP K360  
BARBARA OF PLATTEMERE 337



CONNELY REFLECTION  
DHN MISS FOREVER 1404-204  
DHN FOREVER FACTOR 204-872

CED	BW	WW	YW	CEM	Milk	MW	Doc	Marb	RE	Fat	\$W	\$C
+11	+4	+66	+124	+11	+26	+54	+18	+52	+76	+0.18	+65	+260

PE to Haerr Chesapeake 2234K (AAA# 20474534) from 11/10/23 to 12/30/23. Confirmed safe to PE dates. This Weigh Up daughter is broody just like her mother! Loads of mass and shape to this Reflection granddaughter. Double-digit calving ease with balanced EPD's all the way through.



**LOT 172**

**172**

TYLER HAERR/HAERR FARMS

## 2223

BD: 9/2/22 / Tattoo: 2223 / Crossbred  
Bred Heifer / Black / Polled

AI'd to SydGen Enhance (AAA# 18170041) on 11/4/23. Confirmed safe to AI date with a bull calf. Easy fleshing heifer with many years ahead of her. She is 3/4 Angus & 1/4 Hereford. Came easy at 69 pounds out of GAR Surefire and a granddaughter of SydGen Trust. Calf will be 7/8 Angus.



**LOT 173**

**173**

TYLER HAERR/HAERR FARMS

## 2230

BD: 9/5/22 / Tattoo: 2230 / Crossbred  
Bred Heifer / Black / Polled

AI'd to SydGen Enhance (AAA# 18170041) on 11/4/23. Confirmed safe to AI date. Real nice heifer here that has all the potential to be around for awhile. She is 3/4 Angus & 1/4 Hereford. Easy calving at 50 pounds out of GAR Surefire and she's a granddaughter of SydGen Trust. Calf will be 7/8 Angus.



# BRED & OPEN HEIFERS

174

HIDDEN PINES CATTLE

## GNC MISS EASTWOOD K277

BD: 10/4/22 / ASA#: 4161042 / Tattoo: K277 / 3/8 SM 3/8 AN 1/4 GV  
Bred Heifer / Black / Polled

HOOK'S EASTWOOD 30C  
RC EASTWOOD 104G  
RC MISS ADDED VALUE 095B



SKYS SAM 3187A  
BHSF MS BHSF WITCH 059F  
BHSF MS BHSF WITCH 592C

CE	BW	WW	YW	MCE	Milk	MWW	Stay	Marb	BF	REA	API	TI
10.5	2.1	82.1	122.5	6.1	24.7	65.7	14.2	0.40	-0.052	0.48	125.5	80.3

AI'd to KBHR HOMELANDER J071 (ASA# 3943783) on 11/19/23. Confirmed safe to AI date with a bull calf. GNC MISS EASTWOOD K277 is a registered 3-way cross Sim Angus female who is bred to the best Sim Angus bull in the business KBHR HOMELANDER J071. His calves are phenomenal and will set a new standard for what is possible making Sim Angus. The first Homelanders will be sale features for everyone who was lucky enough to get semen on him. Buy her with confidence. The bull calf will pay for the pair. She is safe to the AI date with a bull calf pregnancy.



KBHR HOMELANDER J071 - SERVICE SIRE OF LOT 174

175

HIDDEN PINES CATTLE

## JLG1 MS GOLD K228

BD: 8/28/22 / ASA#: 4117704 / Tattoo: K228 / 3/4 SM 1/4 AN  
Bred Heifer / Homo Black / Homo Polled

HOOK'S EAGLE 6E  
TJ GOLD 274G  
TJ 12C



HOOK'S YELLOWSTONE 97Y  
RHODES MINA C84  
RHODES MINA 598

CE	BW	WW	YW	MCE	Milk	MWW	Stay	Marb	BF	REA	API	TI
13.6	-2.4	74.5	120.7	8.5	29.3	66.6	15.6	0.59	-0.019	0.54	153.1	88.9

AI'd to KBHR HONOR H060 (ASA# 3789447) on 12/18/23. Confirmed safe to AI date with a bull calf. JLG1 MS GOLD K228 is a TJ GOLD 274G who makes awesome daughter and K228 is not an exception. K228 is an homo black and homo polled 3/4 female. She sells safe to the AI date to KBHR HONOR H060 with a bull calf pregnancy. Her calf will be a purebred homo black and homo polled bull calf with outstanding EPDs and Indexes. All the hard work has been done!



TJ GOLD 274G - SIRE OF LOT 175

176

HIDDEN PINES CATTLE

## GNC MISS BJ K261

BD: 9/12/22 / ASA#: 4161048 / Tattoo: K261 / 1/2 SM 1/2 AN  
Bred Heifer / Homo Black / Homo Polled

PHT BIG JAKE 40F  
JLG1 MR BJ H037  
GLG MS OPTIMIZER E744



MUSGRAVE AVIATOR  
JLG1 MS AVIATOR G926  
GLG MS OPTIMIZER E744

CE	BW	WW	YW	MCE	Milk	MWW	Stay	Marb	BF	REA	API	TI
17.2	-3.3	74.8	121.1	10.8	27.5	65.8	14.7	0.42	0.012	0.51	148.3	86.0

AI'd to KBHR HONOR H060 (ASA# 3789447) on 11/19/23. Confirmed safe to AI date with a heifer calf. GNC MISS BJ K261 is a homo polled and homo black outcross female out of a MUSGRAVE AVIATOR cow. She sells safe to the AI date with a heifer calf pregnancy to the great KBHR HONOR H060.



KBHR HONOR H060 - SERVICE SIRE OF LOTS 176 & 177

177

TYLER HAERR/HAERR FARMS

## HAERR GEORGINA 2317L - 536

BD: 8/4/23 / AAA#: 20795150 / Tattoo: 2317 / PB AN  
Open Heifer / Black / Polled

CONNEALY CLARITY  
POSS REMINGTON  
POSS BLUEBLOOD 6502



PVF INSIGHT 0129  
DEPPE INSGHT GEORGINA 536  
CHAMPION HILL GEORGINA 107

CED	BW	WW	YW	CEM	Milk	MW	Doc	Marb	RE	Fat	\$W	\$C
+12	+2	+63	+110	+8	+25	+54	+15	+63	+1.01	+0.43	+63	+293

All the right angles in this double digit calving ease female. Correct on her feet and legs with loads of dimension and mass! Her Insight dam is nothing short of spectacular. Can't make them any better.



LOT 177



# BRED HEIFERS



LOT 178

178

TYLER HAERR/HAERR FARMS

## HAERR MISSFOREVER 2352L-1404

BD: 8/25/23 / AAA#: 20905497 / Tattoo: 2352 / PB AN  
Open Heifer / Black / Polled

SITZ UPWARD 307R  
PLATTEMERE WEIGH UP K360  
BARBARA OF PLATTEMERE 337



CONNEALY REFLECTION  
DHN MISS FOREVER 1404-204  
DHN FOREVER FACTOR 204-872

CED	BW	WW	YW	CEM	Milk	MW	Doc	Marb	RE	Fat	\$W	\$C
+11	-1.2	+51	+88	+10	+28	-10	+8	+31	+45	+0.005	+65	+219

This Weigh Up daughter is long hipped with a nice look. Double-digit calving ease with lots of shape. Her 1404 donor dam is a long, low ground sow. Lots of mass and dimension in this Reflection dam.



LOT 179

179

TYLER HAERR/HAERR FARMS

## HAERR ROYAL LADY 2365L - 615

BD: 9/1/23 / AAA#: 20902564 / Brand: 2365 / PB AN  
Open Heifer / Black / Polled

CONNEALY CLARITY  
POSS REMINGTON  
POSS BLUEBLOOD 6502



SAV TEN SPEED 3022  
DEPPE ROYAL LADY 615  
ONEILLS ROYAL LADY 42

CED	BW	WW	YW	CEM	Milk	MW	Doc	Marb	RE	Fat	\$W	\$C
+14	+8	+62	+112	+9	+27	+73	+17	+95	+73	-.026	+60	+287

This Remington female has lots of look with double-digit calving ease! Real nice set of EPDs that brings it all back together in a stylish package. Her 615 donor does so many things right on paper and on foot! Super cool design and shape and she passes it on with her calves!



LOT 180

180

TYLER HAERR/HAERR FARMS

## HAERR MISS EMY 2325L - 55

BD: 9/2/23 / AAA#: 20792890 / Brand: 2325 / PB AN  
Open Heifer / Black / Polled

PVF BLACKLIST 7077  
PVF DLX KING PIN 0058  
PVF LUCY 4189



EXAR UPSHOT 0562B  
SHFI MISS UPSHOT 55C OF W889  
WILT EMY ENDURANCE 889

CED	BW	WW	YW	CEM	Milk	MW	Doc	Marb	RE	Fat	\$W	\$C
+11	-.3	+50	+93	+3	+22	+29	+14	+57	+48	-.009	+50	+224

This King Pin female brings it all together at every angle. Elegant fronted, big middled with a good shape to her hip! Double-digit calving ease from a dam that we've kept every female and flushed many times!



LOT 181

181

TYLER HAERR/HAERR FARMS

## HAERR MISS TILLIE 2369L - 214

BD: 9/6/23 / AAA#: 20903329 / Brand: 2369 / PB AN  
Open Heifer / Black / Polled

PVF INSIGHT 0129  
PVF BLACKLIST 7077  
PVF BLACKBIRD 3070



VIN-MAR O'REILLY FACTOR  
CB TILLIE 214  
EXAR TILLIE 0338

CED	BW	WW	YW	CEM	Milk	MW	Doc	Marb	RE	Fat	\$W	\$C
+10	+3	+52	+95	+7	+25	+66	+23	+14	+86	-.037	+49	+219

It won't be hard to find this Blacklist female at the barn! She stands out with a flashy look and loads of potential. She is double-digit calving ease and will go on to do great things as a production female. Her 214 donor dam has an extra rib with a wide top and very fertile, averaging 16 embryos per flush.





182

JARED WERNING CATTLE

**JWC MISS 136J**

BD: 4/6/21 / ASA#: 4070304 / Tattoo: 136J / 3/4 SM 1/4 AN  
 Flush / Homo Black / Homo Polled

BAR CK NO EQUAL 4118B  
 BAR CK 4118B 8102F  
 BAR CK MS 3016A 6018D



W/C EXECUTIVE ORDER 8543B  
 W/C MISS WERNING 9003G  
 W/C RJ MISS 8543 6112D

CE	BW	WW	YW	MCE	Milk	MWW	Stay	Marb	BF	REA	API	TI
18.0	-3.3	77.6	123.1	10.9	21.9	60.6	15.7	0.69	-0.026	0.52	167.8	94.6

*Selling one IVF cycle. Guarantee of 5 embryos with no cap with a guarantee of 2 pregnancies. IVF aspiration date of May 30, 2024.*

JWC MISS 136J is the best homo black and homo polled daughter of W/C Miss Werning 9003G. 9003G's dam is a Lock N Load x 8543U, which would be a full-sister to Angel 2870Z. 136J's maternal granddam is a full-sister in blood to the dam of Angel 7113E, Angel 7114E and Angel 7110E donors. If you trace back a further generation, you will find the highest revenue generating female in the history of the breed, Miss Werning KP 8543U. JWC MISS 136J has all the looks from the great females in her pedigree. Plus, she has the figures that are marketable to the most discerning breeders who raise cattle to be propagated making the best cattle in the beef industry. This is the first opportunity and the last this spring to acquire genetics out of arguably the most complete female from this great lineage of cows. This flush if done to the right bull will be talked about in Simmental Folklore long after we are all done raising cattle.



183

JARED WERNING CATTLE  
**KBHR DIFFERENT DEAL K150**

BD: 3/23/22 / ASA#: 4104268 / Tattoo: K150 / PB SM  
Semen / Homo Black / Homo Polled

HHS MR 847D  
**KBHR REVOLUTION H071**  
WS MISS SUGAR C4



WS PROCLAMATION E202  
**KBHR DEBUTANTE H113**  
BAR CK MS X38 106Z

CE	BW	WW	YW	MCE	Milk	MWW	Stay	Marb	BF	REA	API	TI
14.3	-1.4	88.4	138.5	9.3	25.2	69.3	19.1	0.81	-0.034	0.73	188.1	105.6

Selling 10 units of conventional semen. Available sale day or shipped from Nichols Cryo Genetics or 605 Sires.

Sometimes it is better to be lucky than good. I called Jeremie Ruble from Ruble Cattle Services about 15 minutes before the start of the Keller Broken Heart Sale two years ago. He had been stuck for a day and a half on the interstate then his starter went out of his vehicle the morning of the sale so the folks from English Oaks Ranch gave him a ride to the sale. I asked about what there was in the sale that was a baldy heifer bull. I'll be damned but Jeremie found me a unicorn in KBHR DIFFERENT DEAL K150. His EPD profile is unmatched for a baldy purebred and the calves come easy and are sexy looking. Jeremie tells me he thinks he's the best purebred blaze face son of the great KBHR REVOLUTION H071 bull. His dam KBHR DEBUTANTE H113 is the leading donor for Keller's Broken Heart Ranch. All of our customers who purchased bred heifers from us ordered semen on him to use at home. We recently had to bring him back to 605. Get in on the front end of using semen on this magnificent beast. He'll make ya famous! Semen will be at the sale in the RCS tank and can be shipped from Nichols Cryo Genetics or 605 Sires.



LOT 183

184

JARED WERNING CATTLE  
**W/C JWC MAINSTREAM 885J**

BD: 4/18/21 / ASA#: 3974315 / Tattoo: 885J / 1/2 SM 1/2 AN  
Semen / Homo Black / Homo Polled

TJ MAIN EVENT 503B  
**W/C MAINSTAY 355F**  
W/C MISS WERNING 253Z



W/C UNITED 956Y  
**W/C MISS WERNING 885F**  
MISS WERNING 985W

CE	BW	WW	YW	MCE	Milk	MWW	Stay	Marb	BF	REA	API	TI
13.4	0.6	90.6	146.7	6.9	29.3	74.5	12.4	0.24	-0.031	1.02	129.3	86.9

Selling 10 units of conventional semen. Available sale day or shipped from Nichols Cryo Genetics or 605 Sires.

W/C JWC MAINSTREAM 885J is a Homo Black & Homo Polled stud of a half blood bull. If you want great looking cattle with all the bells and whistles buy him and use him hard. Jeremie loved him when he made herd visits at sale time.



LOT 184

185

JARED WERNING CATTLE  
**ZTGC JUST CUZ 52K**

BD: 3/4/22 / ASA#: 4063644 / Tattoo: 52K / PB SM  
Semen / Homo Black / Homo Polled

CCR ANCHOR 9071B  
**W/C NIGHT WATCH 84E**  
MISS WERNING KP 8543U



GEFF COUNTY O  
**ZTGC THE BLAZE**  
MS KATINKA 1837Y

CE	BW	WW	YW	MCE	Milk	MWW	Stay	Marb	BF	REA	API	TI
10.8	1.4	79.9	111.1	5.7	18.8	58.2	14.4	0.37	-0.059	0.87	140.0	85.1

Selling 10 units of conventional semen. Available sale day or shipped from Nichols Cryo Genetics or 605 Sires.

ZTGC JUST CUZ 52K is a striking blaze face purebred Simmental bull who can be used on heifers to make his calves fancy. We recommend if you are in the area go look at him at 605 Sires. He is one of the most impressive bulls of any breed. We expect his calves to be freak fronted, sound, perfect structured and have a beautiful blaze face. We've used him hard and you should too.



LOT 185



186

RIVER CREEK FARMS

**TJ NORTH 528L**

BD: 2/4/23 / ASA#: 4217486 / Tattoo: 528L / 1/2 SM 1/2 AN  
Semen / Homo Black / Homo Polled

S A V RAINFALL 6846

**SQUARE B TRUE NORTH 8052**  
ELBANNA OF CONANGA 1209



CCR COWBOY CUT 5048Z

**TJ 28E**  
TJ MS 38W

CE	BW	WW	YW	MCE	Milk	MWW	Stay	Marb	BF	REA	API	TI
21.3	-3.8	73.2	114.9	12.4	29.8	65.9	17.2	0.65	0.009	0.19	170.3	91.4

**Selling 10 units of conventional semen. Stored at KABSU Manhattan, KS.**  
Phenotypically, NORTH was our favorite Sim-Angus bull to sell in 2024. He's a bull that epitomizes the perfect blend of smooth skeletal structure, commanding presence, and remarkable style. Genomically, NORTH boasts an elite top 1% calving ease, and offers a rare combination of ease of heifer-safe calving ease, growth and marbling. We are confident in his ability to sire replacement heifers and bull calves that excel in both quality and marketability. Our commitment to utilizing NORTH extensively on our own heifers underscores our confidence in his calving ease prowess. Moreover, he's being used heavily at Triangle J Ranch this spring which speaks volumes about his appeal and potential in the industry. Expect NORTH to elevate your breeding program, delivering offspring that command top dollar and exceed expectations.



LOT 186

187

RIVER CREEK FARMS

**TERS KODIAK 206K**

BD: 1/20/22 / ASA#: 4042365 / Tattoo: 206K / PB SM  
Semen / Homo Black / Homo Polled

GIBBS 7382E BROAD RANGE

**GIBBS 9114G ESSENTIAL**  
GIBBS 7153E STAR 3136A



MCM TOP GRADE 018X

**TECS EXTREME 709E**  
HOOK`S XCELLENCE 87X

CE	BW	WW	YW	MCE	Milk	MWW	Stay	Marb	BF	REA	API	TI
16.8	-1.6	80.0	127.6	10.6	32.1	72.0	21.5	0.46	-0.038	0.72	174.2	93.2

**Selling 10 units of conventional semen. Stored at KABSU Manhattan, KS.**  
Kodiak, was the \$110,000 high selling bull in the 2023 Bred For Balance Sale. We partnered with Schooley Cattle to bring this bull to River Creek. As the preeminent son of Gibbs Essential, Kodiak stands as a testament to the power of performance-driven genetics in creating a harmonious blend of balance and eye appeal, both phenotypically and genetically. We believe he will sire bull calves that increase carcass quality and size without sacrificing maternal excellence. To date, no frozen semen has been offered. Semen is now available.



LOT 187

188

RIVER CREEK FARMS

**RUBYS QUADRANT 210K**

BD: 1/1/22 / ASA#: 4135953 / Tattoo: 210K / PB SM  
Semen / Homo Black / Homo Polled

WS PROCLAMATION E202

**LBR GENESIS G69**  
LBR DIANA D69



WS ALL-AROUND Z35

**RUBYS LINDA 721E**  
RUBYS LINDA 341A

CE	BW	WW	YW	MCE	Milk	MWW	Stay	Marb	BF	REA	API	TI
17.3	-0.4	106.1	162.8	8.6	25.7	78.7	19.2	0.48	-0.047	1.29	180.2	108.1

**Selling 10 units of conventional semen. Stored at KABSU Manhattan, KS.**  
Our \$80,000 high selling selection in the 2023 Ruby Cattle Co. Bull Sale. QUADRANT is already garnering attention from cattlemen quite literally around the globe. Genomically QUADRANT possesses every trait our most astute commercial customers are looking for, including the fact that he is an ACE certified calving ease son of LBR Genesis. Phenotypically, he's got a powerful build with perfect, huge, feet. After using him exclusively last spring and fall, we are now offering semen for the first time.



LOT 188

189

RIVER CREEK FARMS

**SCHOOLEY HAGGARD A411H**

BD: 2/26/20 / ASA#: 3752744 / Tattoo: A411H / 1/2 SM 1/2 AN  
Semen / Homo Black / Homo Polled

G A R SURE FIRE

**EGL FIRESTEEL 103F**  
TJ 22X



G A R PROPHET

**SCHOOLEY MISS 3000A 823F**  
CCR MS SINGLETARY 3000A

CE	BW	WW	YW	MCE	Milk	MWW	Stay	Marb	BF	REA	API	TI
17.3	-2.1	91.4	142.0	8.2	28.5	73.6	16.9	1.24	0.001	0.69	201.4	114.7

**Selling 10 units of conventional semen. Stored at KABSU Manhattan, KS.**  
HAGGARD was our \$32,500 high selling selection in the 2021 Schooley Cattle Company Bull Sale. Three years later, we feel like that was a steal. Why? There is no better combination of phenotype and marbling in the breed. Look no further than his sons in this year's sale. Currently, HAGGARD ranks as the #8 \$TI EPD Sim-Angus bull in the Simmental database. Amongst active sires, he is also the 10th highest Marbling EPD. Not to mention he's a heifer bull with top 10% growth.



LOT 189



# SEMEN



**LOT 190**

**190**

RIVER CREEK FARMS

## KBHR REVOLUTION H071

BD: 3/21/20 / ASA#: 3789458 / Tattoo: H071 / PB SM  
Semen / Homo Black / Homo Polled

HHS MR ENTOURAGE 867B  
HHS MR 847D  
HHS MISS LUCKY AVA 847A



CLRS GRADE-A 875 A  
WS MISS SUGAR C4  
WS ANISE A71

CE	BW	WW	YW	MCE	Milk	MWW	Stay	Marb	BF	REA	API	TI
12.7	1.5	108.9	167.2	7.7	25.2	79.5	18.4	0.48	-0.056	1.21	169.8	106.6

*Selling 10 units of conventional semen. Stored at KABSU Manhattan, KS*  
REVOLUTION was our \$75,000 high selling selection in the 2021 Keller Broken Heart Ranch Bull Sale. As you can see by the mature photo we took this fall, he continues to showcase an awe-inspiring phenotype and a beautiful blaze face. Coupled with elite growth and carcass genetics that are now proven, we believe REVOLUTION has the potential to be a transcendent Simmental herd sire. His first daughters are coming into production this spring and we couldn't be more excited about the impact this sire will have on the next generation of River Creek genetics. Due to high demand, please reserve your semen for the spring breeding season as soon as possible.



**LOT 191**

**191**

RIVER CREEK FARMS

## KBHR HOMELANDER J071

BD: 3/19/21 / ASA#: 3943783 / Tattoo: J071 / 1/2 SM 1/2 AN  
Semen / Homo Black / Homo Polled

G A R ASHLAND  
G A R HOME TOWN  
CHAIR ROCK SURE FIRE 6095



KBHR HIGH ROAD E283  
KBHR MEDORA G132  
BAR CK MS X38 106Z

CE	BW	WW	YW	MCE	Milk	MWW	Stay	Marb	BF	REA	API	TI
16.4	-0.1	101.0	171.7	11.1	20.0	70.9	14.2	1.27	-0.042	1.15	197.2	118.2

*Selling 10 units of conventional semen. Stored at KABSU Manhattan, KS*  
HOMELANDER is currently the #2 active Sim-Angus herd sire in the database for \$TI, and #9 among all Sim-Angus bulls. He was our \$30,000 high selling selection in the 2022 Keller Broken Heart Ranch Bull Sale. HOMELANDER will feature prominently in our breeding program starting with his first calves for sale in 2025. Because of his extreme numbers and phenotype, we've been hesitant to offer semen for sale. We will be offering a limited release of semen this spring, available to ship now.



**LOT 192**

**192**

RIVER CREEK FARMS

## RVR ROGUE 530H

BD: 9/9/20 / ASA#: 3923371 / Tattoo: 530H / 5/8 SM 3/8 AN  
Semen / Homo Black / Homo Polled

HOOK`S BLACK HAWK 50B  
HOOK`S EAGLE 6E  
HOOK`S CRYSTAL 1C



W/C RAPID FIRE 2101C  
RC MISS RAPID FIRE 226F  
RC MISS TOP TEN 211C

CE	BW	WW	YW	MCE	Milk	MWW	Stay	Marb	BF	REA	API	TI
13.5	-2.5	84.7	131.8	4.8	26.7	68.9	16.6	0.48	-0.008	1.04	152.8	92.3

*Selling 10 units of conventional semen. Available sale day or shipped from KABSU Manhattan, KS or Nichols Cryo Genetics Maxwell, IA.*  
He is one of the best Eagle son's in the country. He is heifer safe, Homo Black and Homo Polled. He is an excellent choice if you want to make good Sim-Angus cattle with a white face.



**LOT 193**

**193**

HARD KNOX GROUP

## FFS JNR HARD KNOX H034

BD: 3/6/20 / ASA#: 3794725 / Tattoo: H034 / PB SM  
Semen / Red / Polled

W/C BANKROLL 811D  
W/C FORT KNOX 609F  
K-LER DOLLY`S QUEEN 609D



W/C EXECUTIVE ORDER 8543B  
HILB MISS VERSACE E57C  
AJE MS CHANEL Y32

CE	BW	WW	YW	MCE	Milk	MWW	Stay	Marb	BF	REA	API	TI
10.1	0.0	79.0	117.0	3.4	26.8	66.2	11.0	0.23	-0.027	1.02	127.2	83.2

*Lot 194A: Selling 10 units of conventional semen. Available sale day or can be shipped from Nichols Cryo Genetics or Trans Ova, IA.*  
*Lot 194B: Selling 5 units of sexed female semen. Available sale day or can be shipped from Nichols Cryo Genetics.*

If you want to make Red Baldies hes the best option on the market. He puts a white face on most of his calves and they are dark red and dang good. His calves are fancy but they also can handle the heat and fescue. His dam was a sale feature in the National Western. We are offering 10 units of conventioal semen and 5 units of heifer sexed semen. Call your orders in early and we can have more available to be picked up on sale day. We will have a new promo video featuring some of his calves from different breed combinations up soon on the RCS faceook and on rublecattleservices.com

**LOT 193A:** \_\_\_\_\_ **LOT 193B:** \_\_\_\_\_



194

**TJSC COPING WITH DESTINY 9K**

BD: 1/7/22 / ASA#: 4103854 / Tattoo: 9K / PB SM  
Semen / Black / Polled

HPF QUANTUM LEAP Z952  
WLE COPACETIC E02  
CMFM JOY 02ZB



MR HOC BROKER  
TJSC DIAMONDS DESTINY 134C  
KLS DIAMOND W516

CE	BW	WW	YW	MCE	Milk	MWW	Stay	Marb	BF	REA	API	TI
10.0	3.7	81.3	119.5	4.5	14.3	54.8	12.9	-0.09	-0.086	0.79	108.6	71.7

Selling ten packages of 2 units of conventional semen. Available sale day or can be shipped from Nichols Cryo Genetics.

He's the undisputed King of the Ring. If you want to make show cattle there is nothing better. As my daddy Marshall say "If you ain't first your last!" We bought this for customers so they can succeed and be able to purchase smaller amounts of semen to flush their best phenotype cows to make the front pasture kind. Don't disappoint your kids & grand kids. Remember, it's more fun when you win.

- LOT 194A: \_\_\_\_\_
- LOT 194B: \_\_\_\_\_
- LOT 194C: \_\_\_\_\_
- LOT 194D: \_\_\_\_\_
- LOT 194E: \_\_\_\_\_
- LOT 194F: \_\_\_\_\_
- LOT 194G: \_\_\_\_\_
- LOT 194H: \_\_\_\_\_
- LOT 194I: \_\_\_\_\_
- LOT 194J: \_\_\_\_\_



LOT 194

195

**NEXT LEVEL**

BD: 3/12/21 / ASA#: 3981484 / Tattoo: 4014J / PB SM  
Semen / Heterozygous Black / Homo Polled

RUBYS TURNPIKE 771E  
KRJ DAKOTA OUTLAW G974  
BRKC DAPHNE DY37



WLE BIG DEAL A617  
KRDL CAEDENCE C37  
KRDL FAE Y46

CE	BW	WW	YW	MCE	Milk	MWW	Stay	Marb	BF	REA	API	TI
9.6	4.5	91.8	136.3	4.0	20.7	66.5	12.2	-0.09	-0.111	1.28	110.8	78.6

Selling 4 units of conventional semen. Available sale day or can be shipped from Nichols Cryo Genetics. We are selling 4 units of flush quality semen in two packages of 2 units. This semen is hard to get. The show guys love the calves. Buy him to make stout and powerful purebred or Sim Angus calves.

- LOT 195A: \_\_\_\_\_
- LOT 195B: \_\_\_\_\_



LOT 195

201

**4E ELATION 8833**

BD: 3/25/23 / AAA#: 20890880 / Tattoo: 8833 / PB AN  
Bull / Black / Polled

S A V ELATION 7899  
JANSSEN ELATION 0030  
S A V ERICA 0894



LD CAPITALIST 316  
DEPPE BARBARA ANN 928  
DEPPE BARBARA ANN 7138

CED	BW	WW	YW	CEM	Milk	MW	Doc	Marb	RE	Fat	\$W	\$C
-1	+4.1	+78	+125	+9	+16	+74	+14	+55	+56	+0.25	+59	+258

Yearling Bull, SAV Elation son sire and Deppe Barbara Ann Dam, Deep Bodied Bull with very good EPDs and Great for cows.



S A V ELATION 7899 - PATERNAL GRANDSIRE OF LOT 201

202

**BALK EVERELDA 352**

BD: 2/28/22 / AAA#: 20501487 / Tattoo: 352 / PB AN  
Bred Heifer / Black / Polled

BALK COMRADE B17  
BALK COMRADE B480  
BALK BARBARA KARON 328



BALK PENDLETON B172  
BALK EVERELDA 129  
BALK EVERELDA 455

CED	BW	WW	YW	CEM	Milk	MW	Doc	Marb	RE	Fat	\$W	\$C
+4	+2.9	+55	+97	+11	+22	+53					+43	

AI'd to Koch Angus Maverick 1111 (ASA# 20890880) on 12/16/23. Confirmed safe to AI date. Sire is a Balk Comrade B480 and Dam is Balk Everelda 129 safe AI bred to a Poss Maverick Son, Deep Calm Heifer sure to upgrade any herd

203

**4EBLACKCAP QB 3388**

BD: 9/19/22 / AAA#: 20919860 / Tattoo: 3388 / PB AN  
Bred Heifer / Black / Polled

S A V QUARTERBACK 7933  
TRI-K QB KAUTION H10  
2 K'S LADY KAGA Y23



SYDGEN 5420 DESTINATION 3771  
SCA BLACKCAP EMPRESS C117  
MEAD BLACKCAP EMPRESS J778

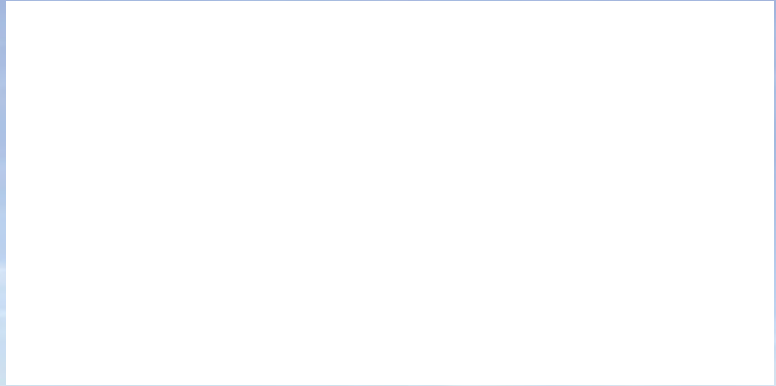
CED	BW	WW	YW	CEM	Milk	MW	Doc	Marb	RE	Fat	\$W	\$C
+0	+3.5	+77	+133	+7	+35	+88	+11	-.10	+1.02	-.021	+72	+233

AI'd to Koch Angus Maverick 1111 (ASA# 20192939) on 12/16/23. Confirmed safe to AI date. Sav QB son sire and a SCA Blackcap Empress C117 Dam, Dam is a pathfinder, Deep long bodied heifer sure to serve you well for many years. Due Date is 9-24-24 AI Bred to a Poss Maverick Son





**RUBLE CATTLE SERVICES**  
1525 140th Street  
Corydon, IA 50060



# **RUBLE CATTLE SERVICES**

# *Spring Turnout*

**SATURDAY, MAY 25, 2024 • BLOOMFIELD, IA**

**1:00 PM CST • BLOOMFIELD LIVESTOCK MARKET**

**300 HEAD OF SIMMENTAL, SIMANGUS, ANGUS & RED ANGUS CATTLE**

**150 HEAD FROM THE MCLAIN LINK CATTLE CO. HERD DISPERSAL**

**SPRING COW-CALF PAIRS, FALL BRED COWS, OPEN HEIFERS,  
COMMERCIAL FEMALES, BULLS & FROZEN GENETICS**